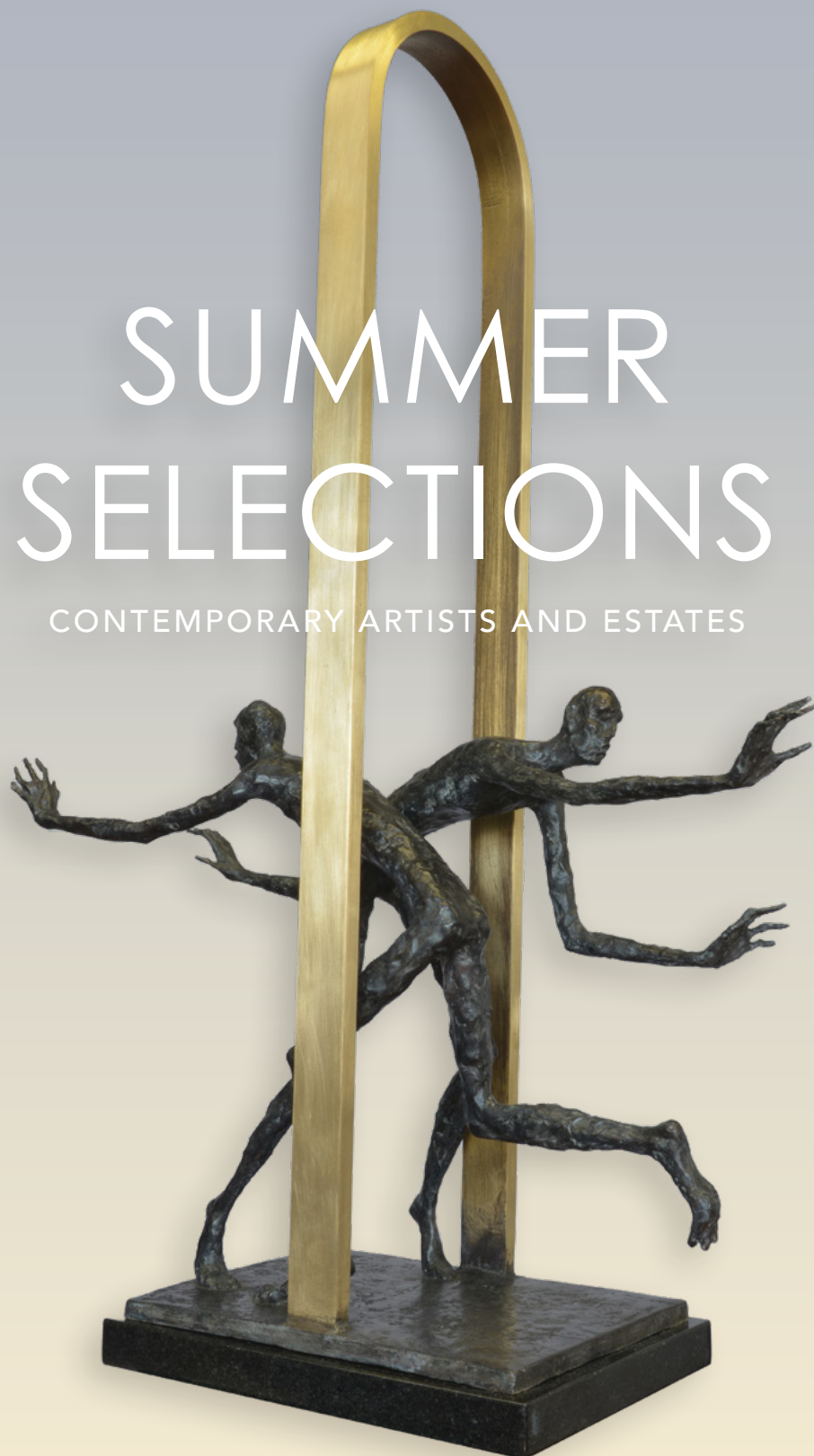


FINDLAY GALLERIES

---

# SUMMER SELECTIONS

CONTEMPORARY ARTISTS AND ESTATES





# SUMMER SELECTIONS

CONTEMPORARY ARTISTS AND ESTATES

Findlay Galleries is pleased to present this year's highly anticipated first installment of Summer Selections, an exhibition of works from our stable of artist estates and contemporary artists, displaying a wide breadth of paintings in various formats and styles.

From en plein air artist Isabelle de Ganay's vibrant colors and rhythmic brushstrokes to Ward Jackson's carefully composed hard-edge paintings, the variety presented within this exhibition provides our collectors the perfect opportunity to explore new ideas and accomplish new visions for their homes. We invite you to enjoy these works and explore the entire exhibition in person at our Palm Beach location or online on our website.

## ARTISTS INCLUDED IN EXHIBITION

Frank Lobdell	Charles Neal
Chuang Che	Ward Jackson
Mary Sipp Green	Isabelle de Ganay
Leonard Nelson	Dimitry Gerrman

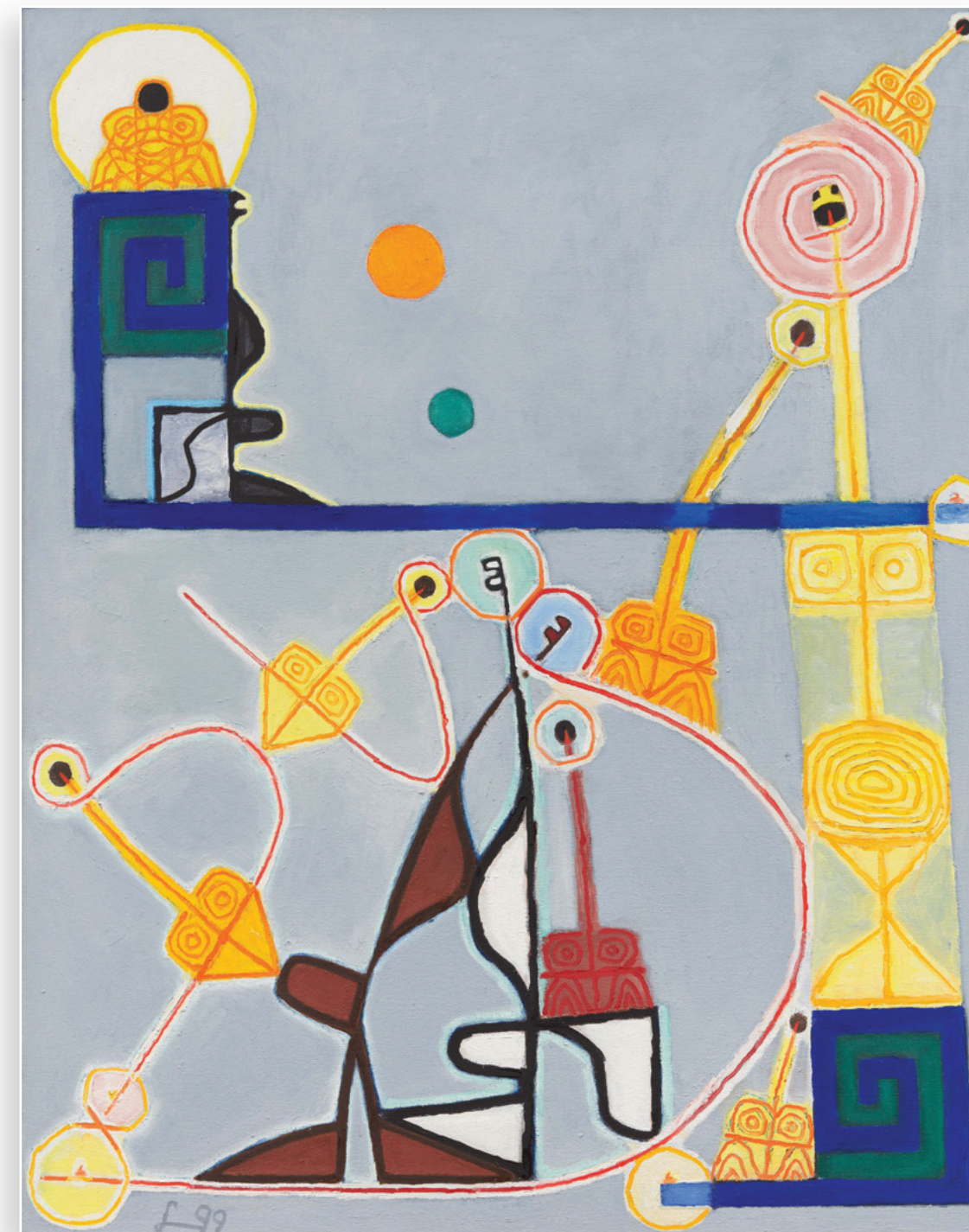
165 WORTH AVENUE, PALM BEACH, FL 33480 • (561) 655-2090  
32 EAST 57<sup>TH</sup> STREET, 2<sup>ND</sup> FLOOR, NEW YORK, NY 10022 • (212) 421-5390  
[WWW.FINDLAYGALLERIES.COM](http://WWW.FINDLAYGALLERIES.COM)

# Dimitry Gerrman

SUMMER SELECTIONS | PALM BEACH 2022

# Frank Lobdell

(sculpture on cover)  
**Dimitry Gerrman** | *The Golden Gate*  
 bronze on granite base  
 35 x 24 x 9 in.  
 FG© 136609



**Frank Lobdell** (1921-2013) | *Pier 70*, 11.25.99 | oil on canvas  
 57 x 45 in. | FG© 138724





**Dimitry Gerrman** constantly searches for self-expression in his art by exploring variations of themes and compositions and experimenting with the plasticity of form and rhythm. Gerrman's works can be found in numerous museums worldwide, including The State Russian Museum in St. Petersburg, which he values with great honor as a Russian-born artist. We, too, feel honored to represent Gerrman exclusively in America since 2003.

**Dimitry Gerrman** | *Apple Picker*  
bronze on granite base  
54 x 20 x 11 in.  
FG© 136710



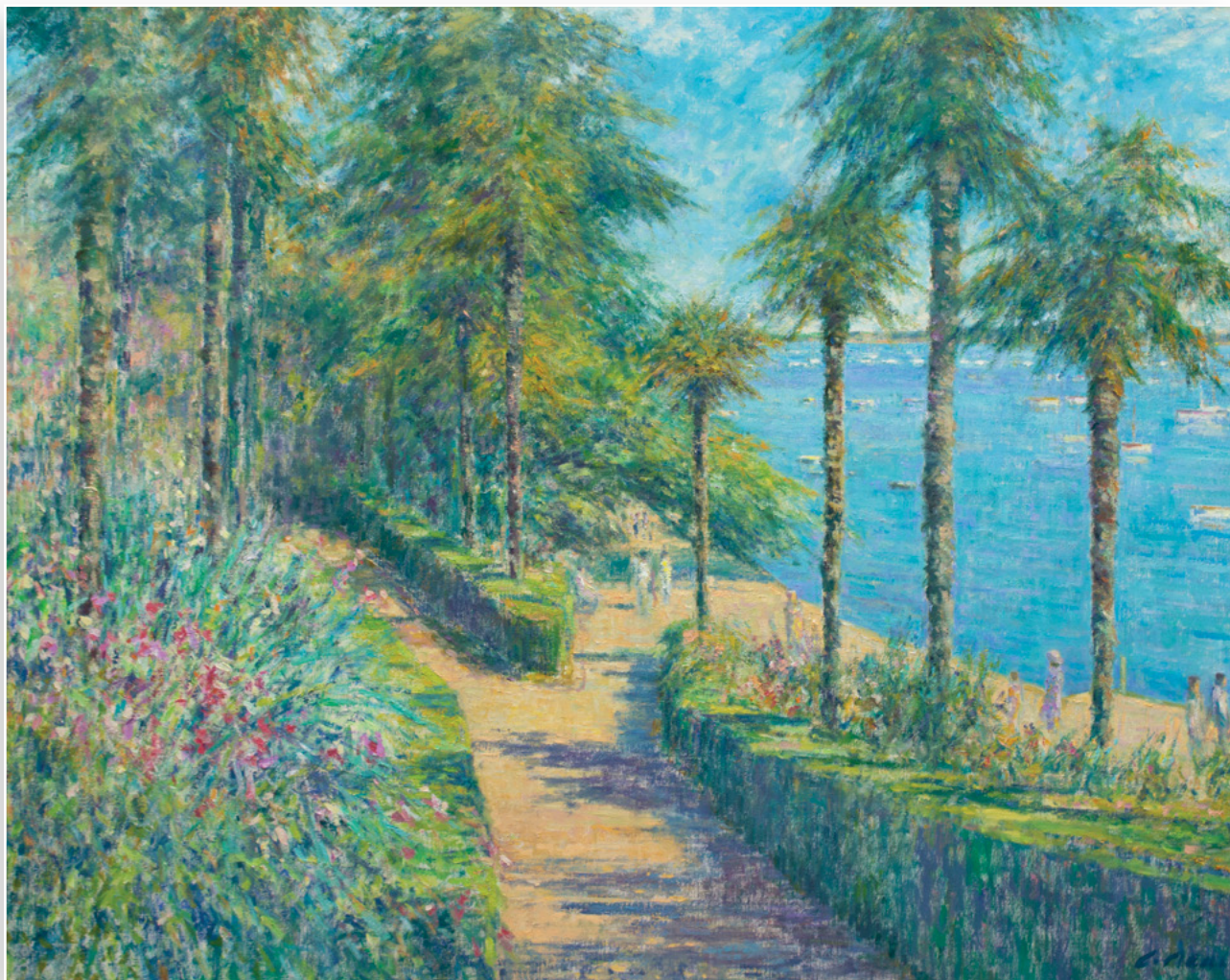
**Frank Lobdell** (1921-2013) | *Pier 70*, 11.9.98 | oil on canvas  
35 1/8 x 30 in. | FG© 138722

# Charles Neal

SUMMER SELECTIONS | PALM BEACH 2022

# Chuang Che





Charles Neal | *The Palm Gardens, Dinard, Bretagne* | oil on canvas  
48 x 60 in. | FG© 138417



Chuang Che | *No. 77, 1980* | oil and acrylic on canvas  
50 1/2 x 42 1/4 in. | FG© 139930

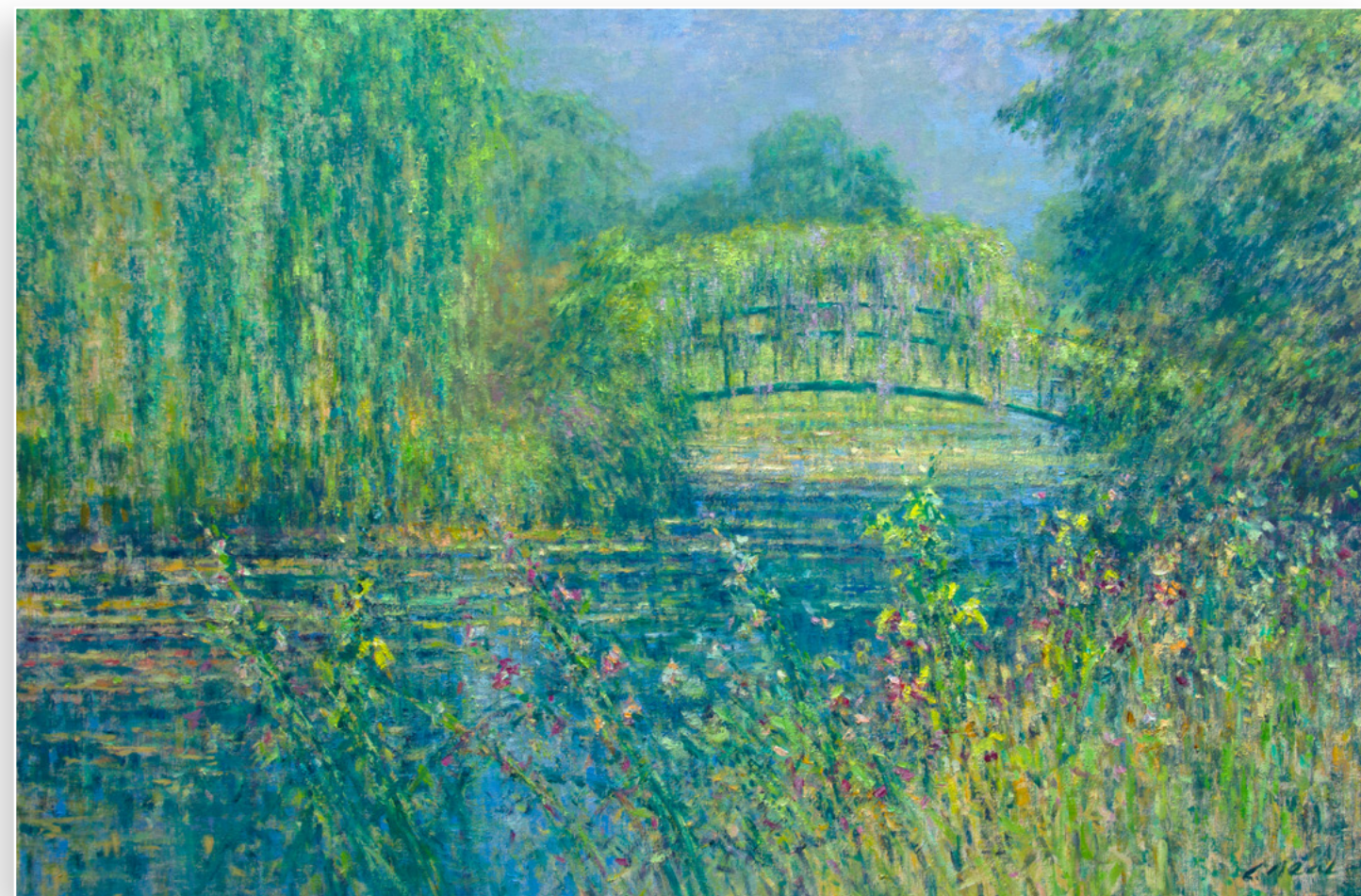
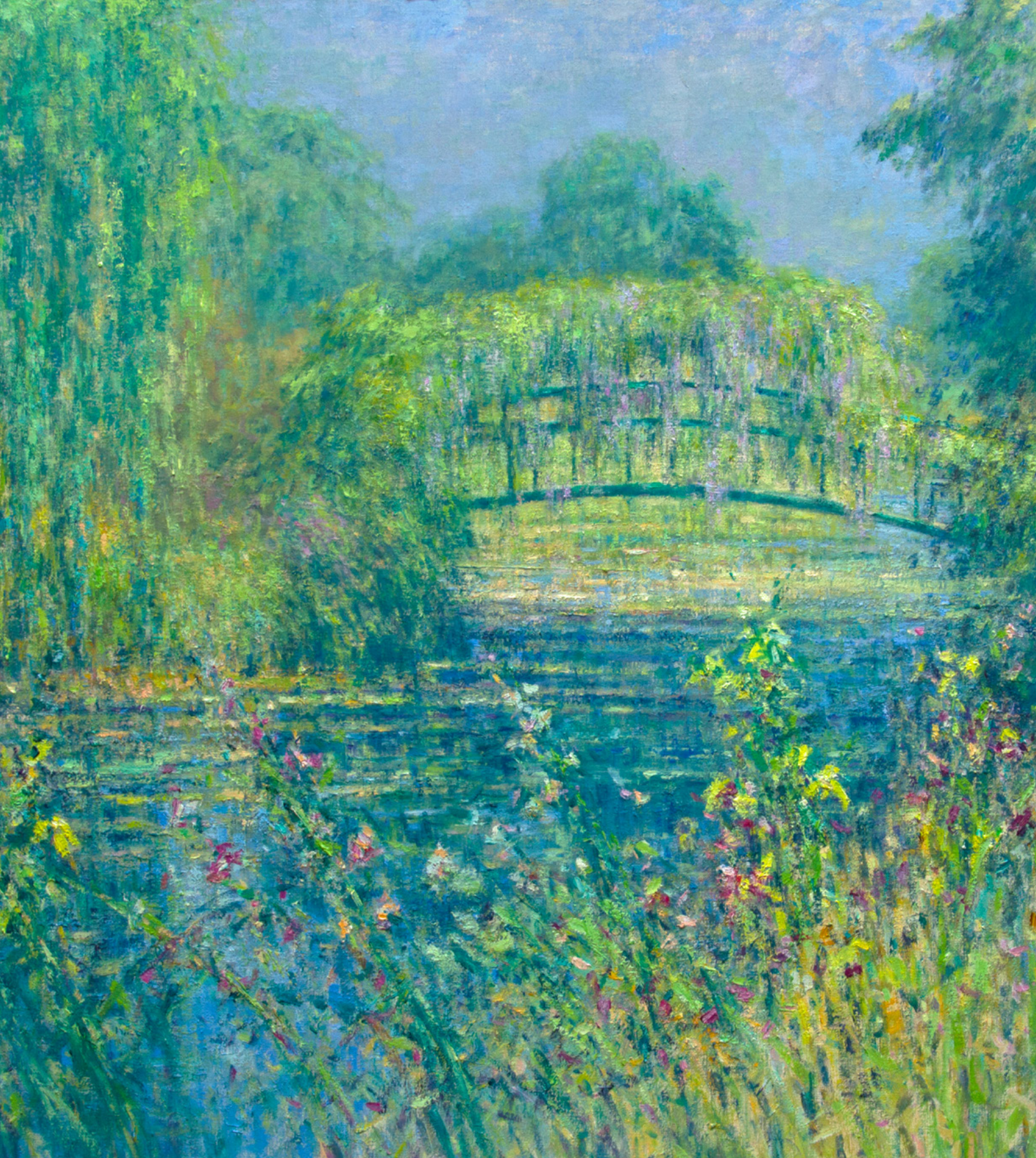




Chuang Che | *Untitled*, 1972 | oil & acrylic on canvas  
 25 1/8 x 39 7/8 in. | FG© 140527

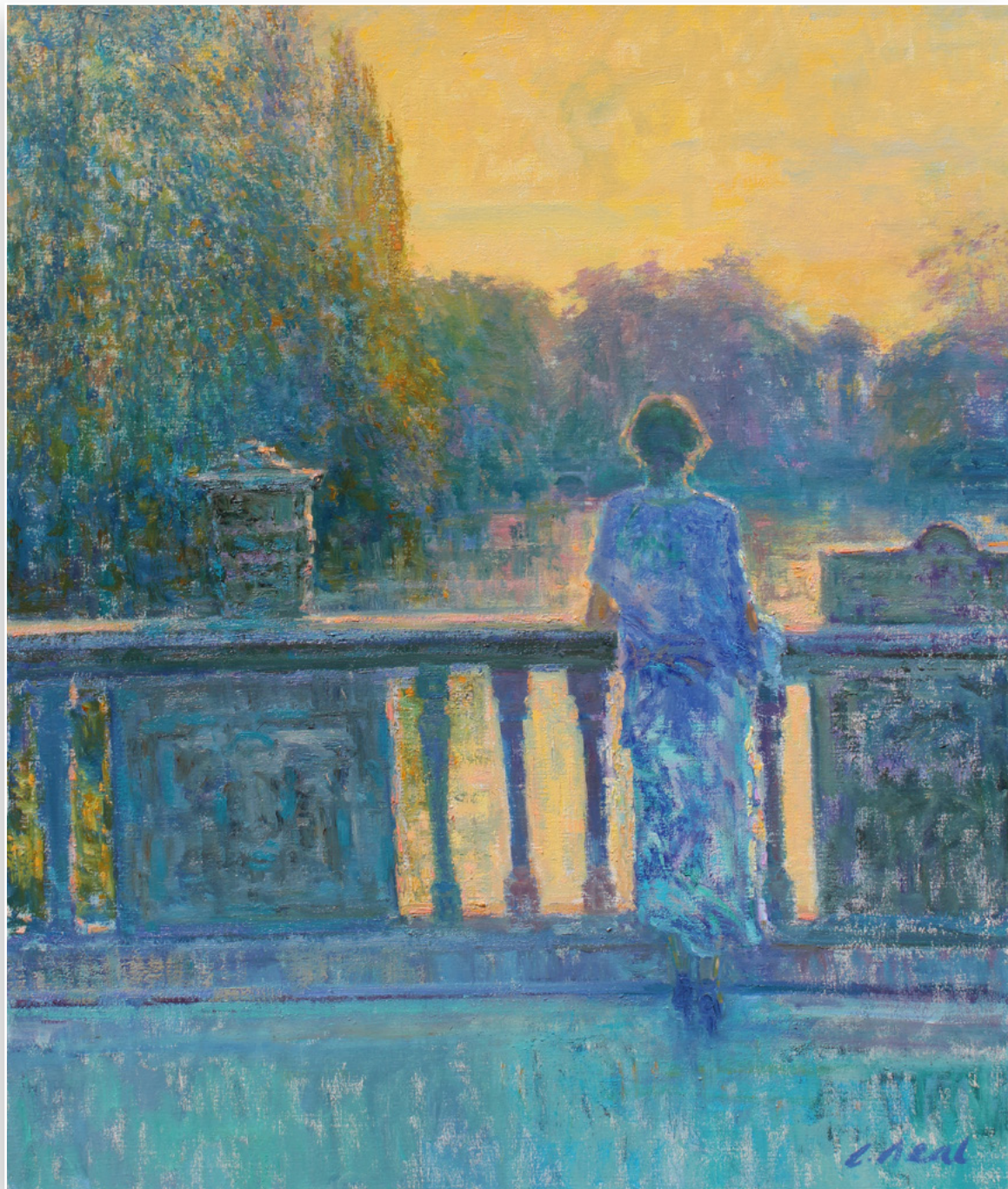






**Charles Neal** | *The Lower Lily Pond, Highnam Court*, 2017 | oil on canvas  
40 x 60 in. | FG© 138416



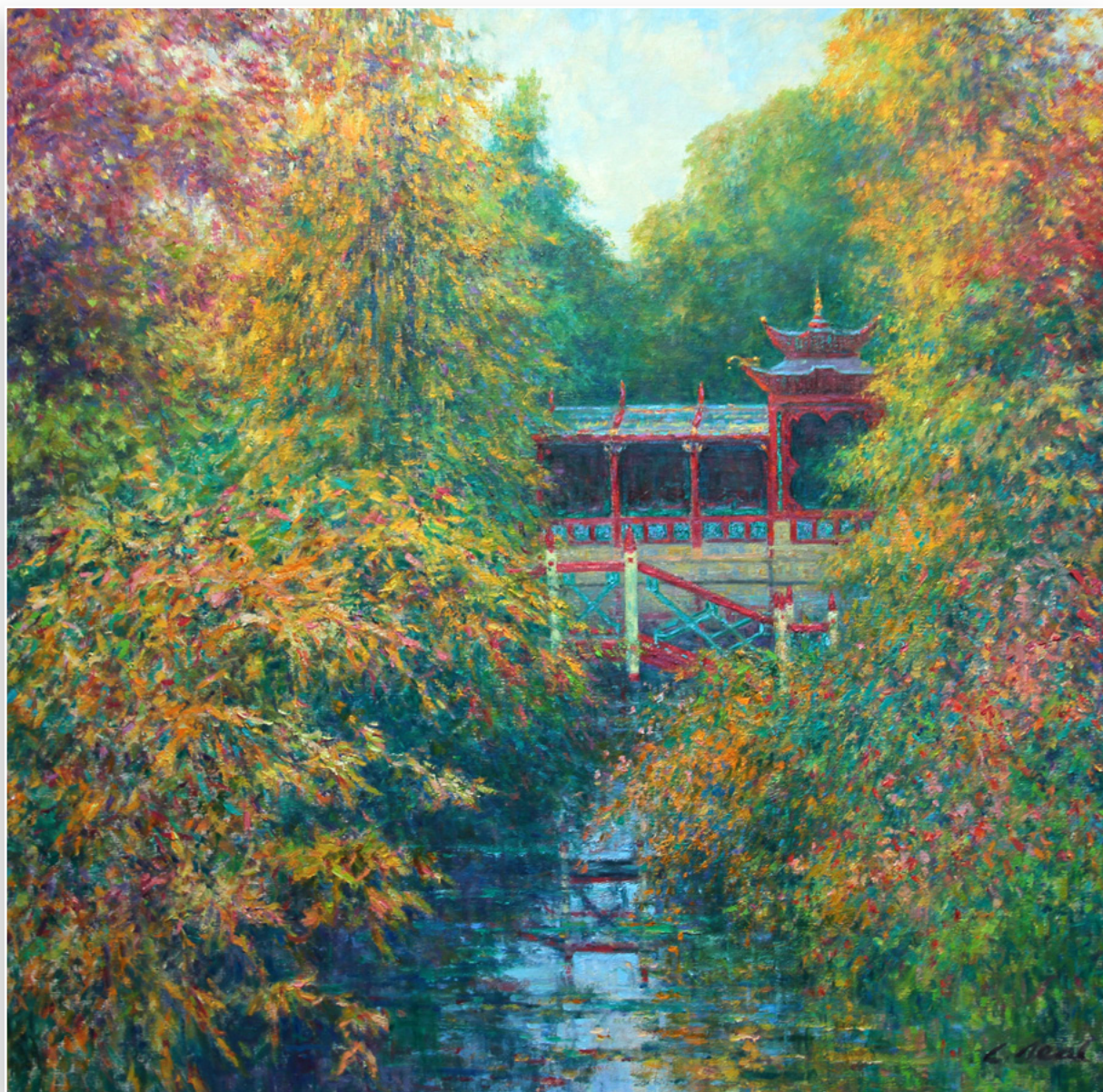


**Charles Neal** | *Before the Concert, Pitville Park* | oil on canvas  
36 1/4 x 30 1/4 in. | FG© 135366



**Chuang Che** | *Untitled, 1989* | acrylic & oil on canvas  
59 x 50 in. | FG© 138537





**Charles Neal** | *The China Garden, Morning Light View to the Temple, Biddulph Grange*, 2019  
oil on canvas | 60 X 60 in. | FG© 139369



**Chuang Che** | *No. 106*, 1977 | oil & acrylic on canvas  
50 x 40 7/8 in. | FG© 139931



# Mary Sipp Green

SUMMER SELECTIONS | PALM BEACH 2022

# Ward Jackson





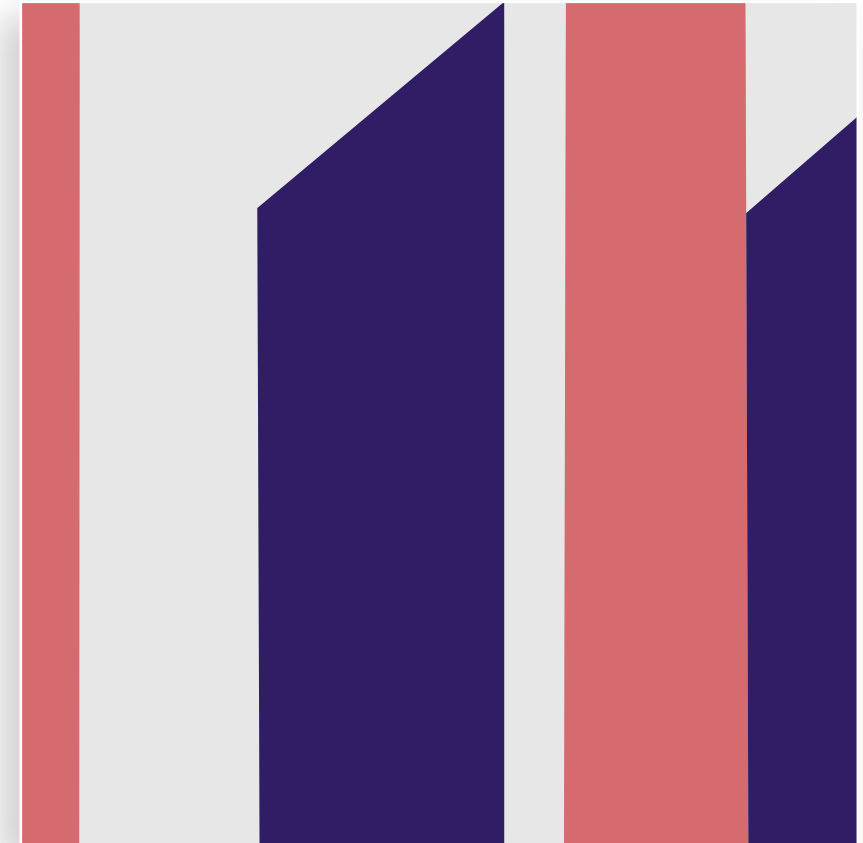
**Mary Sipp Green** | *Sandy Paths at North Point* | oil on linen  
34 x 38 in. | FG© 139544



**Ward Jackson** (1928-2004) | *Virginia River Series-Morattico, c. 1970*  
acrylic on linen | 36 x 36 in. | FG© 137334



**Mary Sipp Green** | *Rosy Twilight in Stockbridge* | oil on linen  
30 x 36 in. | FG© 138399



**Ward Jackson** (1928-2004) | *Chords, Manhattan, 1972-76*  
acrylic on canvas | 36 x 36 in. | FG© 137348





**Mary Sipp Green** | *Goldenrod at Sunset* | oil on linen  
34 x 48 in. | FG© 134636



**Ward Jackson** (1928-2004) | *Virginia River Series - Mattapony*  
acrylic on linen | 36 x 36 in. | FG© 137335

# Isabelle de Ganay

SUMMER SELECTIONS | PALM BEACH 2022

# Leonard Nelson

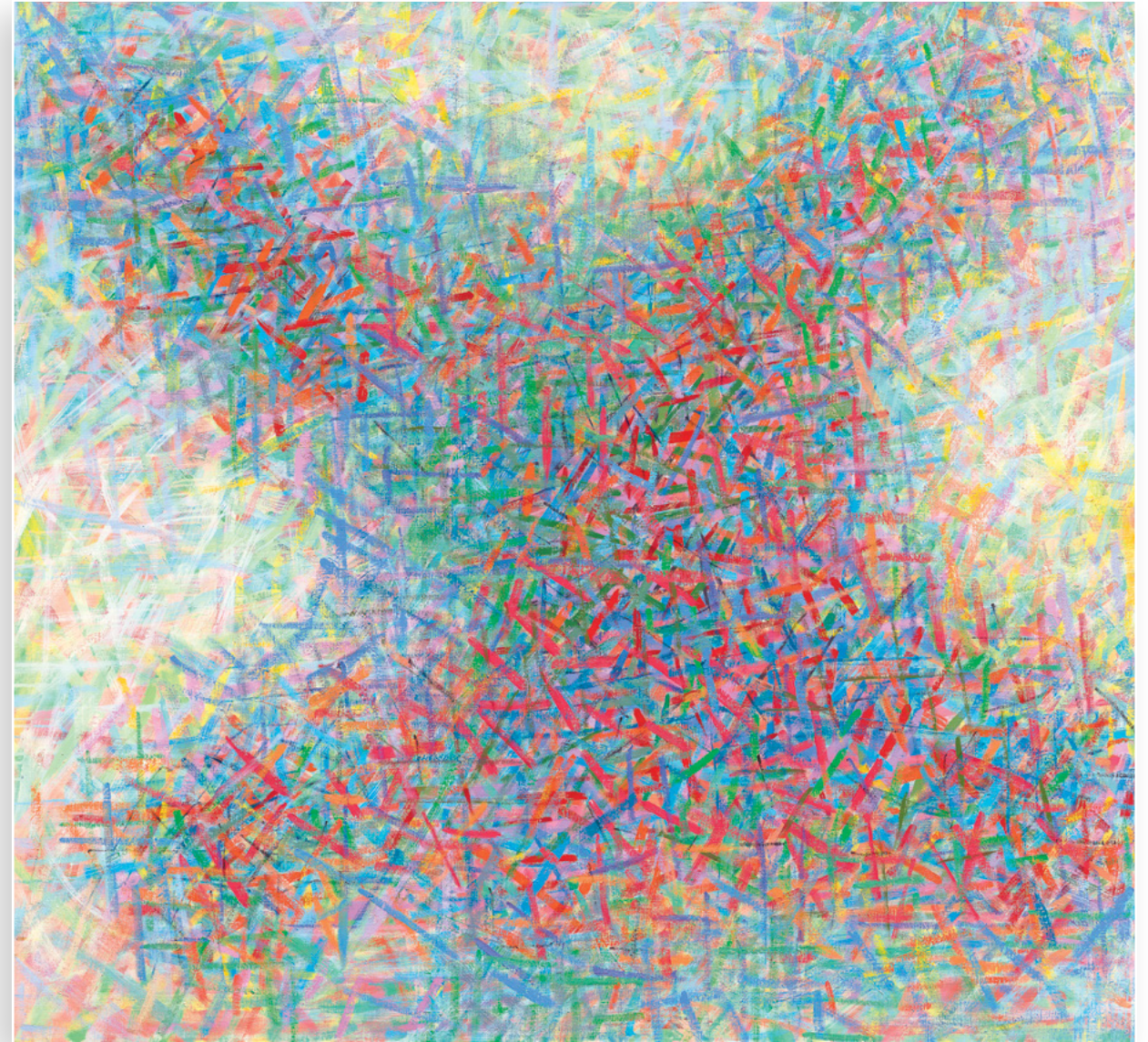








**Isabelle de Ganay** | *Symphonie de Roses* | oil on canvas  
39 3/8 x 31 7/8 in. | FG© 139255

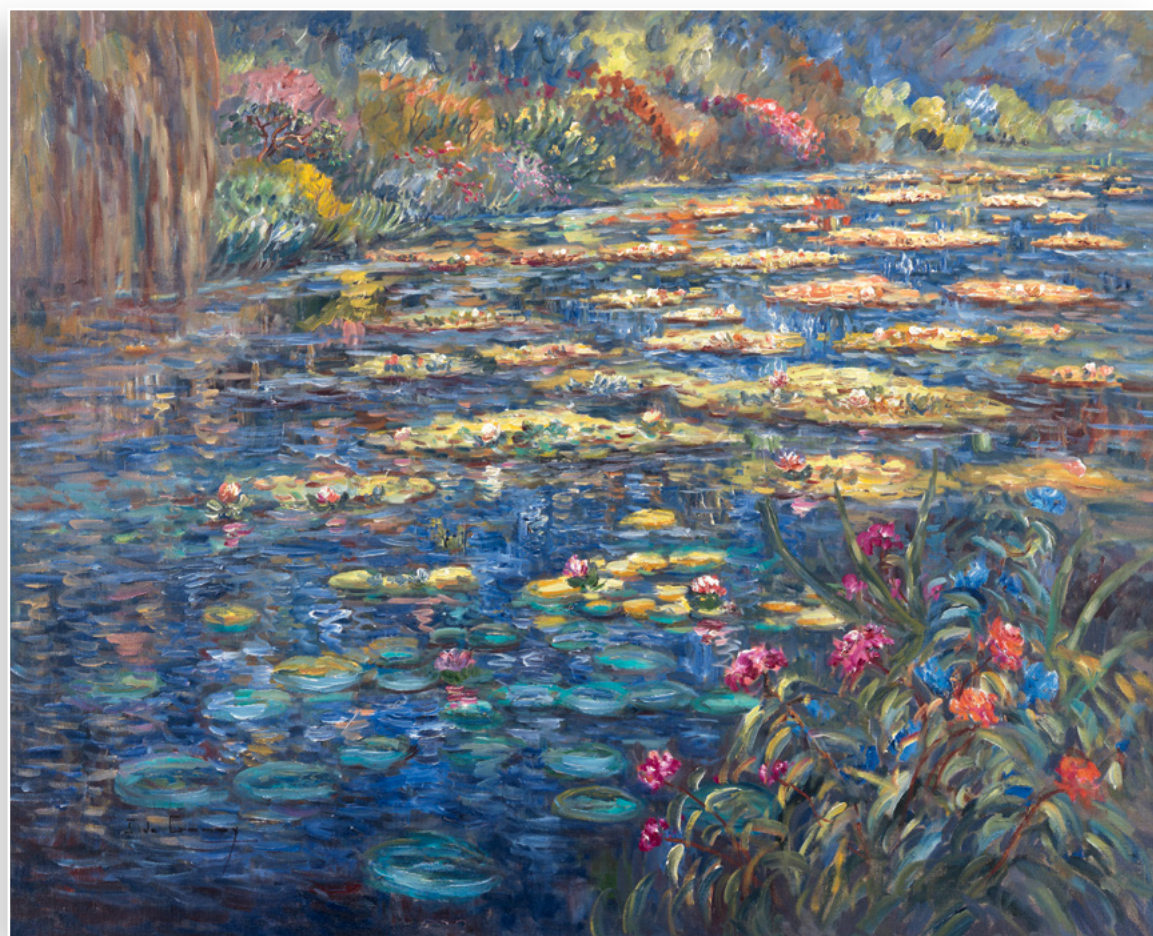


**Leonard Nelson** (1912-1993) | *Color Abstraction*, 1990-92  
oil and acrylic on canvas | 50 x 54 in. | FG© 135425









**Isabelle de Ganay** | *Nymphaeas a Giverny* | oil on canvas  
31 7/8 x 39 3/8 in. | FG© 137008



**Leonard Nelson** (1912-1993) | *#11 Bryn Mawr, 1987-88* | oil & acrylic on canvas  
50 x 46 in. | FG© 133428

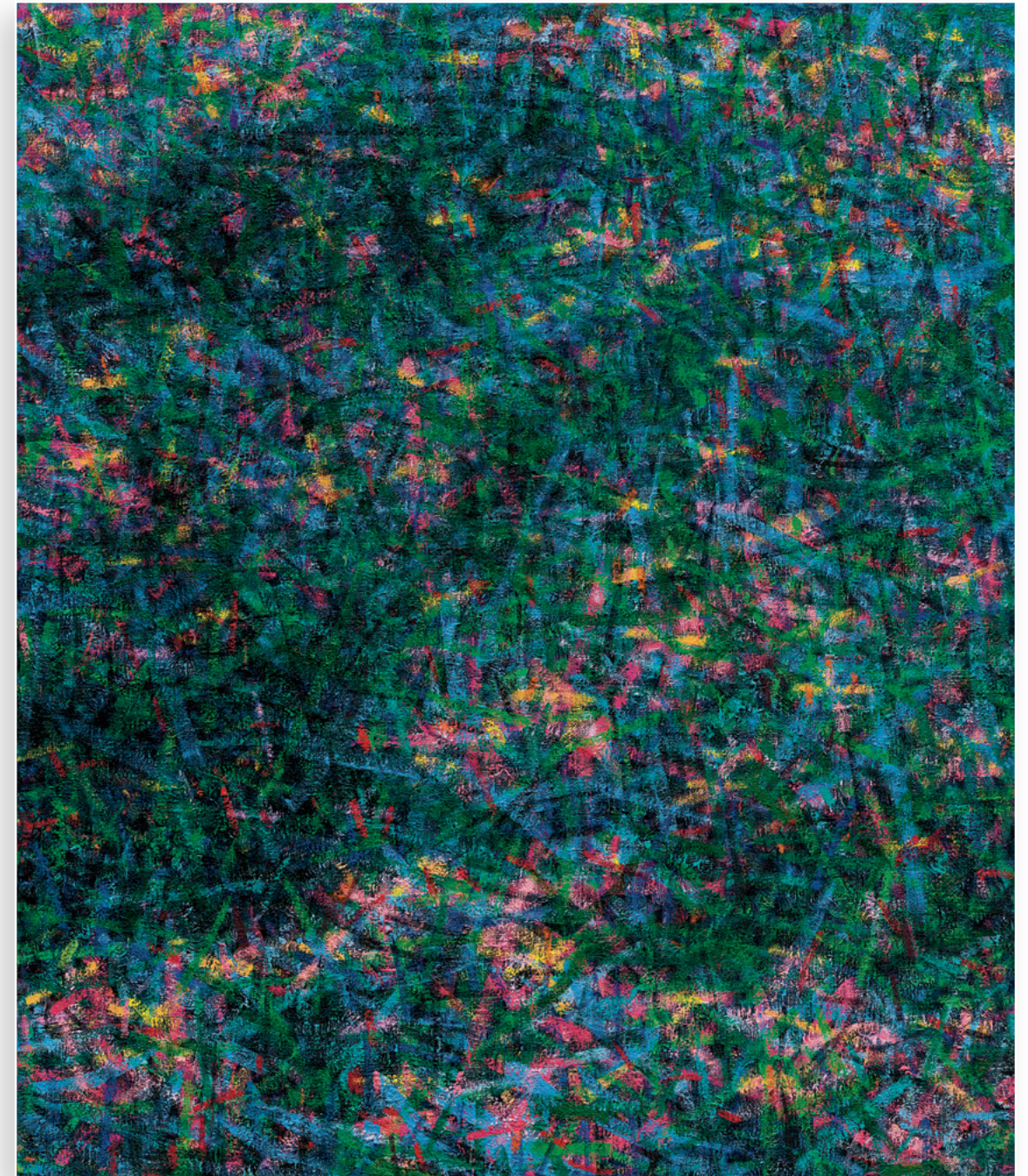








**Isabelle de Ganay** | *Pont de Claude Monet* | oil on canvas  
39 3/8 x 31 7/8 in. | FG© 137836



**Leonard Nelson (1912-1993)** | *#14 Sasha's Run #2*, 1986-87 | oil & acrylic on canvas  
60 x 50 in. | FG© 133424





# FINDLAY GALLERIES

T H R E E   C E N T U R I E S   I N   A R T

Contact our galleries for inquiries, acquisitions and consignments.

## **Palm Beach**

165 Worth Avenue  
Palm Beach, FL 33480  
(561) 655-2090  
[palmbeach@findlayart.com](mailto:palmbeach@findlayart.com)

## **New York**

32 E 57th St, 2nd Floor  
New York, NY 10022  
(212) 421-5390  
[newyork@findlayart.com](mailto:newyork@findlayart.com)

WWW.FINDLAYGALLERIES.COM