



FINDLAY GALLERIES

THREE CENTURIES IN ART

Approaching Modernity

From Impressionism to Early Modernism

Approaching Modernity

On View at Findlay Galleries is a special presentation of late nineteenth and early twentieth century masterworks by Georges Braque, Childe Hassam, Albert Lebourg, Henri Matisse and others. The selection displayed demonstrates various artistic explorations of landscape and human form through a dynamic interplay of labor and leisure.

These artists' works... offer a wide gamut of immediate expressions of modern life, and stem from a selection of an unwavering artistic exploration of form. The second half of the nineteenth century became notorious for the historical rejection by avant-garde artists of the secular and time-honored academic traditions.

– Joachim Pissarro, *Modern Drawing: Work & Play*, 2019

EXHIBITION INCLUDES

Georges Braque Kees van Dongen

Jean Dufy Othon Friesz

William J. Glackens Childe Hassam

Albert Lebourg André Lhote

Jean Metzinger Henri Matisse

Robert Antoine Pinchon Pierre Eugène Montezin

Camille Pissarro Maurice Prendergast

Maurice de Vlaminck Edouard Vuillard



Pierre Eugene Montezin (1874 - 1946)

Peniches a Saint-Mammes

oil on canvas

23 5/8 x 28 3/4 in.

FG© 139353





Edouard Vuillard (1868 - 1940)

Quatre Personnages sur un Banc, 1902

oil on cardboard

18 1/2 x 17 3/8 in.

FG© 125831



Provenance

Estate of the artist

Monsieur J. Salomon, Paris

Jacques Salomon, Paris

Private Collection, Paris

Private Collection, New York

Notes

To be included in the Vuillard catalogue raisonné being prepared by Antoine Salomon.



Provenance

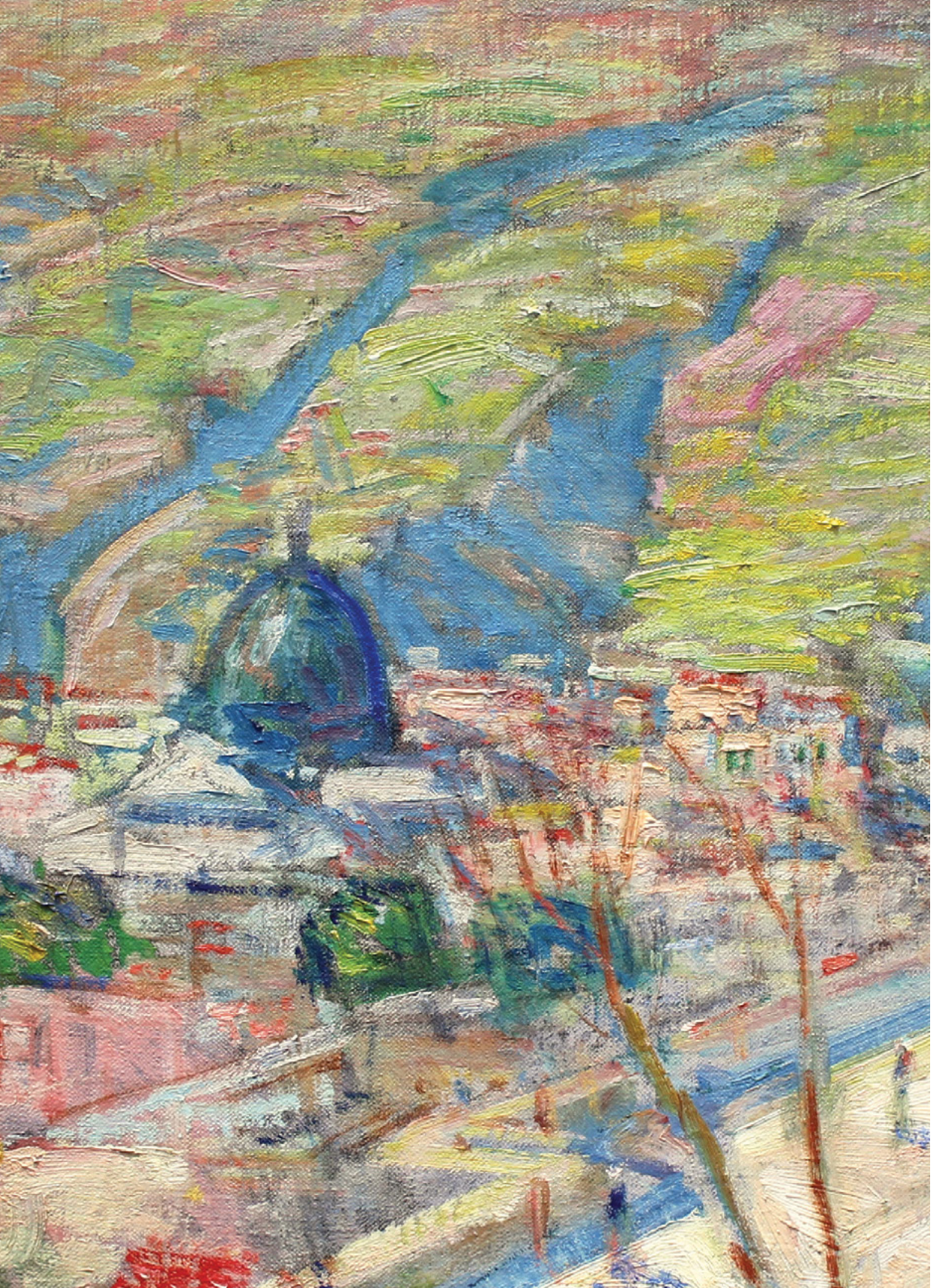
Collection of Fernand Lambert
Private Collection, France
Wally Findlay Galleries International, Inc.

Albert Lebourg (1849 - 1928)

La Rochelle, 1905

oil on canvas
19 5/8 x 28 3/4 in.
FG© 138230





Provenance

Mr. John Fox
Hirschl & Adler Galleries, Inc., New York
Private collection, New York
Ira Spanierman, New York
Private collection, Brownsville, Texas
Christie's, New York, December 2, 1988, lot 235a
Acquired by the present owner from the above
Wally Findlay Galleries International, Inc.

Childe Hassam (1859 - 1935)

Bridge at Posillipo, Naples, 1897

oil on canvas

25 x 30 in.

FG© 131700

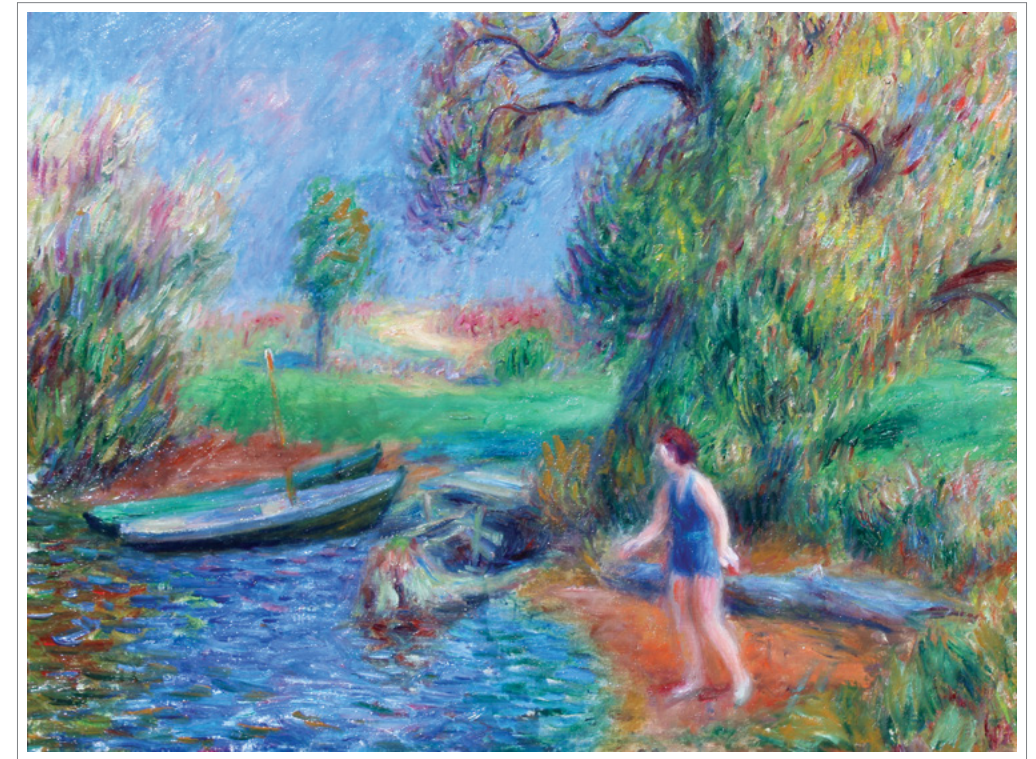
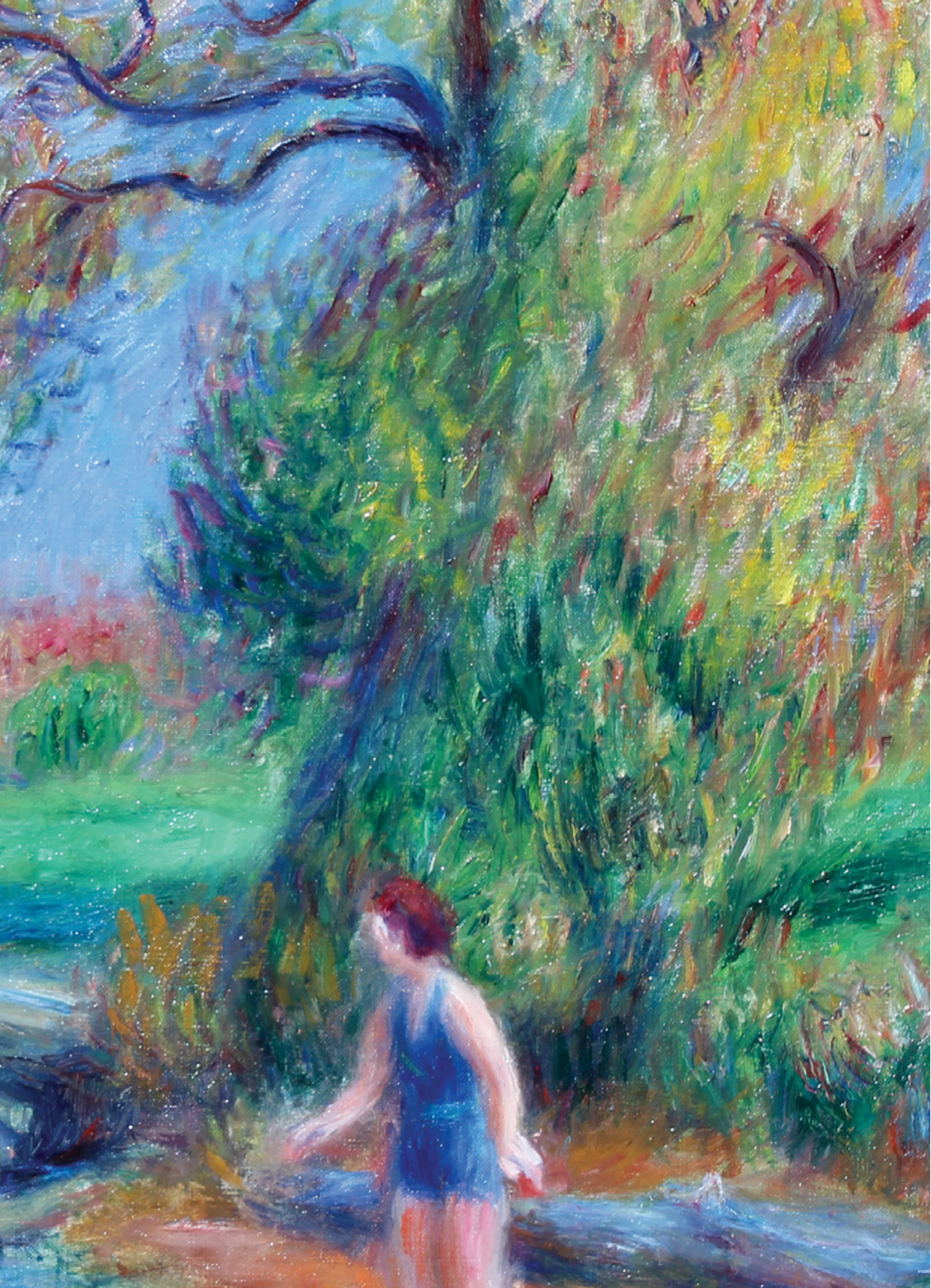
Exhibited

New York, Armory of the 69th Regiment, Armory Show,
February-May 1913, no. 75
New York, Durand-Ruel Gallery, 1926, no. 9
Utica, New York, Munson-Williams-Proctor Institute, 1913 Armory
Show--50th Anniversary Exhibition, February-April 1963, no. 75
New York, Hirschl & Adler Galleries, Inc., Childe Hassam, 1964, no. 4



Notes

This painting will be included in Stuart P. Feld's and Kathleen M. Burnside's forthcoming catalogue raisonné of the artist's work.



Provenance

Kraushaar Galleries, New York
 Collection of Mrs. J. Russell Parsons
 Private Collection, 1965
 The Altman Collection (sold: Sotheby Parke Bernet,
 New York, December 6, 1984, lot 179, illustrated in color)
 Acquired by the present owner at the above sale
 Wally Findlay Galleries International, Inc.

William J. Glackens (1870 - 1938)

Bather in Blue

oil on canvas
 18 x 24 in.
 FG© 131701



Exhibited

Cornell Fine Arts Museum, Rollins College, Winter Park, Florida,
 The Independents: The Ashcan School and Their Circle from Florida Collections,
 March-May 1996, no. 20, p. 45, illustrated in color
 Nassau County Museum of Art, Roslyn Harbor, NY,
 18 November 2007 - 03 February 2008



Provenance

Pierre Matisse, New York (by descent from the artist)
 Property from the Estate of Pierre-Noël Matisse
 By descent from the above to the late owner.
 Wally Findlay Galleries International, Inc.

Henri Matisse (1869 - 1954)

Henriette sur les roches à Antibes, 1922

oil on canvas
 15 x 18 1/8 in.
 FG© 132736

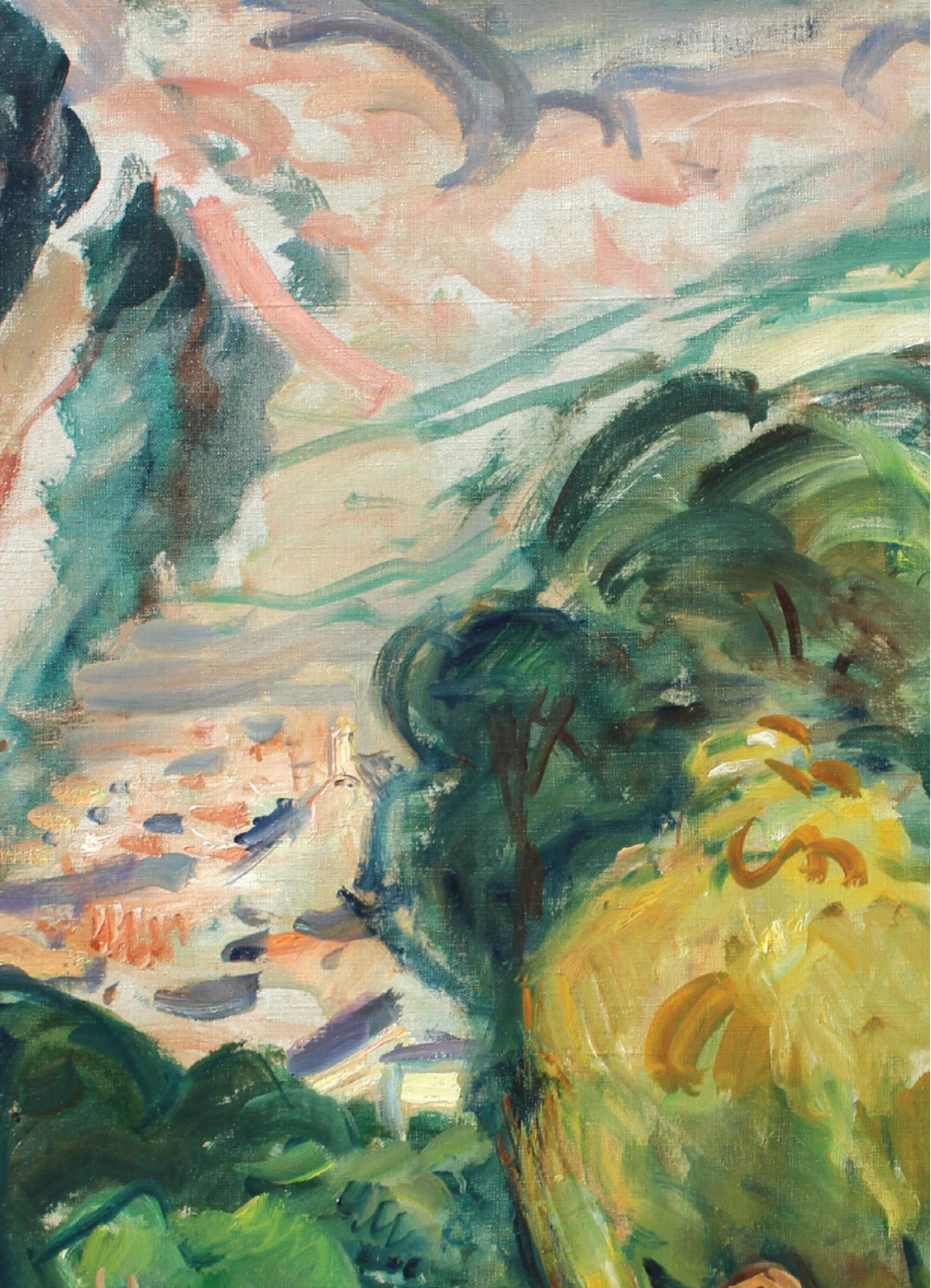


Exhibited

Tokyo National Museum, Tokyo, Henri Matisse, 1951,
 Yomiuri Shimbum No. 46 reproduced in the catalogue plate 53,
 with title given as Jeune fille en manteau carreaux assise sur des rochers

Notes

Wanda de Guébriant has confirmed the authenticity of this painting,
 No. PV104 of the artists archives



Achille Émile Othon Friesz (1870 - 1938)

Provenance

Galerie Petrides, Paris
 J. Budcche, Paris
 Galerie Belle Cour, Paris
 Private Collection, London
 Private Collection, New York
 Wally Findlay Galleries International, Inc.

Exhibited

Musée de Rouen, France, Paysage de France, 1958
 Nassau County Museum of Art, New York, Picasso and the School of
 Paris, November, 2006 – February, 2007

Literature

Robert Martin & Odile Aittouares, Emile Othon Friesz, L'Oeuvre
 Peint, Paris, Vol I, illustrated p. 200 No. 541

Après-midi d'été, 1935
 oil on canvas
 28 3/4 x 23 5/8 in.
 FG© 133913





Georges Braque (1882 - 1963)

Vase de feuilles, 1942

oil and gouache over pencil on paper laid on canvas
18 3/4 x 25 1/8 in.
FG© 132734

Provenance

Galerie Louise Leiris, Paris

Galeria Theo, Madrid

Anon. sale, Christie's, New York, 10 May 2001, lot 451

Acquired at the above sale by the present owner

Exhibitions

Sara Hilden Art Museum, Tampere, Finland, Classics of Modern Art
November - December 1985, p. 64-65 (illustrated)

Isetan Museum of Art; Fukuoka Art Museum; Shizuoka Prefectural Museum of Art
and Yokohama, Sogo Museum of Art, Tokyo, Georges Braque, July - December
1988, p. 113-114, no. 27 (illustrated)

Notes

Quentin Laurens has certified authenticity.





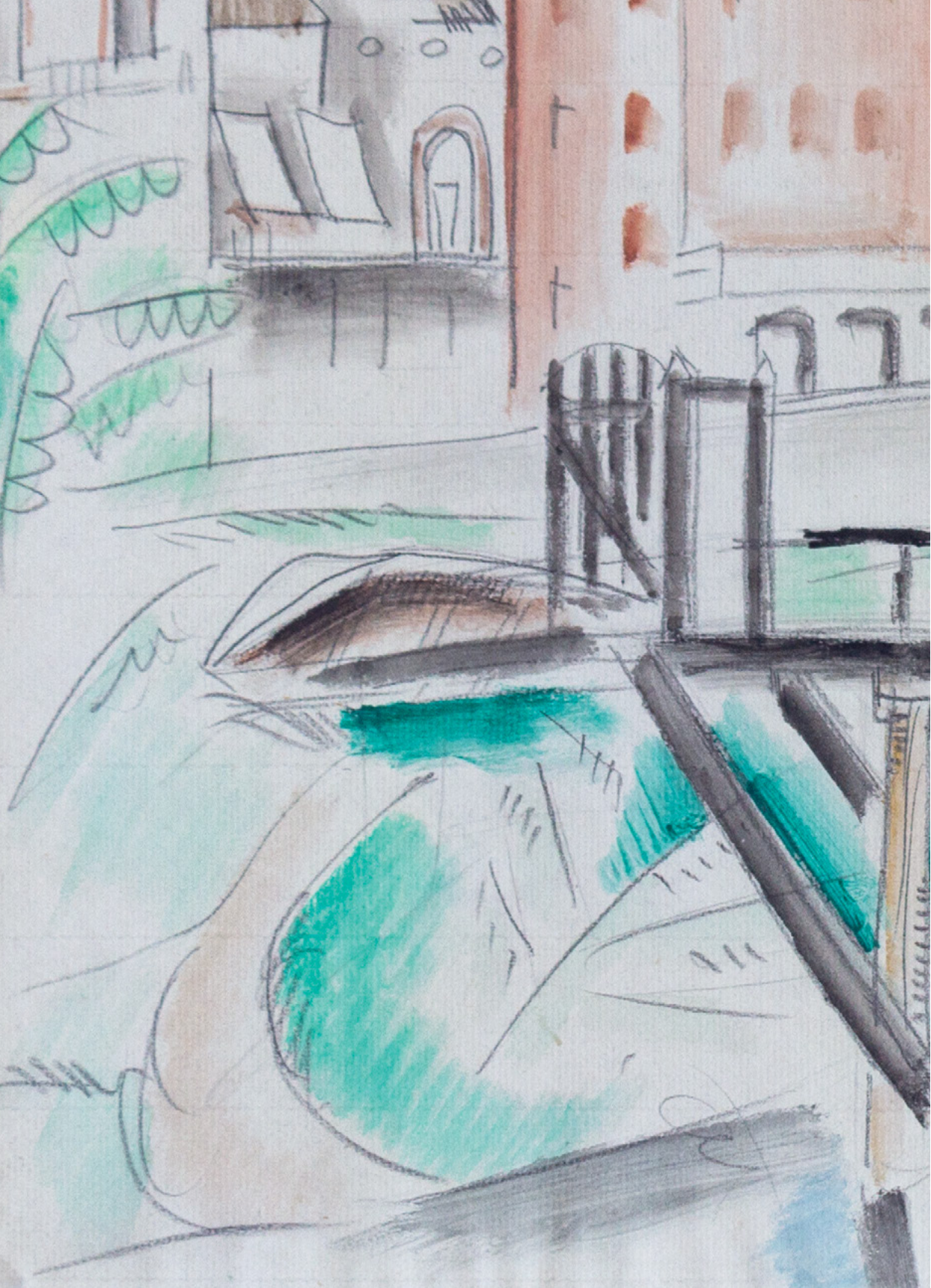
Jean Dufy (1888 - 1964)

Landscape
oil on canvas
22 x 18 in.
FG© 136327



Notes

Jacques Bailly Certificate of Authenticity



Andre Lhote (1885 - 1962)

Passant sur le pont

watercolor

12 9/16 x 19 5/8 in.

FG© 136097





Jean Metzinger (1883 - 1956)

Parc Montsouris, Paris, 1906 - 1907

oil on canvas

21 x 29 in.

FG© 134194



Provenance

Private Collection, Paris

Private Collection, Boston

Private Collection, Palm Beach

Wally Findlay Galleries International, Inc.



CELEBRATING 58 YEARS IN NEW YORK

Established in 1870, Findlay Galleries celebrates 152 years in the art business. A family business founded in 1870 now representing over 100 artists and artist estates, with gallery locations in Palm Beach and New York. Specializing in Impressionism, European Modernism, l'Ecole de Rouen, l'Ecole de Paris, and 20th Century American Art, with exclusive representation of Contemporary artists and artist estates.



FINDLAY GALLERIES

T H R E E C E N T U R I E S I N A R T

Please contact our galleries for inquiries, acquisitions and consignments

New York

(212) 421-5390

newyork@findlayart.com

32 East 57th Street, 2nd Floor

New York, New York 10022

Palm Beach

(561) 655-2090

palmbeach@findlayart.com

165 Worth Avenue

Palm Beach, Florida 33480

W W W . F I N D L A Y G A L L E R I E S . C O M