

FINDLAY GALLERIES



beltran bobell

MEDITERRANEAN FIGURES



FINDLAY GALLERIES

BELTRÁN BOFILL

M E D I T E R R A N E A N F I G U R E S

(1934 - 2009)

Oil on Canvas





Born in Badalona, a town North of Barcelona in 1934. Joan Beltrán Bofill was a true passionate Catalan. The Mediterranean sea was one of his first and long-lasting loves; in fact, the Mediterranean inspired him to paint, which eventually became his career. Bofill was a Spanish post-war Luminist, the finest of his generation. He was first introduced into the Findlay Galleries stable of artists in 1978 and has been a valued member of Findlay Galleries ever since.

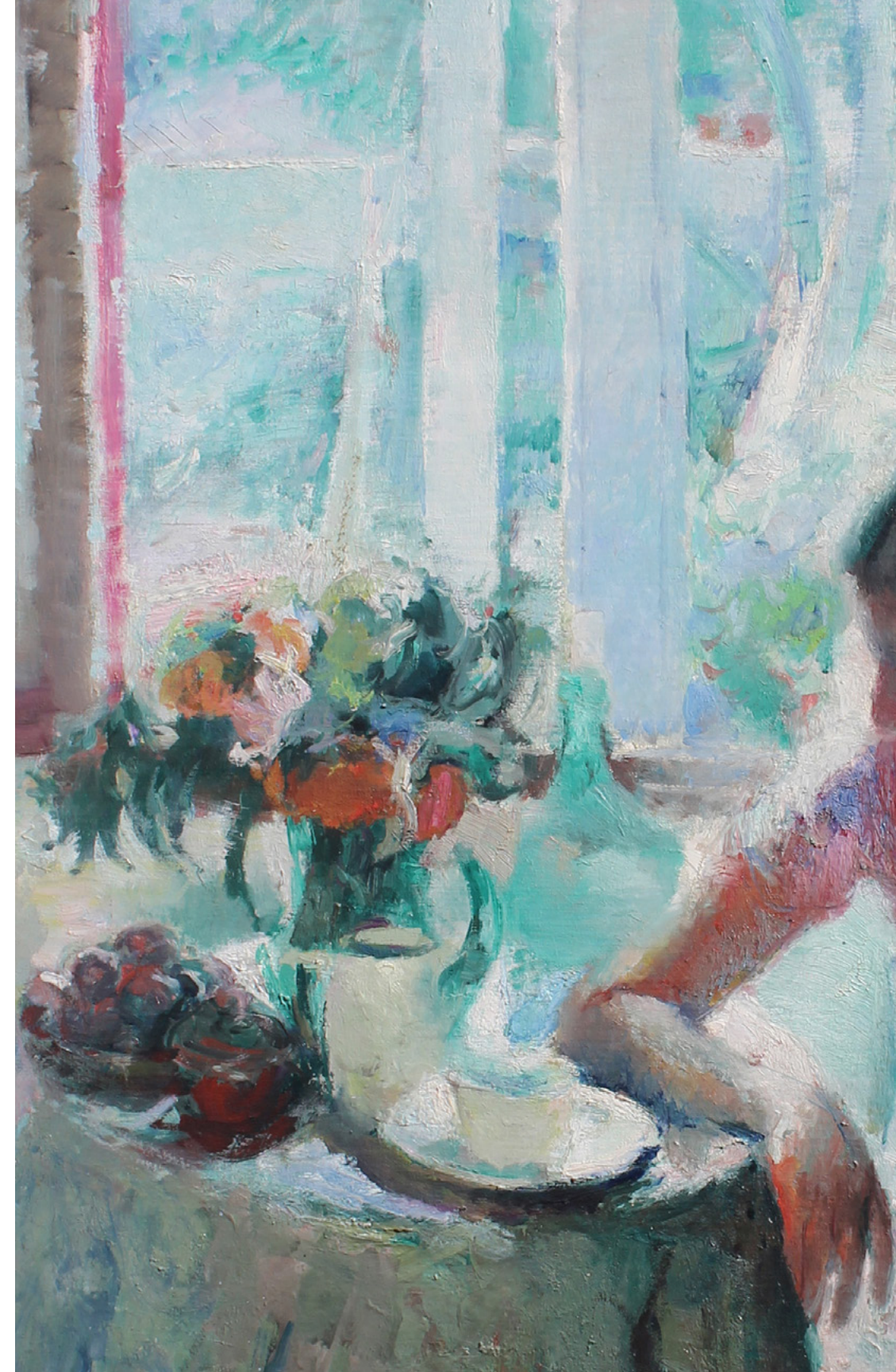
Tres figuras y flores | oil on canvas | 57 1/2 x 44 7/8 in. | FG© 138272





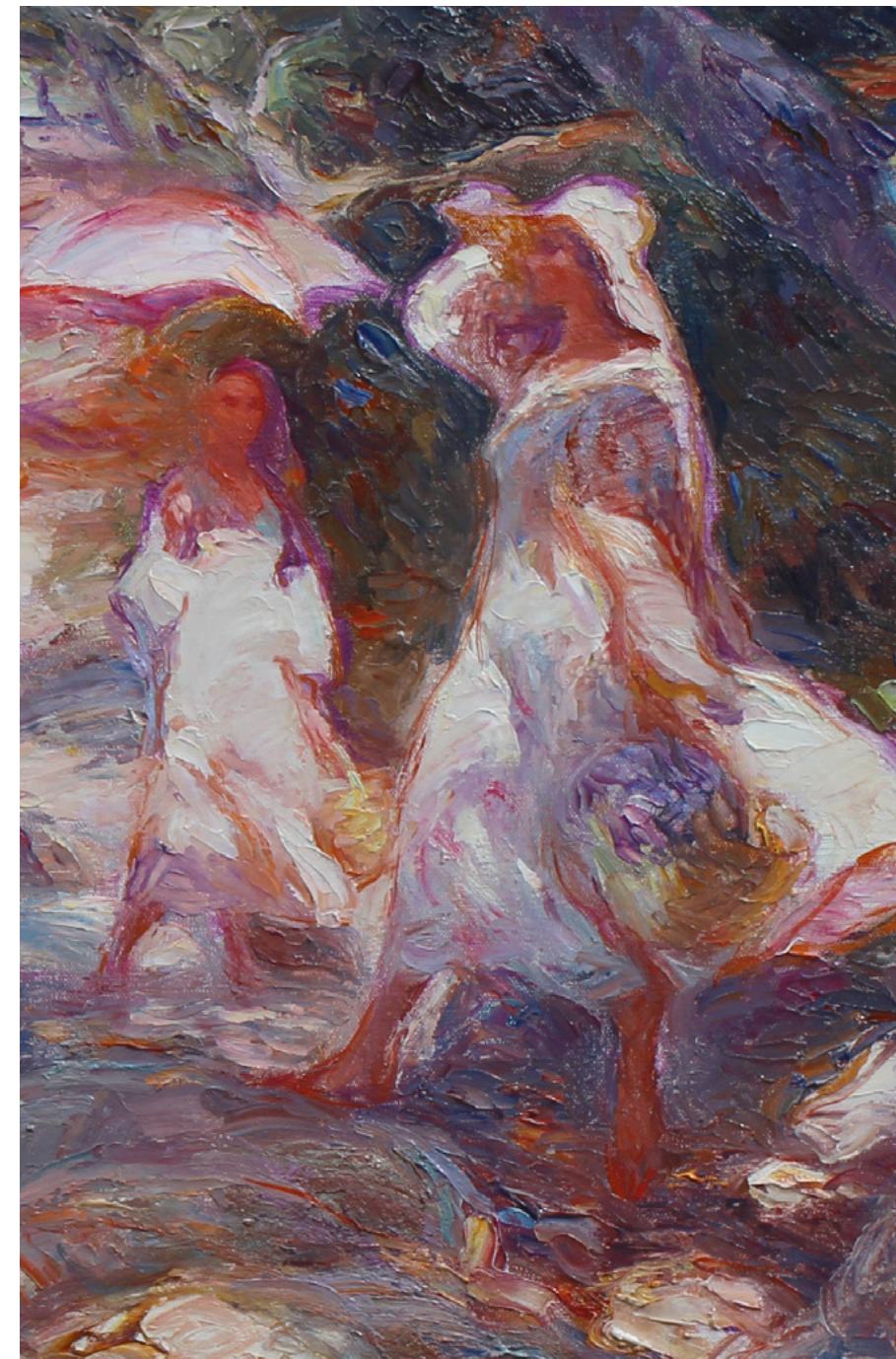



Bofill studied at both the Escuela Superior de Artes de San Jordi and the Oficio Casa Lonja, which educated Picasso and various fellow Catalan School Artists. He met the great Catalan painter Hermenegildo Anglada Camarasa during his military service in Majorca. It was an important meeting as both Anglada Camarasa, and the undulating Majorcan landscape would greatly influence Bofill's work for decades to come.





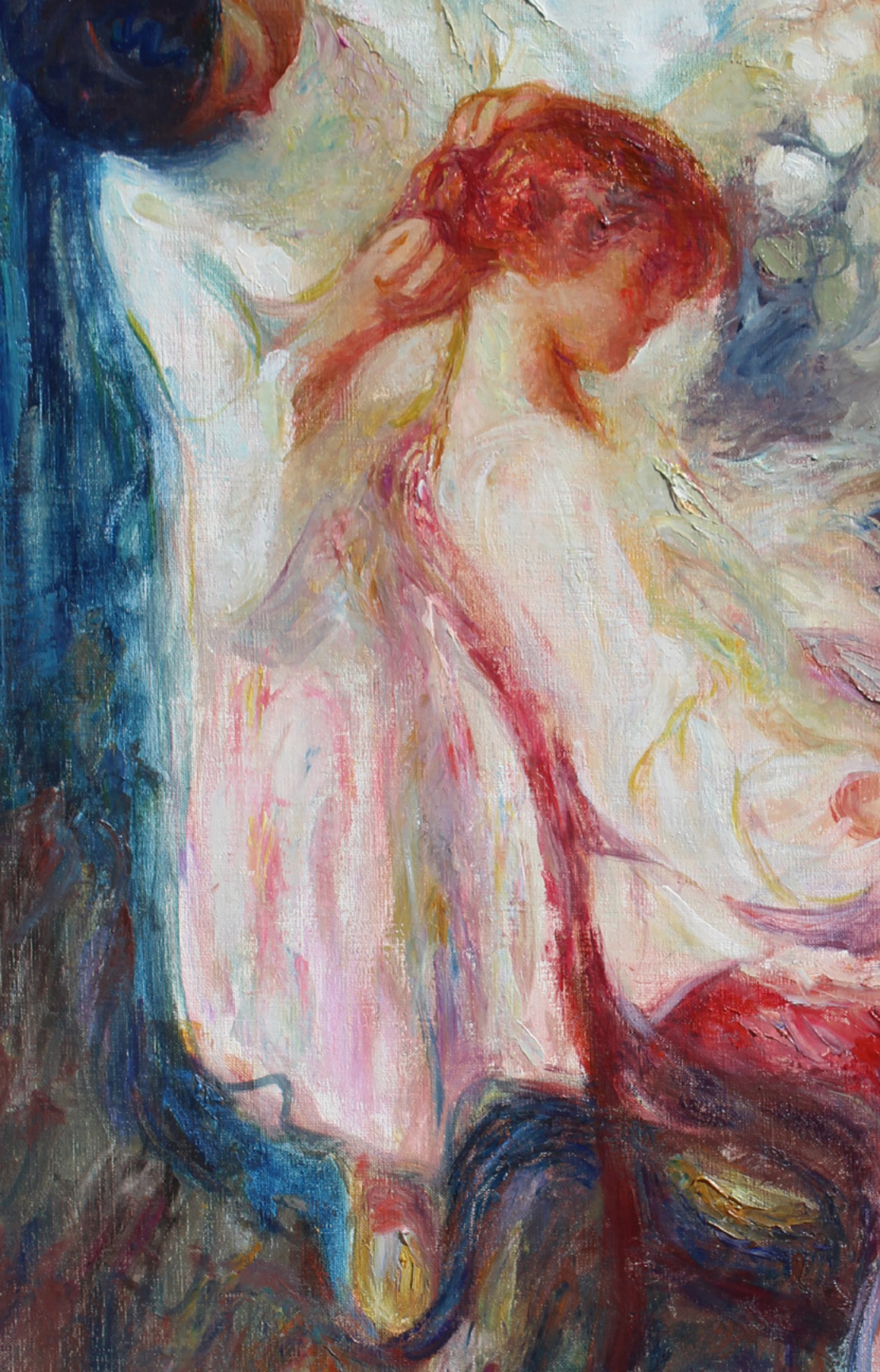
Luz Blanca | oil on canvas | 39 3/8 x 31 7/8 in. | FG© 134959



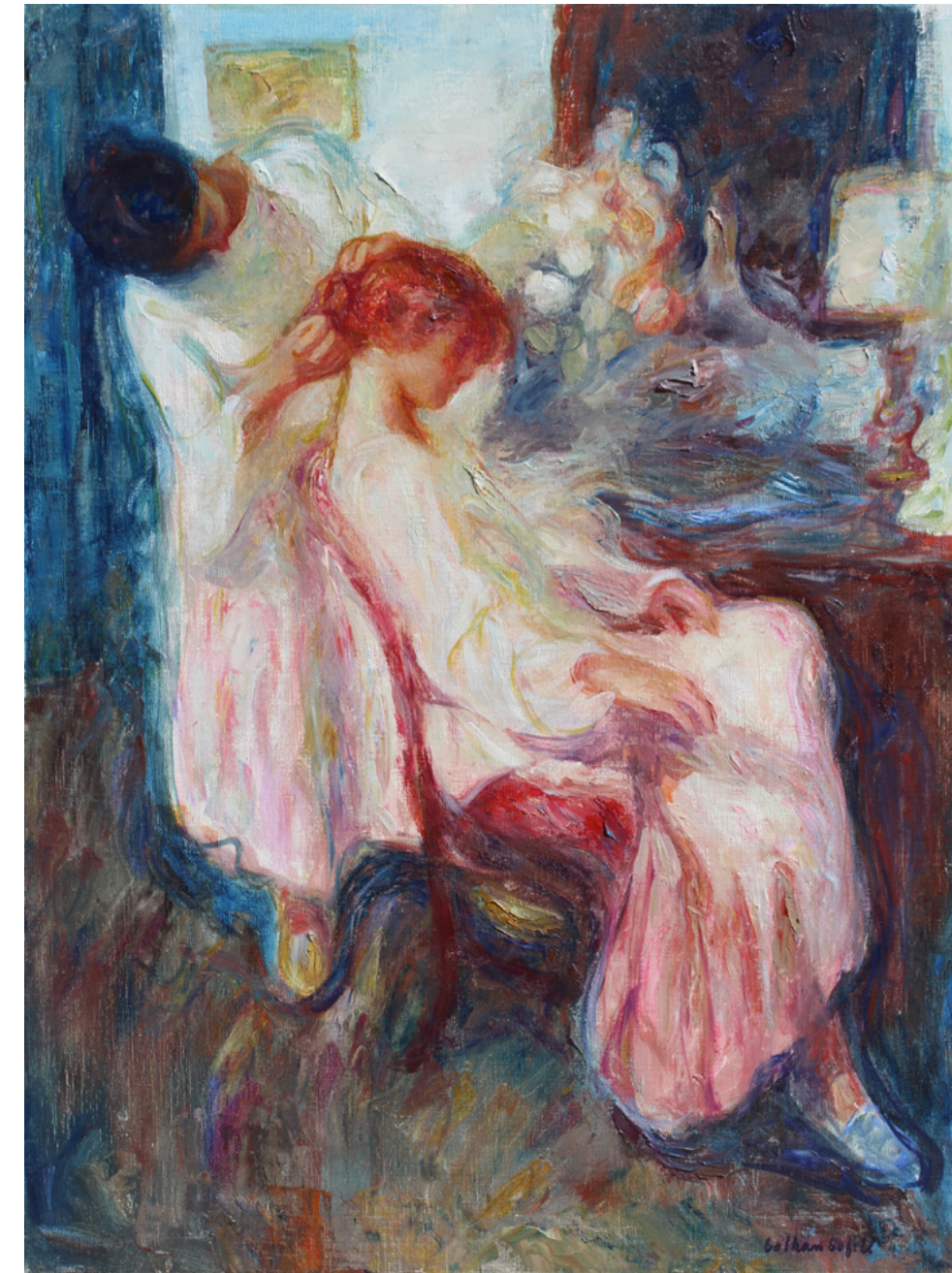
A self-portrait by Beltrán Bofill, showing a man in a dark suit and tie, looking slightly to the right. The background is dark and textured, with a vertical light-colored element on the right side.

Beltrán Bofill paints out of passion;
the mere act of painting is his addiction,
his great undeniable vice – a sort of vital
necessity or indispensable desire.”

– Joan Camps Ortiz



The Mediterranean has been a boundless source of inspiration for artists; sculptors, painters, and poets. These artists experience a profound and transcendental connection to these remarkable coasts, becoming a part of who they are, leaving a lasting mark on their souls and coloring their oeuvre. Such passion and attraction to the Mediterranean and its sunny days of leisure, create a bond that bridges the centuries and ties both masters and amateurs as near equal, to capture a certain beauty that can only be achieved by sprezzatura.

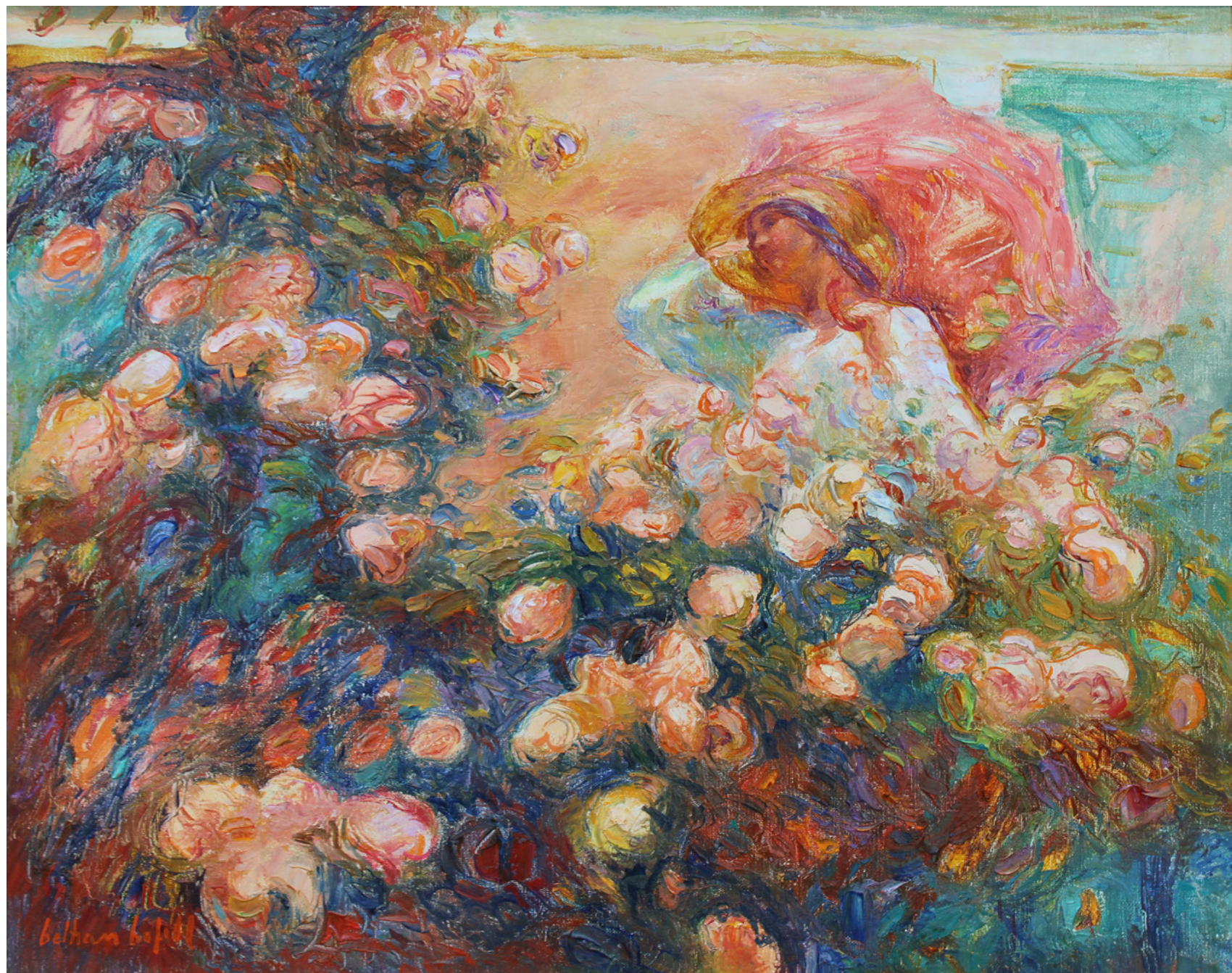


El Peinado | oil on canvas | 31 7/8 x 23 5/8 in. | FG© 139367

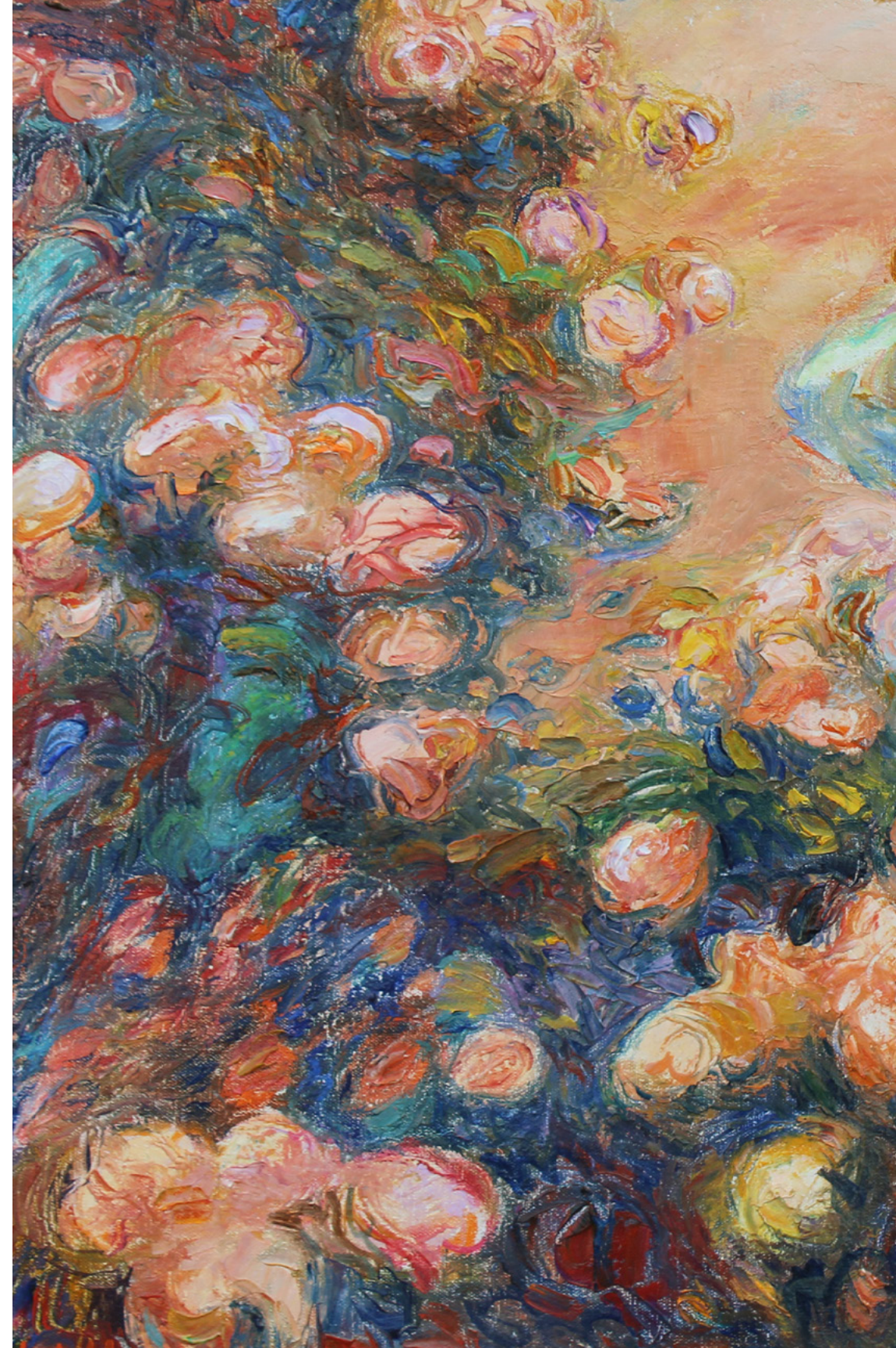


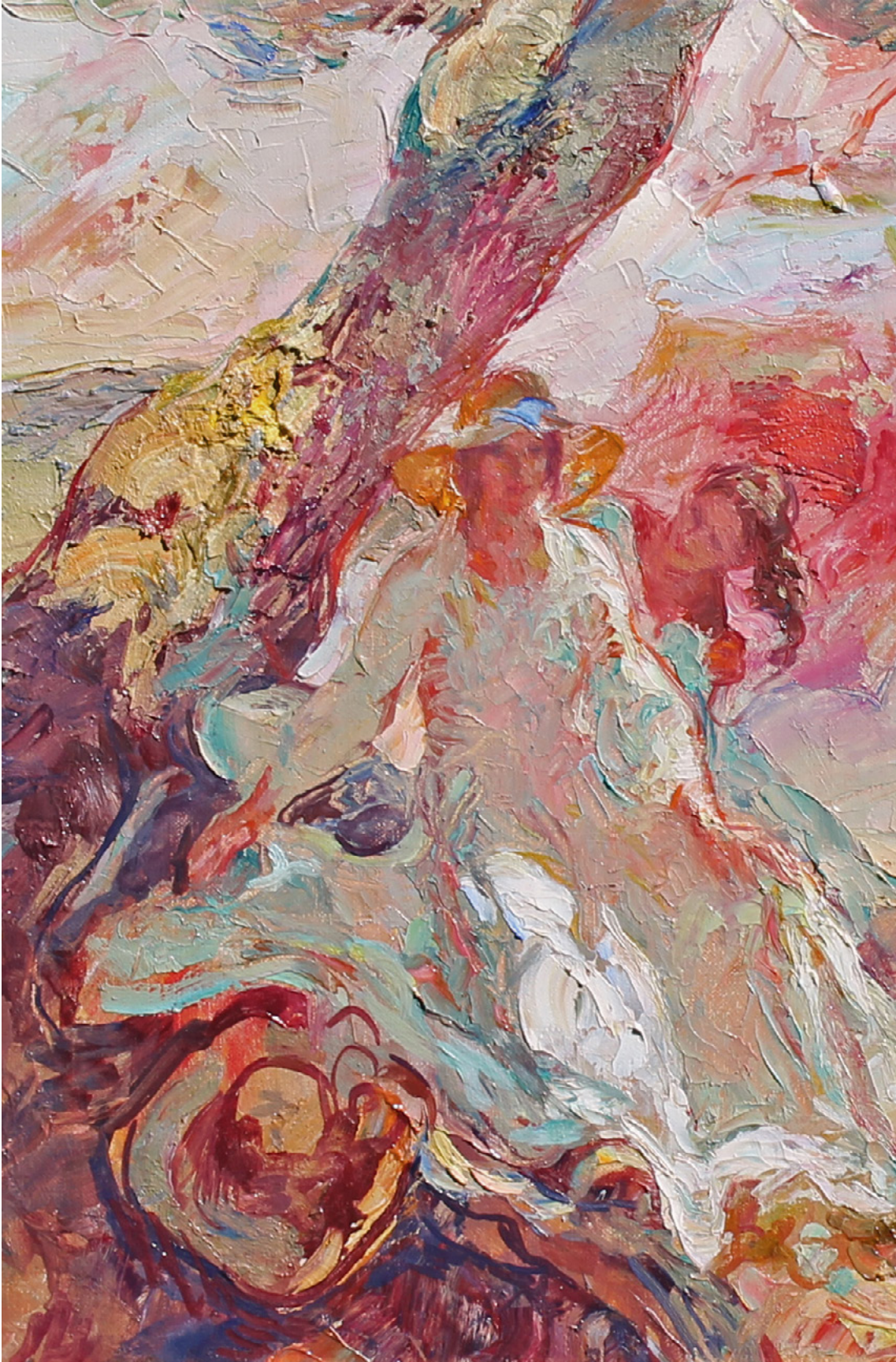
El Jardin | oil on canvas | 23 5/8 x 31 7/8 in. | FG© 139366



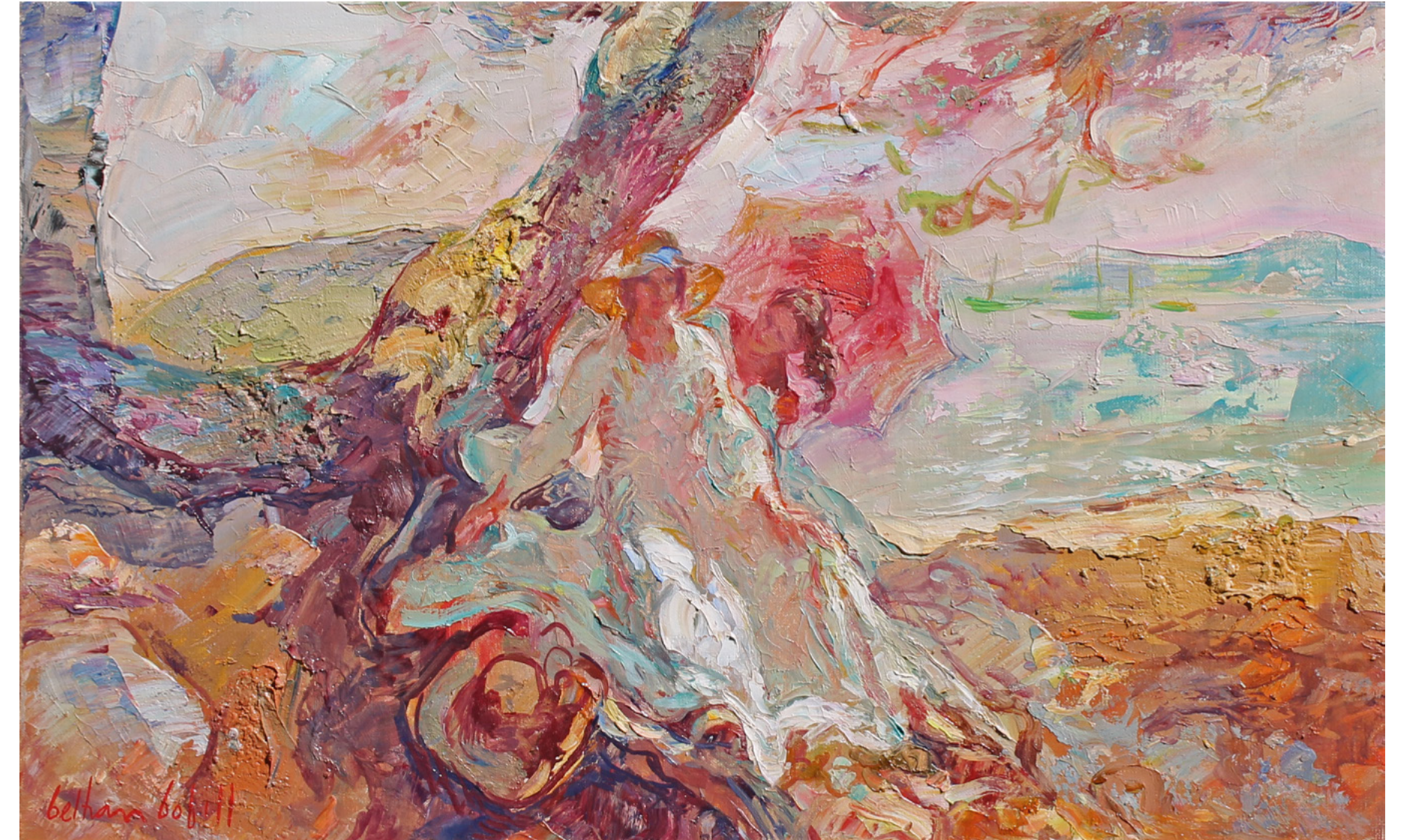


Bofill and his paintings sit proudly alongside the Mediterranean Masters. His entire body of work stands out as authentic yet fervently original. His understanding and application of techniques from masters who preceded him gave Bofill a strong foundation that balanced against his innovative, radiant style. Along with his peers, Bofill has left us works full of movement, beauty, and life, pulsing with the complex rhythm of the Mediterranean tides themselves.

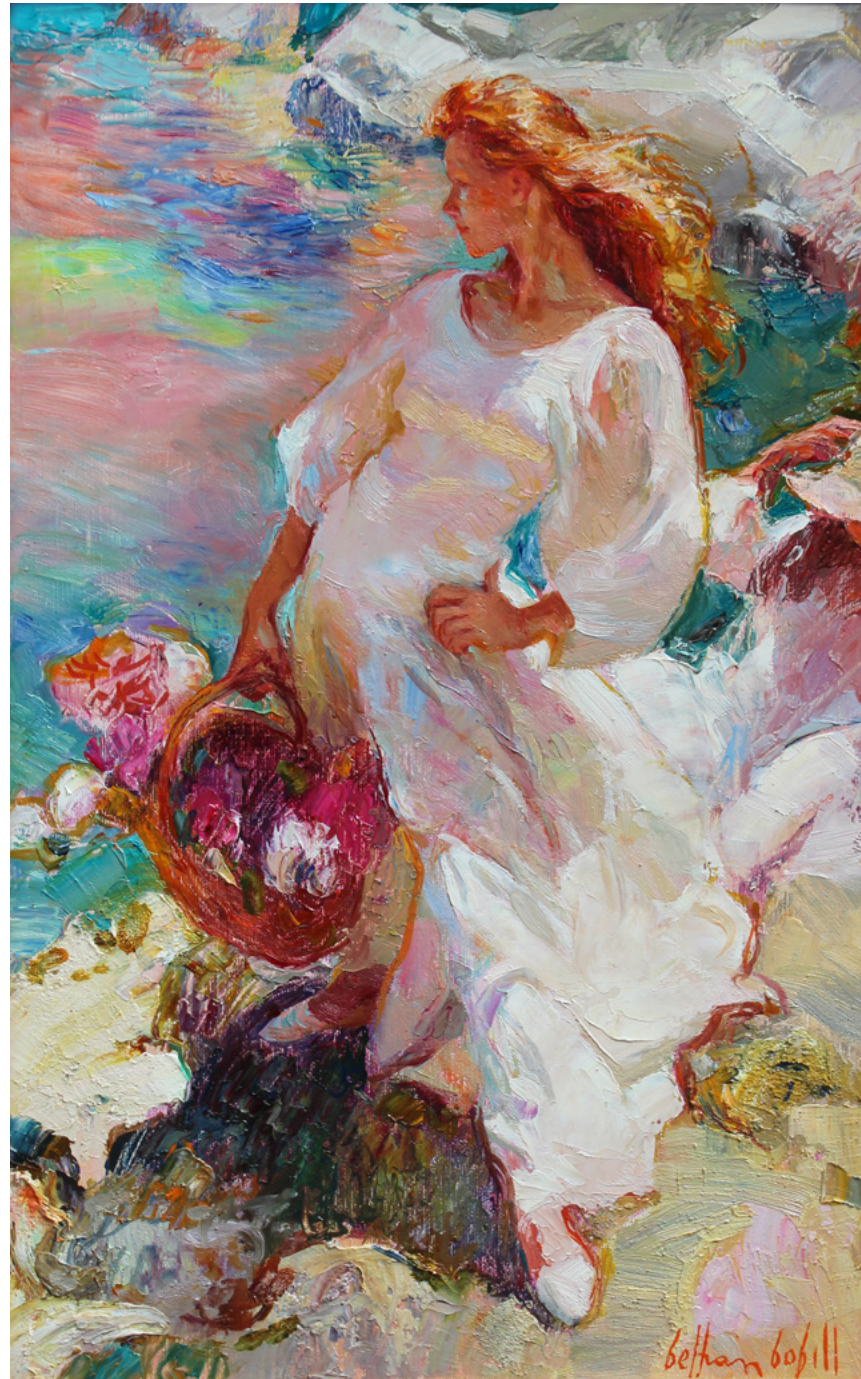




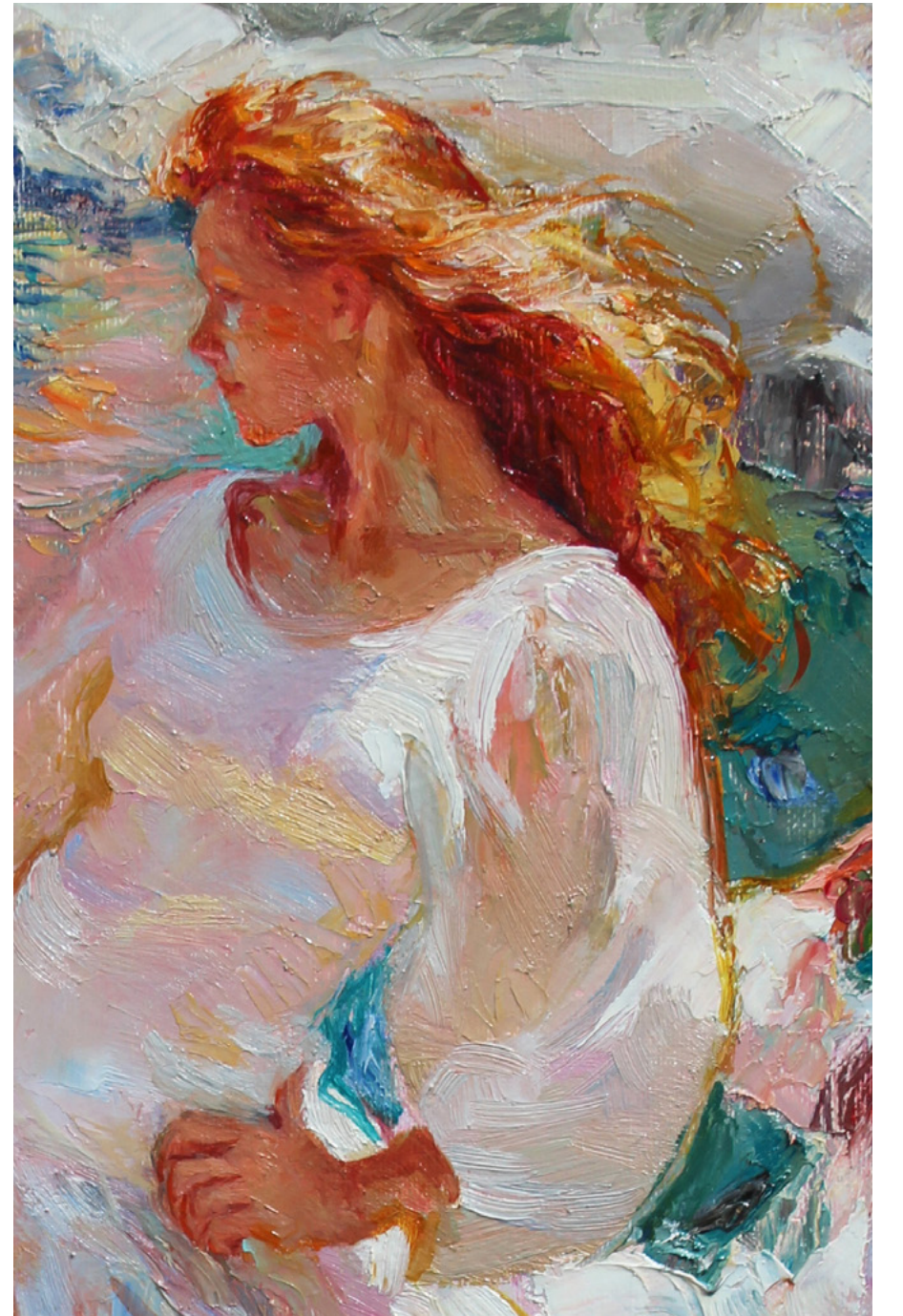
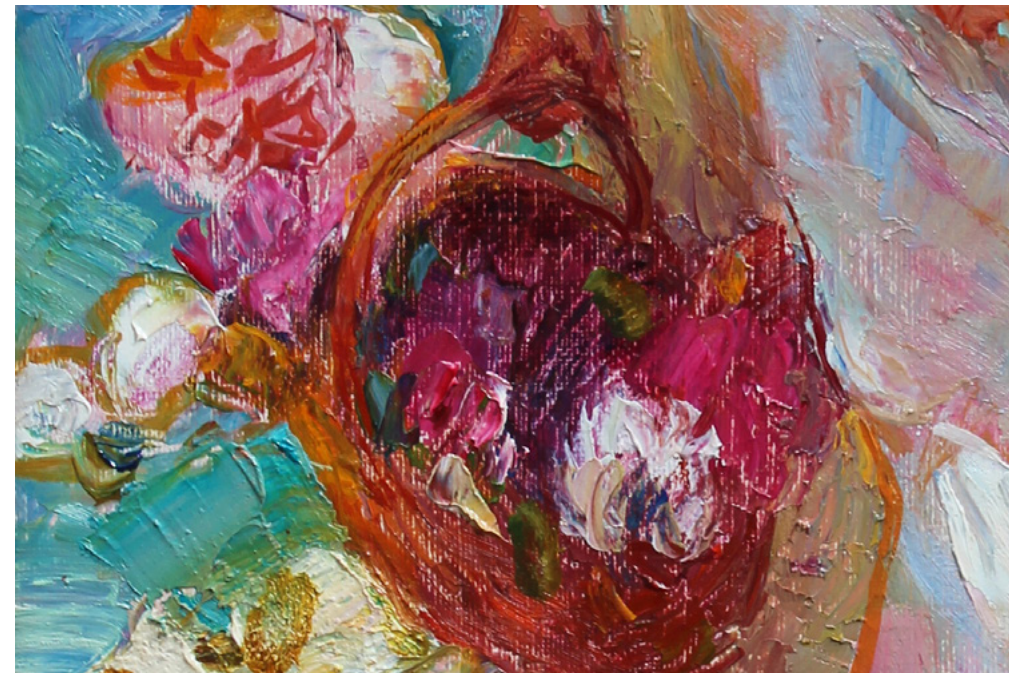
Bofill's works are ethereal and romantic. He handles figures as though they were flowers, delicately painting all the colors that sunlight reveals on skin and fabric. He effortlessly blends tree roots into hemlines with brushstrokes fluid like the warm sea at dawn. Bofill insists on the connection between the natural world and humans, mirroring a vine's curl in a woman's red hair or the angle of a wild bloom in a hat's brim. The soft colors of his scenes wrap themselves like gauzy veils around the figures depicted, joining them forever into the composition they become part of.



Goyesca en Formentor | oil on canvas | 15 3/16 x 24 3/16 in. | FG© 139003



Luces
oil on canvas
24 x 15 in.
FG© 139004



“When painting, it is imprecision that is sometimes essential. There are times when you have to stress something, correct some details, and let a little time pass. Or, on the contrary, you must let your brush slide over the canvas hurriedly and uncontrolled, with all your senses alert, your consciousness alive to every chance – and

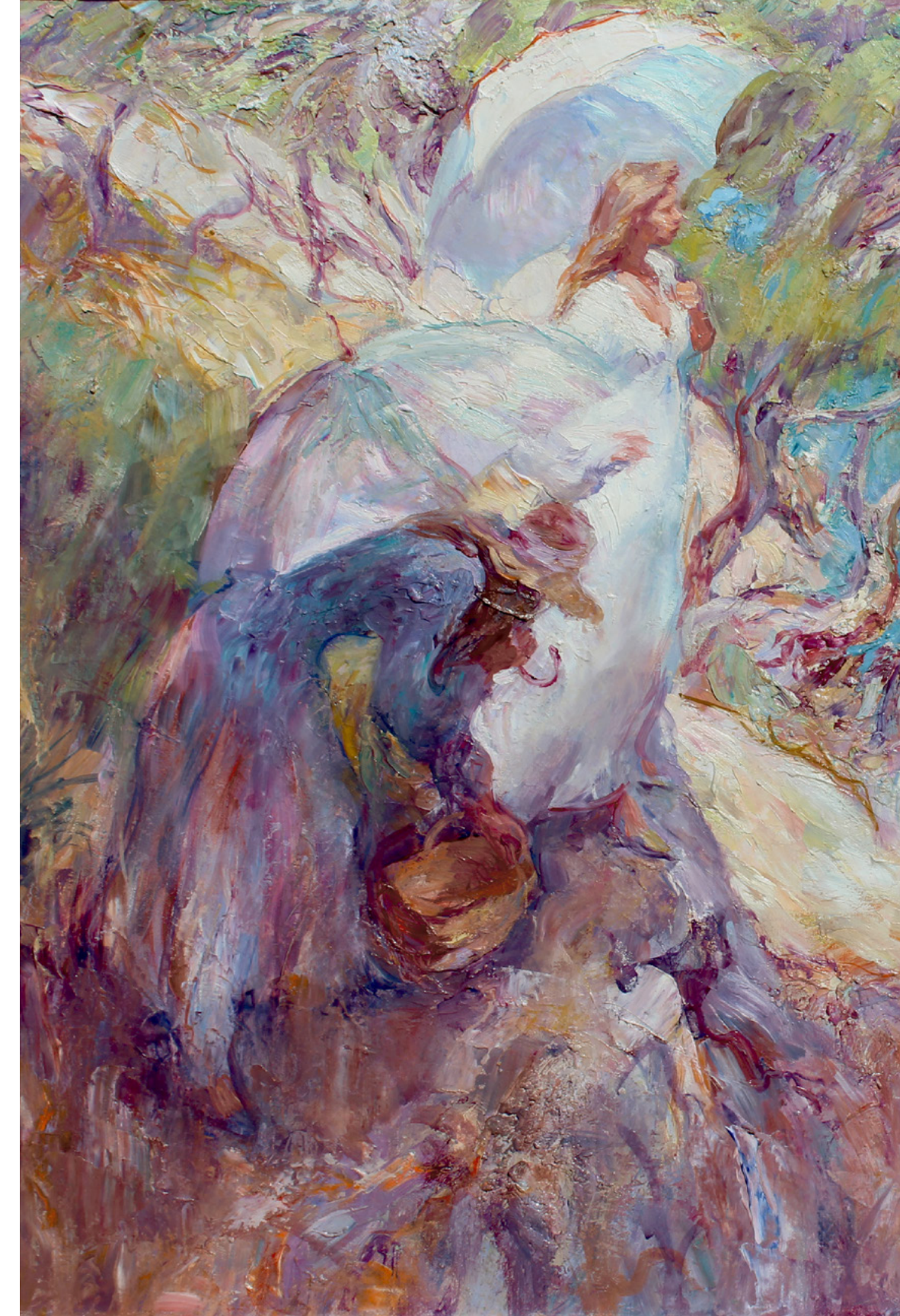


then perhaps, crestfallen, you have to wipe it out and start all over again. Everything, good and bad alike, will be confessed on the canvas, where the worst, by some miracle of talent, may turn out to be brilliant. To make painting a sort of fencing, skill, and expertise with art is absolutely senseless.”

– Beltrán Bofill, 1984



Bofill painted the life of the Mediterranean and the people within it. As a result, his work included interiors where the light faithfully represented the region's traditional architecture. He also painted everyday scenes where the denizens of the area engaged in common rituals, a young woman braiding her friend's hair or a trio of sister's picking flowers in a backyard garden. Although familiar happenings, these paintings become a remarkable moment through Bofill's quality of expression.





Primavera | oil on canvas | 38 3/16 x 51 3/16 in. | FG© 139554



Regardless of the setting, Beltrán Bofill's paintings have an indescribable quality found in only dreams and memories. His paintings become vessels of time as they graciously allow the viewer to be fully immersed in the unique beauty of his vision.

To Majorca,

*Serene and sea surrounded,
An island sails through the universe.*

*Do not move, my pretty,
As the East gazes on you,
Lit by the sun in splendor;
And the West dreams of you,
Teeming with sea and wind.*

– Beltrán Bofill



Sonrisa | oil on canvas | 39 3/8 x 31 7/8 in. | FG© 139404

Serigraphs on Paper

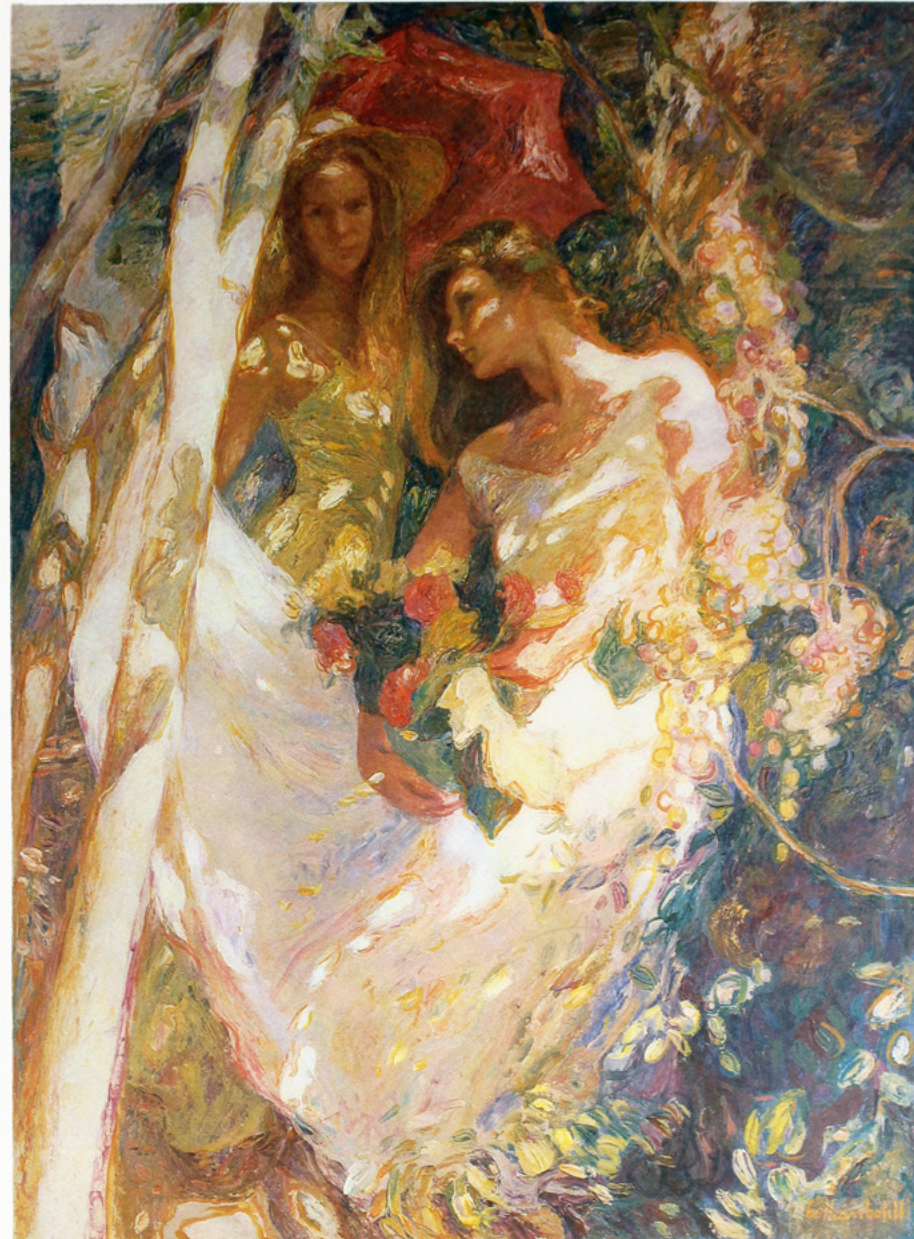




A/P

Betham Coffey

Luz y Figura | serigraph on paper
18 1/2 x 22 3/4 in. | FG© 129995-96



A/P

Betham Coffey

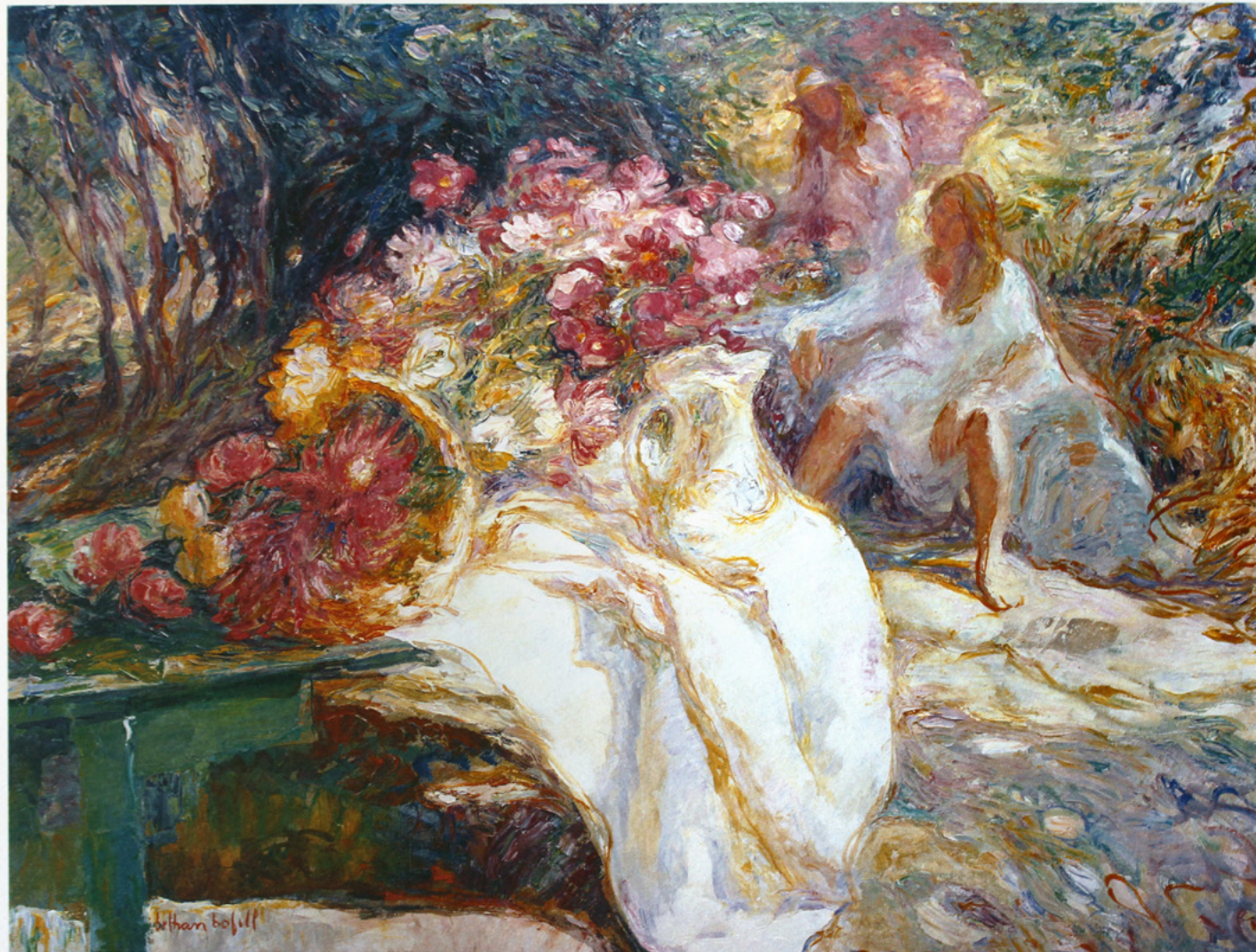
Entre sol y Sombra | serigraph on paper
18 1/2 x 22 3/4 in. | FG© 129978 - 80



A/P

Betham Coffey

Mesa Blanca | serigraph on paper
18 1/2 x 22 3/4 in. | FG© 130005-07



1/1

William Cobble

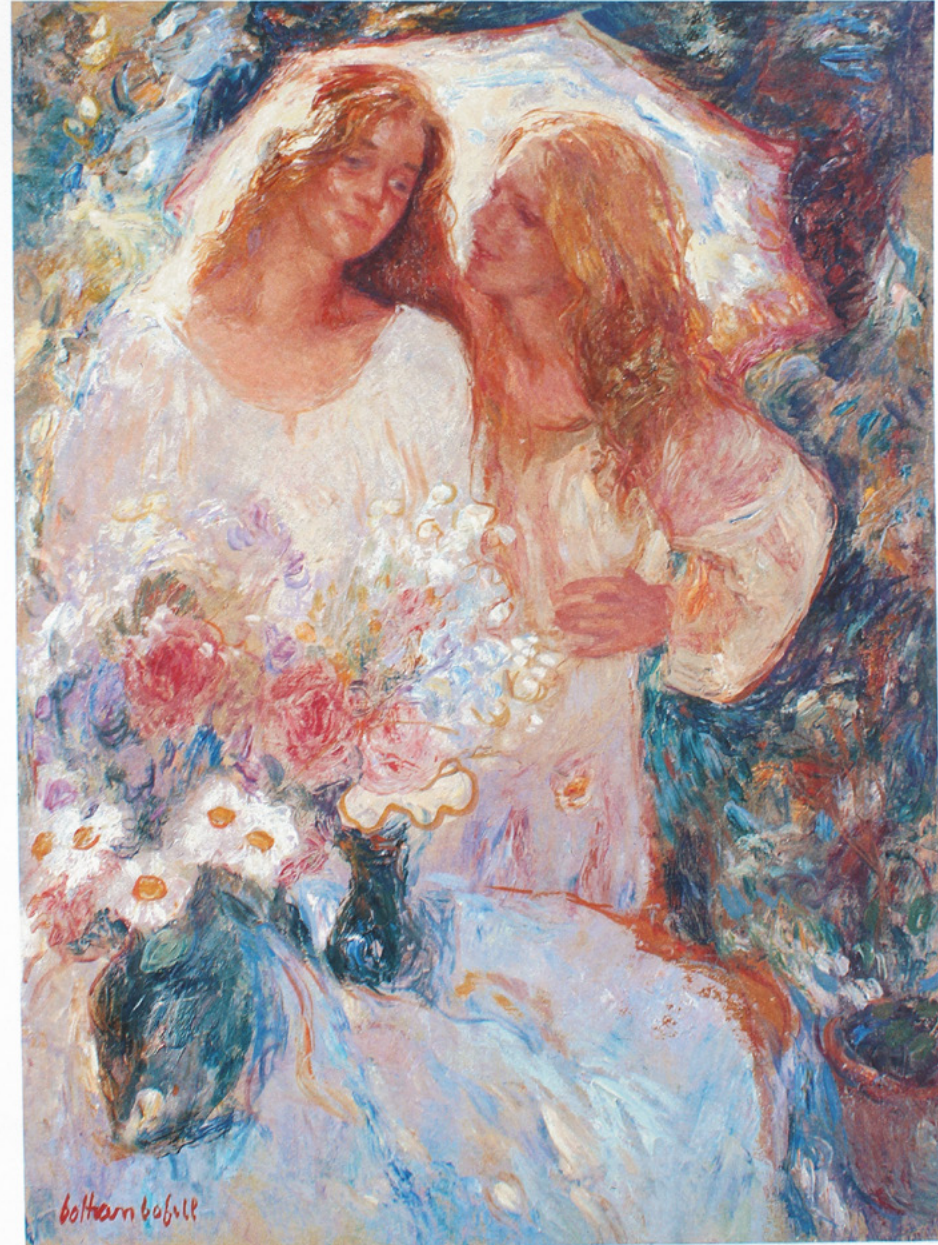


1/1

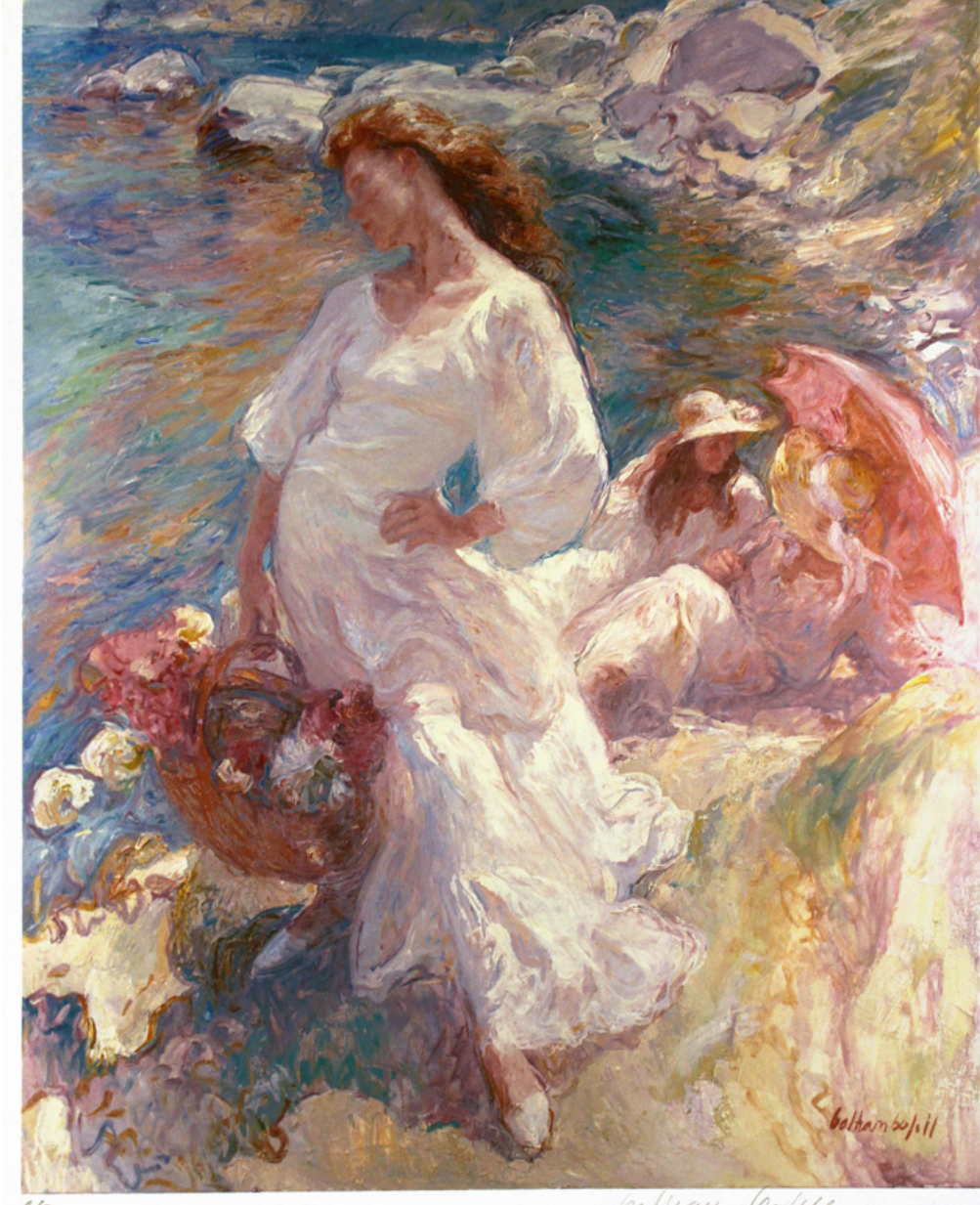
William Cobble



Día de sol y Viento | serigraph on paper
18 1/2 x 22 3/4 in. | FG© 129997-98



Modelos Nordicas | serigraph on paper
18 1/2 x 22 3/4 in. | FG© 130008 - 11



Seducción del Mar | serigraph on paper
18 1/2 x 22 3/4 in. | FG© 129999 - 130000



believe boys



FINDLAY GALLERIES

For further information and pricing of
these artworks please contact the gallery:

Palm Beach

561.655.2090

palmbeach@findlayart.com

165 Worth Avenue

Palm Beach, Florida 33480

New York

212.421.5390

newyork@findlayart.com

32 East 57th Street, 2nd Floor

New York, New York 10022

WWW.FINDLAYGALLERIES.COM