



FINDLAY GALLERIES

**His work reflects the often volatile nature of metropolitan life. This reflection of volatility, seen particularly in the abstract foundational cloudbursts which fill his canvases, also derive from his long-time fascination with volcanic activity.**



## FINDLAY GALLERIES



# NOAH LANDFIELD

(b.1979)

Noah Landfield was born and raised in New York City, in a Tribeca that was still full of commercial lofts and artists' residences, rather than brimming with expensive boutiques and ordinary families. This was fertile soil for a budding artist. Landfield, a son and grandson of painters, naturally inspired and gifted, followed his family craft.

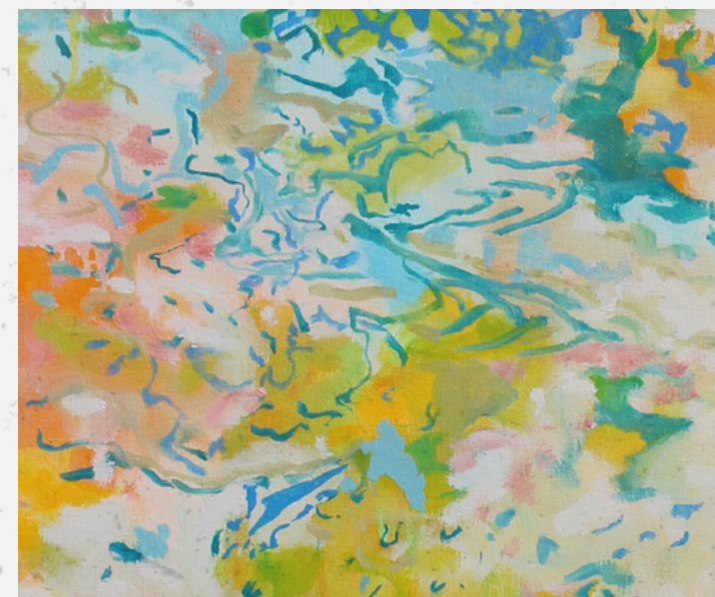
He utilizes impressionistic overlays of metropolitan architectural renderings inspired by his visits to Japan and his reaction to the compact urban environment of Tokyo and other major cities. Landfield's paintings are redolent of the tension between man-made urban structures, the forces of nature, and are also expressive of the way they manage to coexist. His execution of these ghostly images combines fine detail with broad sweeps of near abstraction in vibrant color. Questions arise through the unsettling nature of the imagery, are these images of the present, past, or future? Are they warnings? These temporal questions give a strong contemporary edge to Landfield's work, as does his play with visual perception in the near-photographic quality of the cities he depicts, which are painted in a masterfully pointillist manner.

Noah Landfield is intrigued by the possibility of visualizing energy and time in an artwork; to play with the interchange between color vibrations and to allow the viewer to become the synapse between painterly elements, completing the energy wave. Mixing line, shape, and surface variation with highly saturated color, and spatial imagery, the tension and disparity challenges the viewer's perception and asks them to look closer to figure out what he/she is looking at, this becomes the spark that contains energy.

Landfield received his MFA from City University, Hunter College in NYC. His work has been shown in numerous galleries on the east and west coasts. He currently resides and works in Brooklyn.



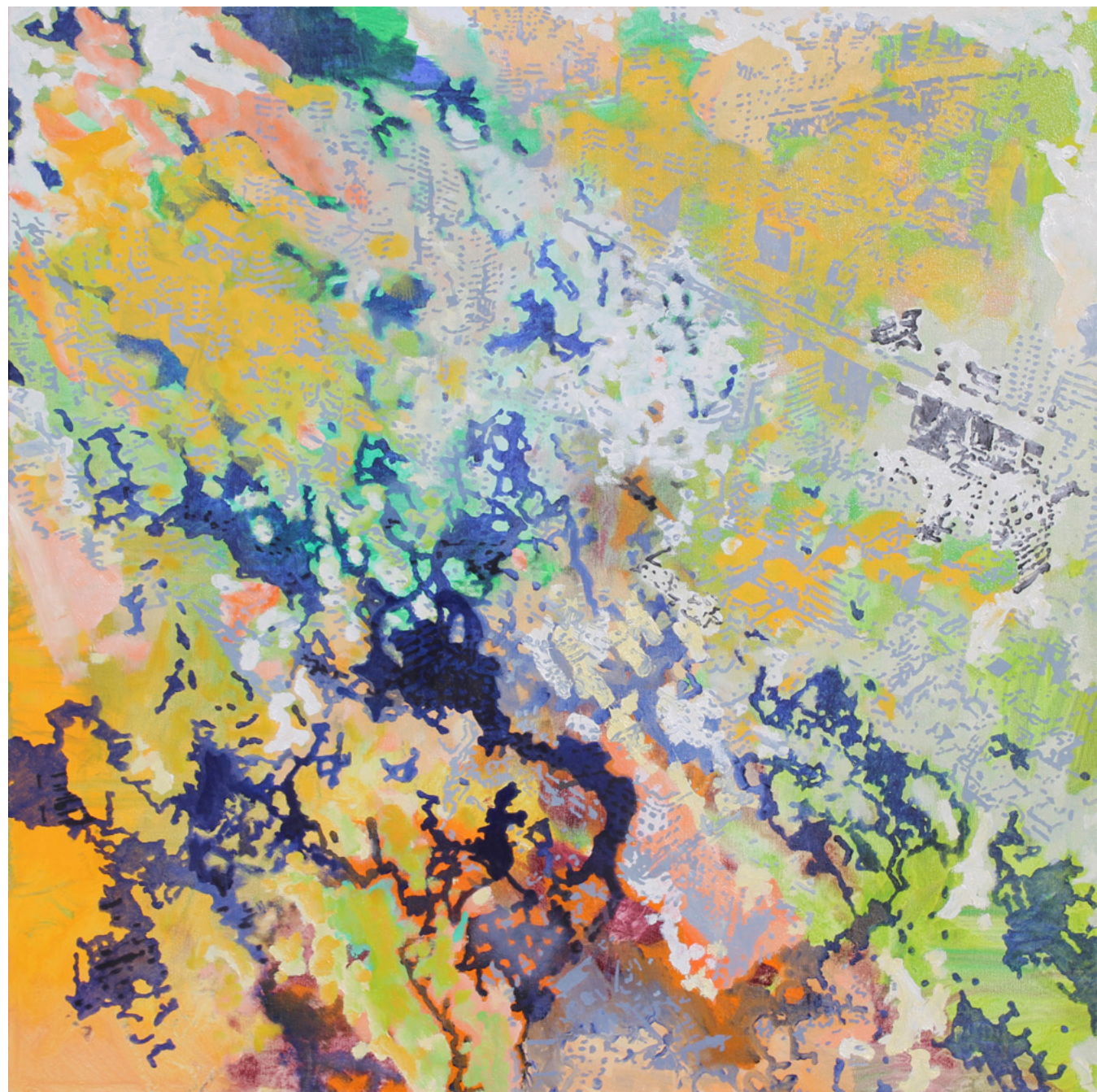
**Green Landscape**  
oil on canvas  
54 x 46 in.  
FG© 139320



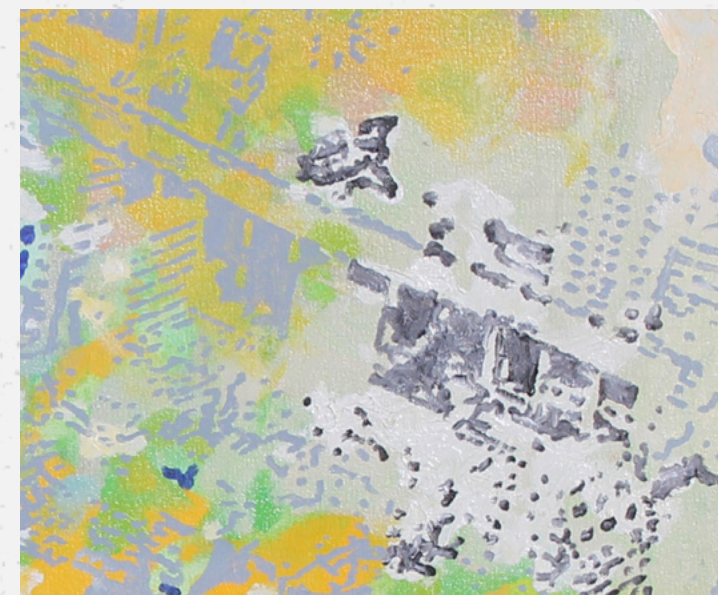
# EMERALD SKY

Emerald Sky  
oil on linen  
21 1/2 x 15 in.  
FG© 139327



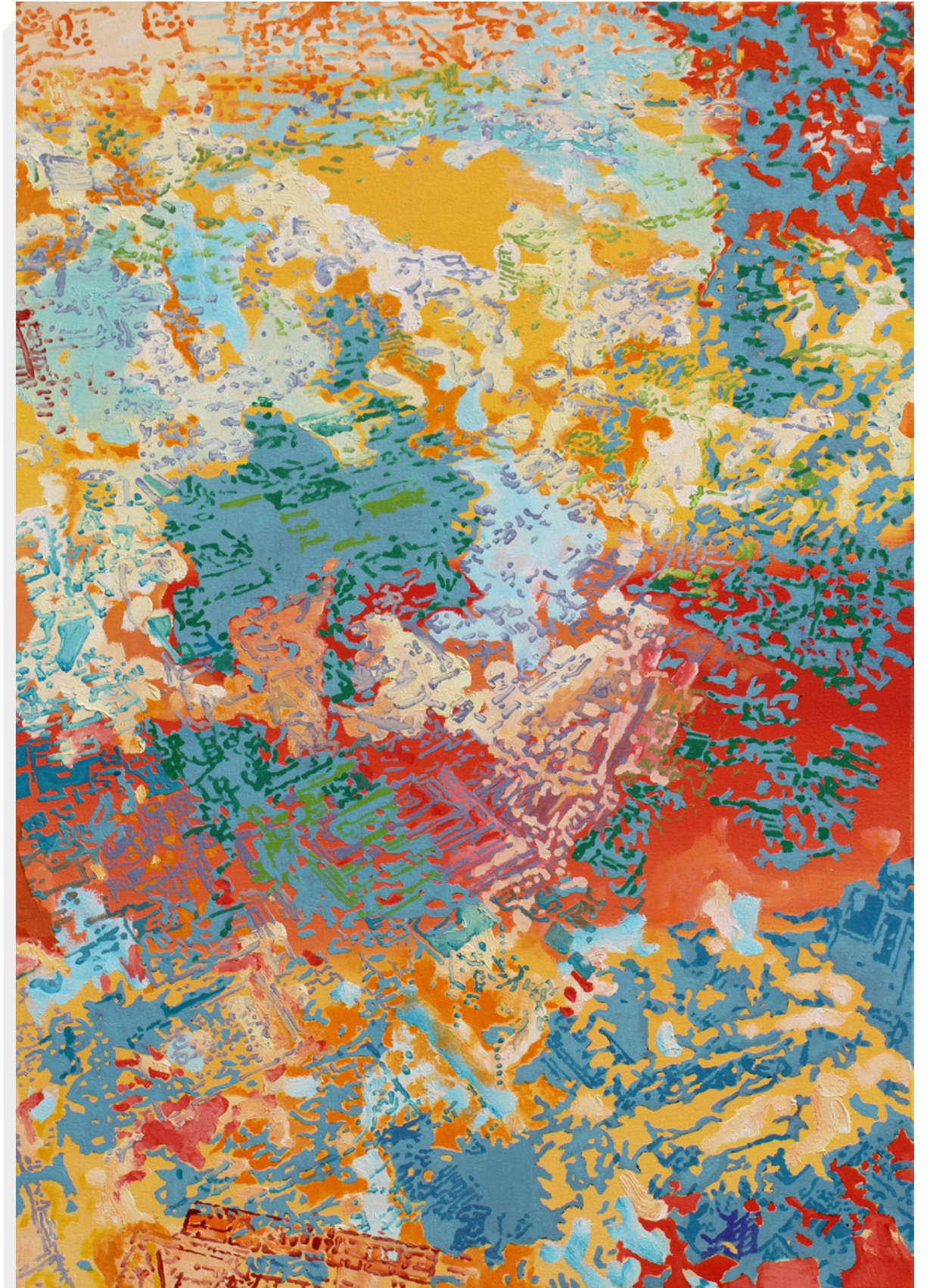


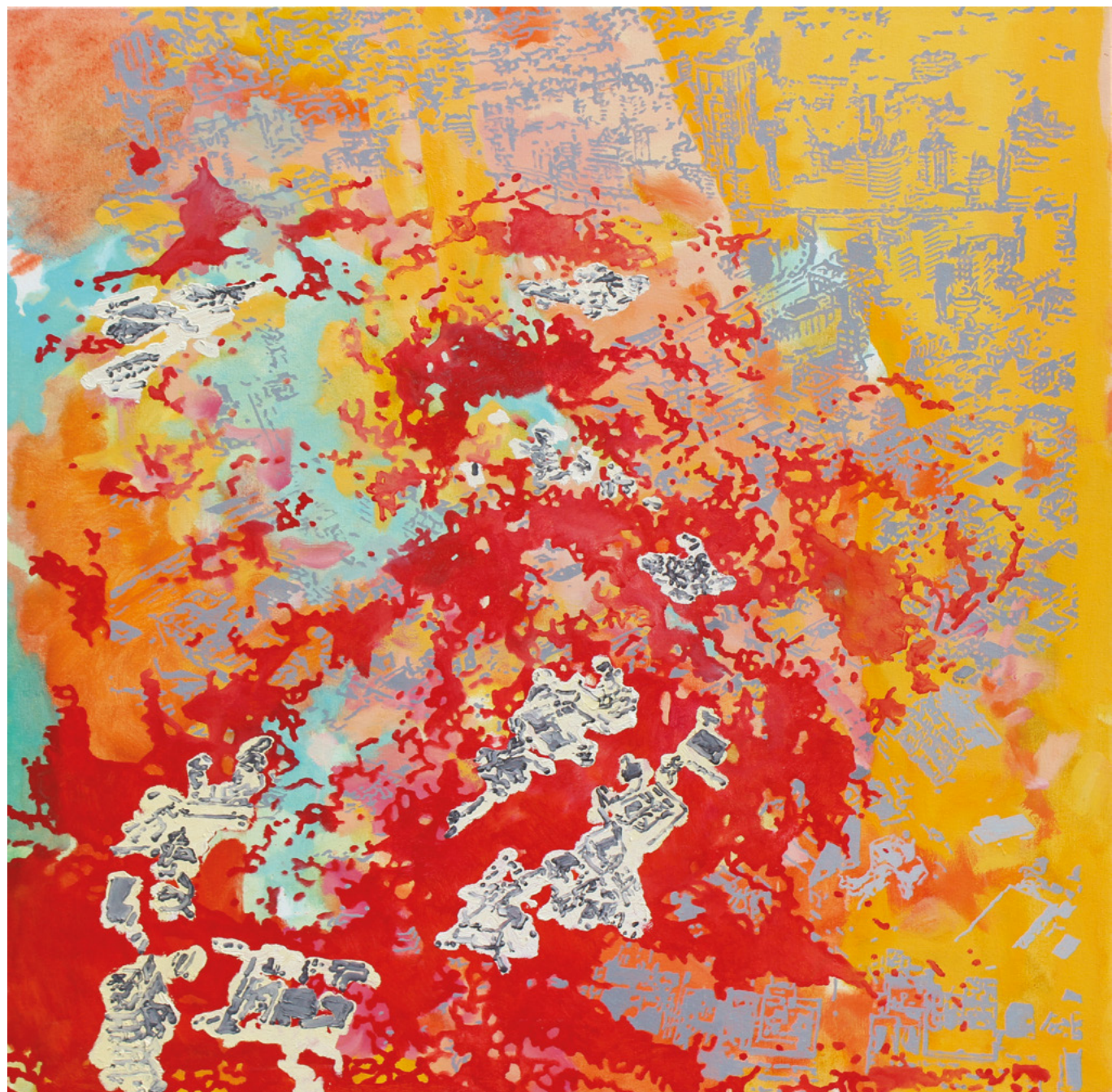
Growth  
oil on canvas  
42 X 42 in.  
FG© 139324



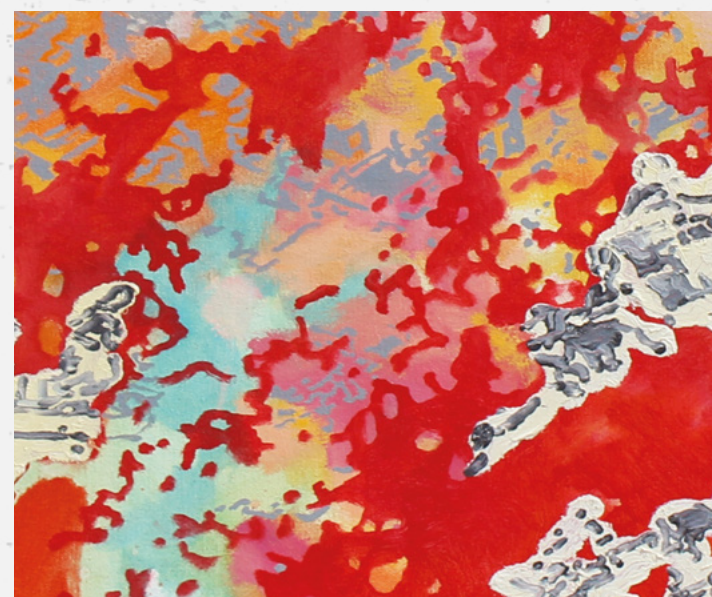
# FOLLOW THE SUN

Follow the Sun  
oil on canvas  
40 x 28 in.  
FG© 139326





Cauldron  
oil on canvas  
42 X 42 in.  
FG© 139321



Intrigued by the possibility of visualizing energy and time in an artwork; to play with the interchange between color vibrations and to allow the viewer to become the synapse between painterly elements, completing the energy wave.



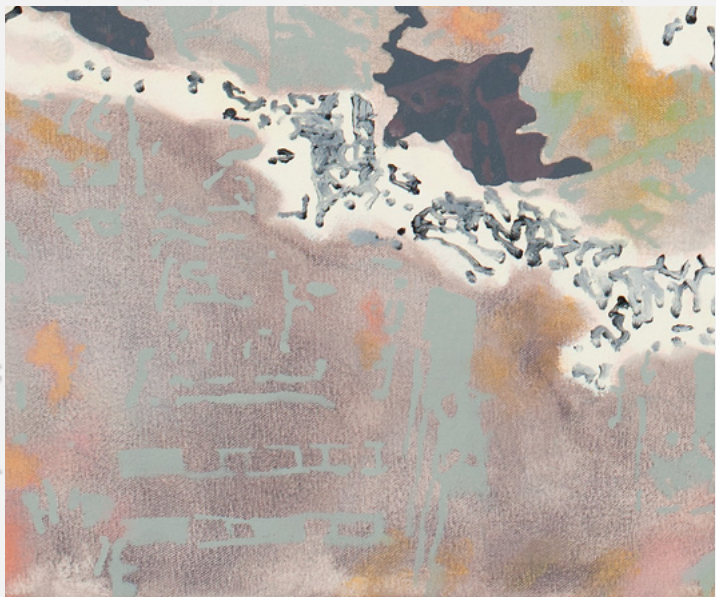
Walls in the Wind  
oil on canvas  
68 x 60 in.  
FG© 139317





Glow  
oil on canvas  
54 X 40 in.  
FG© 139323

WOTG



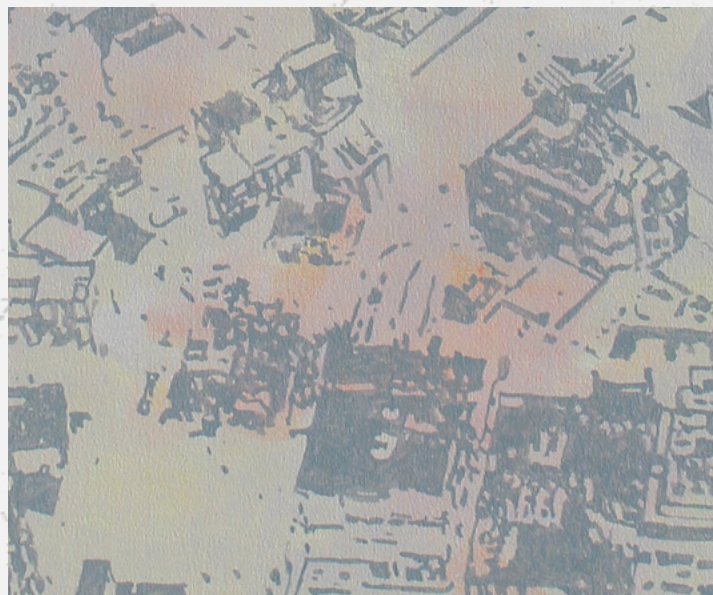
Untitled (Number 11)  
oil and acrylic on canvas  
45 x 42 in.  
FG© 137802





Sky Blue Water  
oil and acrylic on canvas  
42 X 34 in.  
FG© 137805

# SKY BLUE WATER



Ambiguous Cloud  
acrylic on canvas  
79 X 59 in.  
FG© 137822





# FINDLAY GALLERIES

For further information and pricing of  
these artworks please contact the gallery:

## **Palm Beach**

561.655.2090

[palmbeach@findlayart.com](mailto:palmbeach@findlayart.com)

165 Worth Avenue

Palm Beach, Florida 33480

## **New York**

212.421.5390

[newyork@findlayart.com](mailto:newyork@findlayart.com)

32 East 57<sup>th</sup> Street, 2<sup>nd</sup> Floor

New York, New York 10022

W W W . F I N D L A Y G A L L E R I E S . C O M