



FINDLAY GALLERIES

ISABELLE DE GANAY

le maître impressionniste



FINDLAY GALLERIES

ISABELLE DE GANAY

B. 1960

le maître impressionniste

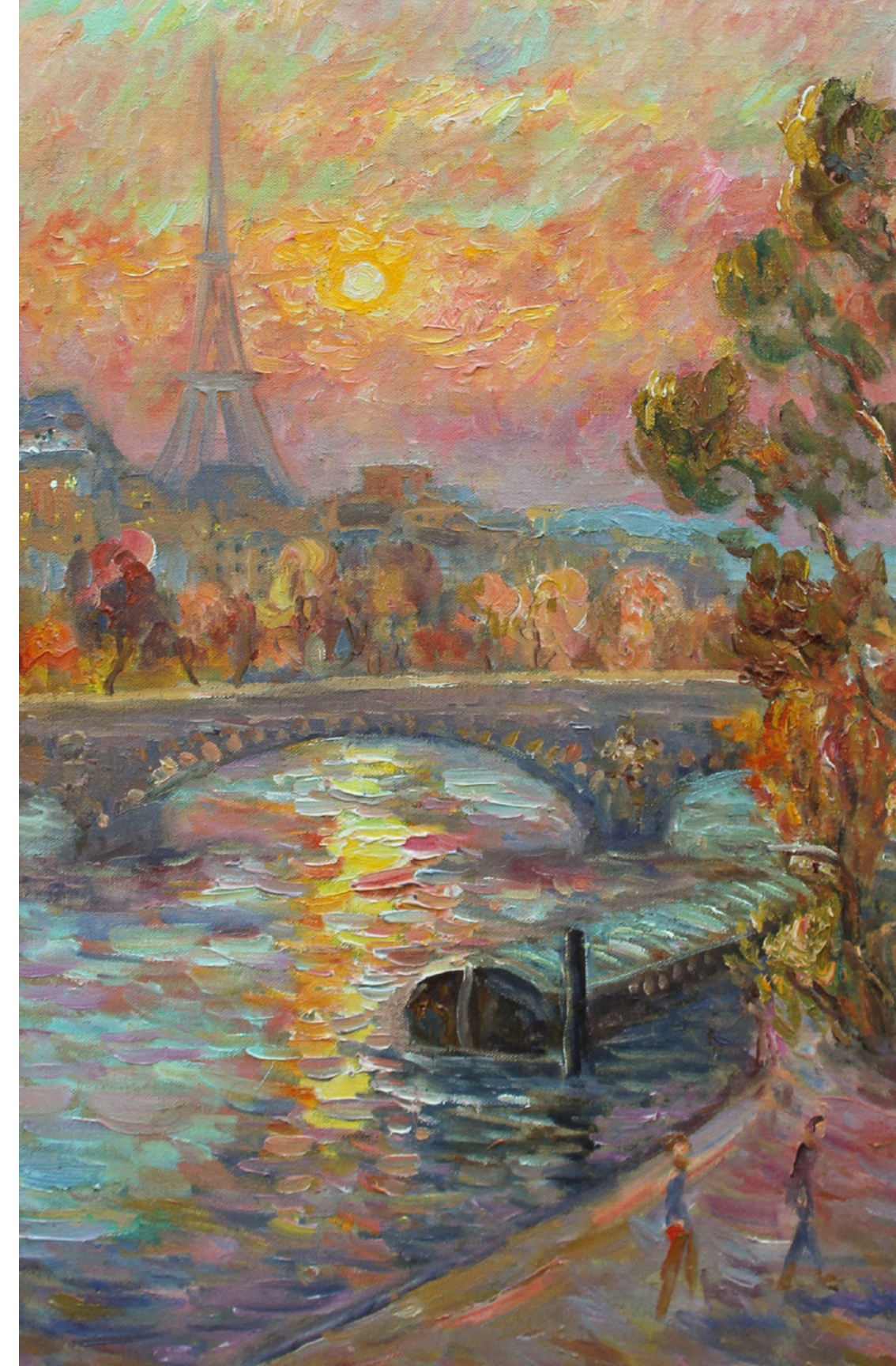
Villes et villages en couleur

Cities and Towns in Color





Isabelle de Ganay was born in Rouen in 1960. In Rouen, she discovered the same magic of the Normandy landscape that inspired the great names in Impressionism - Monet, Renoir, and Sisley. Isabelle was brought up in a family who for generations adored art, who knew and were instinctively drawn to genuine beauty. Her great-grandmother, Countess Martine de Béhague, was one of the great art patrons of the 1920s. Her splendid collection included the works of Leonardo de Vinci, Titian, Durer, and Monet; these works can now be enjoyed at the Louvre.



tour Eiffel | oil on canvas | 28 3/4 x 23 5/8 in. | FG© 139214



Rouen et environs

Rouen and Surrounding Areas





Féerie en Normandie | oil on canvas | 44 7/8 x 57 1/2 in. | FG© 137827



Les Voiliers Vers Duclair | oil on canvas | 44 7/8 x 57 1/2 in. | FG© 137011



Art and nature very quickly occupied a predominant place in the life of young Isabelle and when she was only 15 years old, she accepted an honor rarely bestowed on someone so young, an invitation to study at the famous Beaux-Arts in Rouen. In 1976, Isabelle met Albert Malet, the last Impressionist painter of the School of Rouen. Malet had been a student of the original founder of the School of Rouen, Robert Antoine Pinchon, and he would become Isabelle's mentor for the next ten years. Isabelle continued her formal education at the Academie Julian and L'École des Beaux-Arts in Paris, where she was first in her class.



Les roses à Duclair | oil on canvas | 23 3/4 x 36 1/4 in. | FG© 137840



Dieppe | oil on canvas | 25 9/16 x 31 7/8 in. | FG© 137027



Cargo à la Fontaine | oil on canvas | 31 7/8 x 39 3/8 in. | FG© 137042

Champs et petites villes

Fields and Small Villages





Vent dans les champs | oil on canvas | 23 3/4 x 36 1/4 in. | FG© 137845

After her studies, she returned to Rouen and began exhibiting throughout France. Critics praised her unique style and several exhibitions followed for the artist. Malet, who had always been aware of her gift as an artist, designated Isabelle as his successor. Upon his death in 1986, Isabelle assumed his position as Maître de l' École de Rouen thus carrying the responsibility of passing on the knowledge and techniques of one of the last French schools of art.





Paysage enchanté | oil on canvas | 51 3/16 x 63 3/4 in. | FG© 137826



Más vers La Cadiere | oil on canvas | 23 3/4 x 36 1/4 in. | FG© 135903





Port de Sanary | oil on canvas | 23 3/4 x 36 1/4 in. | FG© 135900



Marché de la Cadière | oil on canvas | 25 9/16 x 31 7/8 in. | FG© 135899

Fleurs d'Isabelle

Isabelle's Flowers





Hydrangeas
oil on canvas
39 3/8 x 31 7/8 in.
FG© 137039



Jetee De Dahlias
oil on canvas
28 3/4 x 23 5/8 in.
FG© 136980

**Composition au Citron
et Vase de Sèvres**
oil on canvas
31 7/8 x 25 9/16 in.
FG© 136988



Bouquet Printanier
oil on canvas
21 5/8 x 18 1/8 in.
FG© 136975



Jardins enchanteurs

Enchanting Gardens

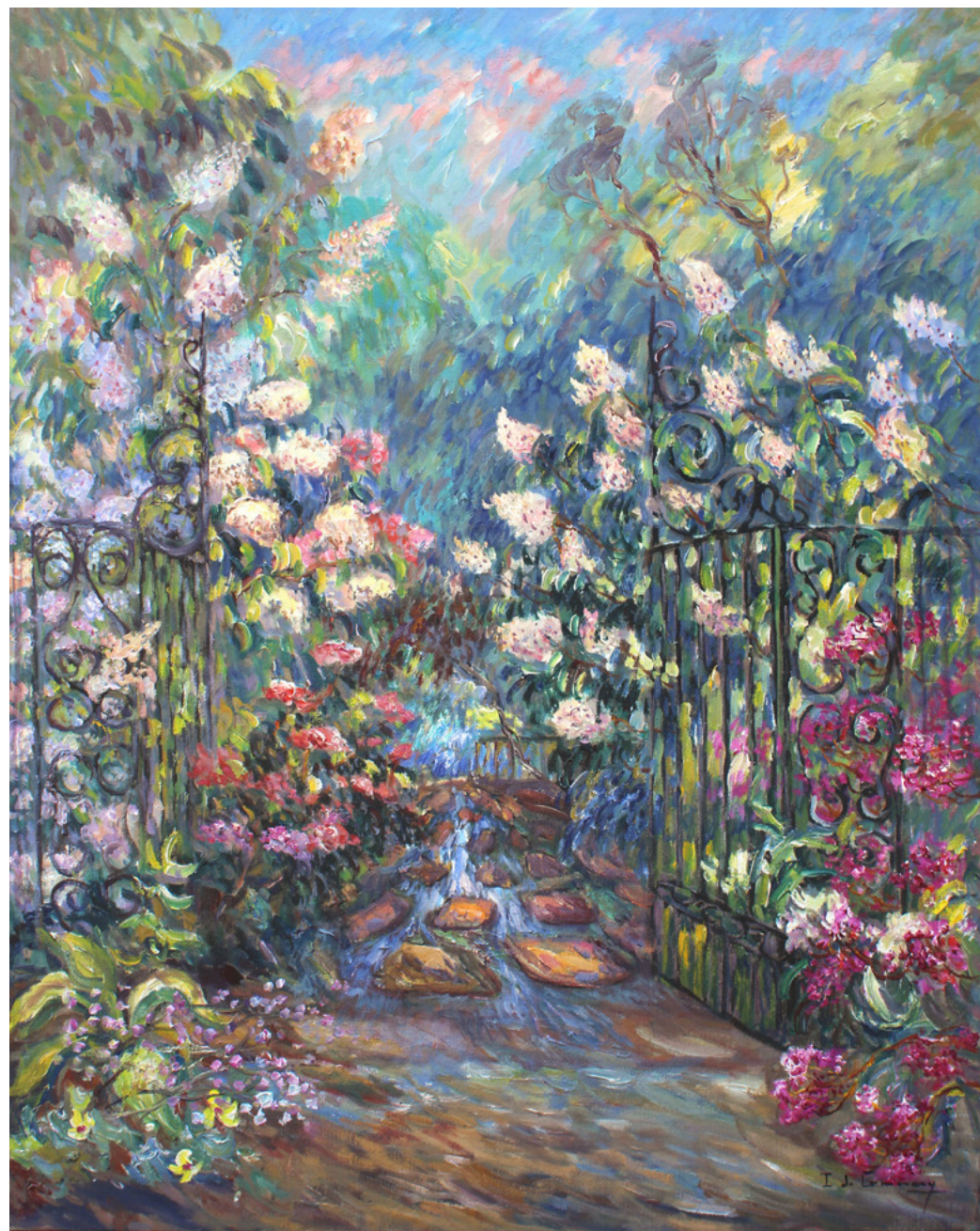




Jardin de Claude Monet
oil on canvas
25 9/16 x 21 1/4 in.
FG© 135887



Petite maison en Normandie
oil on canvas
36 1/4 x 23 3/4 in.
FG© 135905



Left
Lever du jour
 oil on canvas
 36 1/4 x 23 3/4 in.
 FG© 139245

Center
Grille à Agapentes
 oil on canvas
 36 1/4 x 23 3/4 in.
 FG© 139247

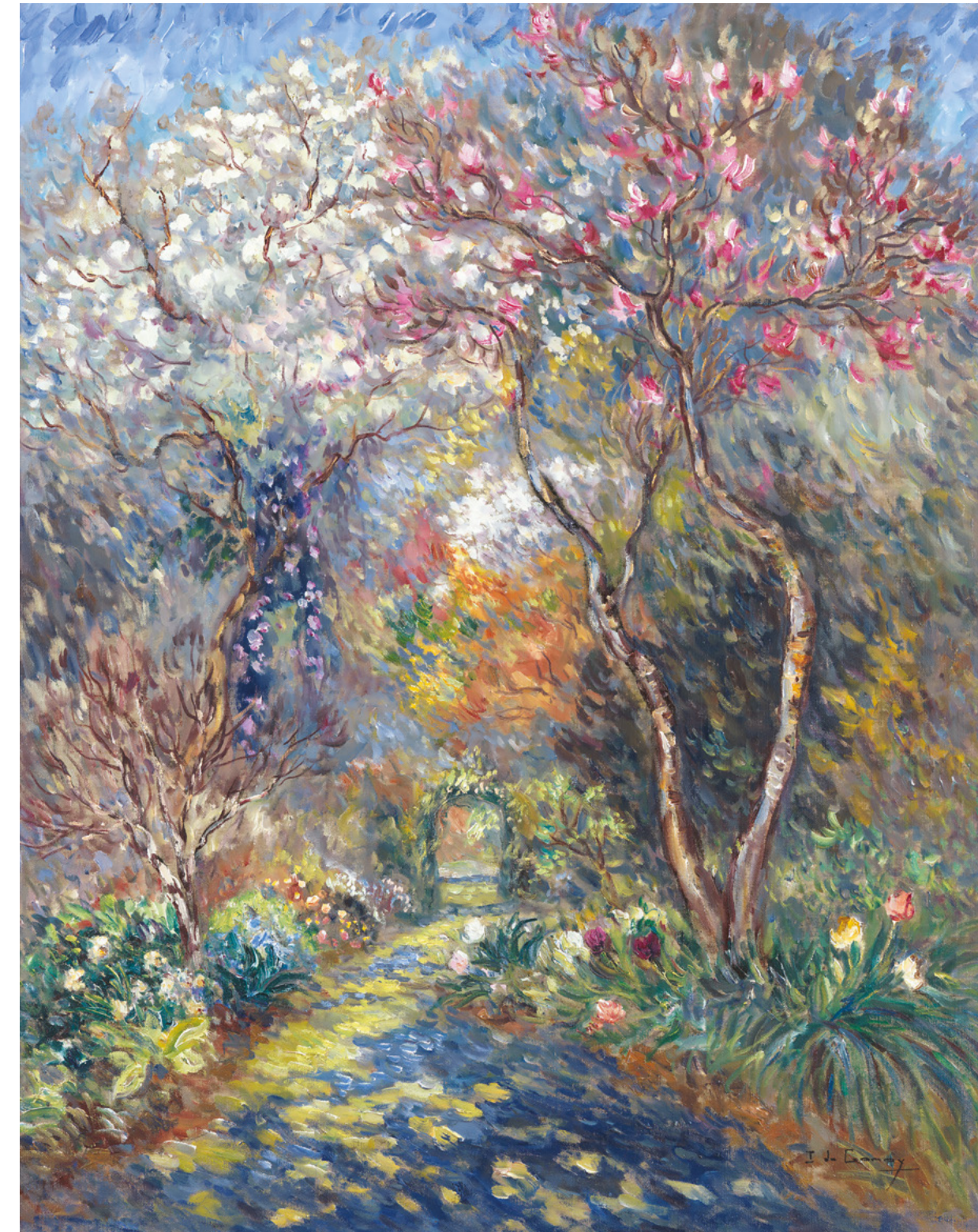
Right
Le petit bassin
 oil on canvas
 36 1/4 x 23 3/4 in.
 FG© 139248



Isabelle De Ganay is undoubtedly one of the truest disciples of en plein air. She fully immerses her senses within the moment and time of a painting. She embraces the fluctuations in the surrounding atmosphere and transfers the feeling of that present moment, in its truest form, to a brushstroke on the canvas before her. This technique allows her to seize and translate onto the canvas the most precious ephemeral moments.

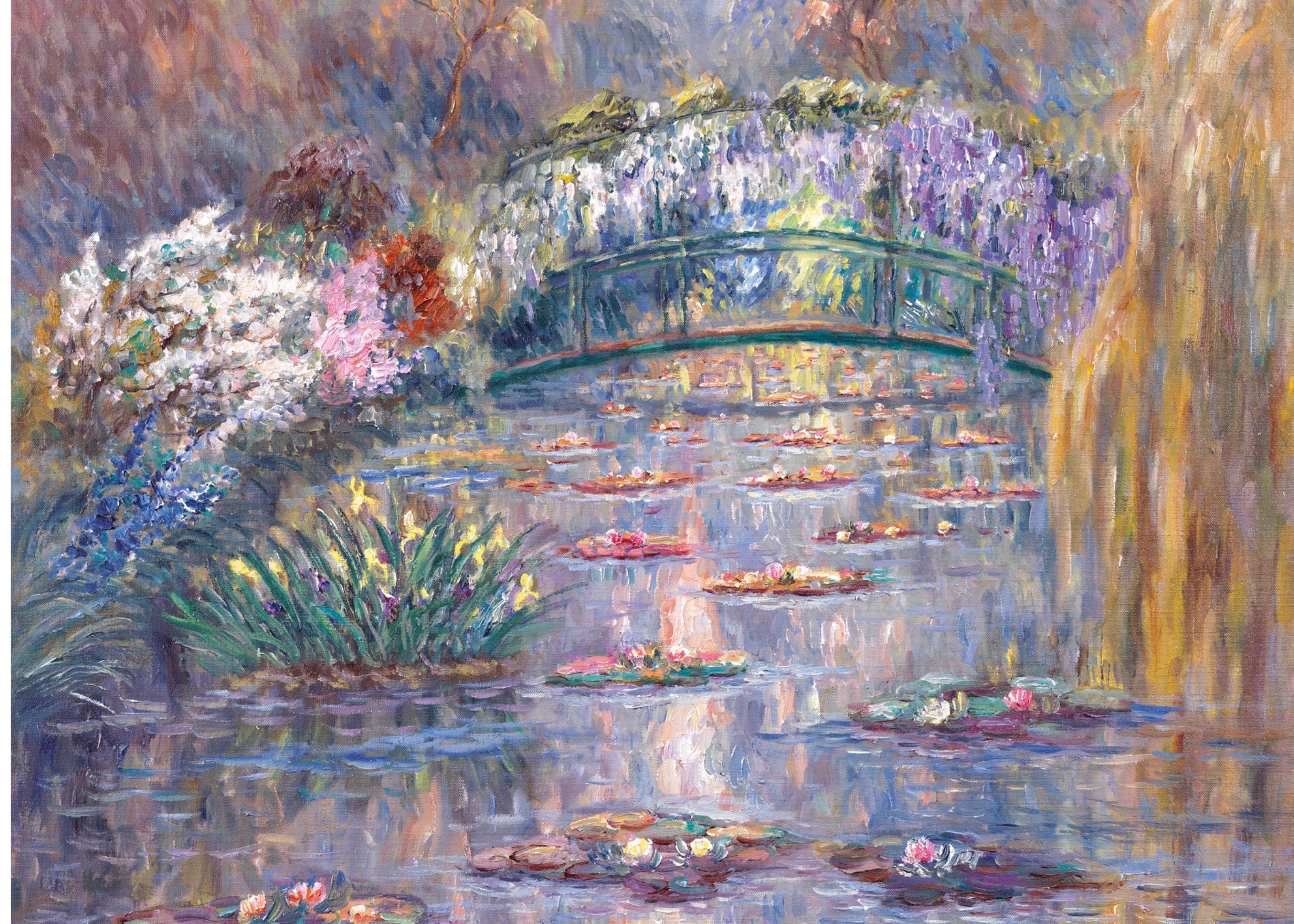
a canvas from Isabelle de Ganay is one vibrating with warm, thrilling colors and brushstrokes that feel like they are constantly in motion. With all artistic elements considered, a viewer is left with a rich and enchanting painting, an underlying lucidity, displaying the most intriguing environs.

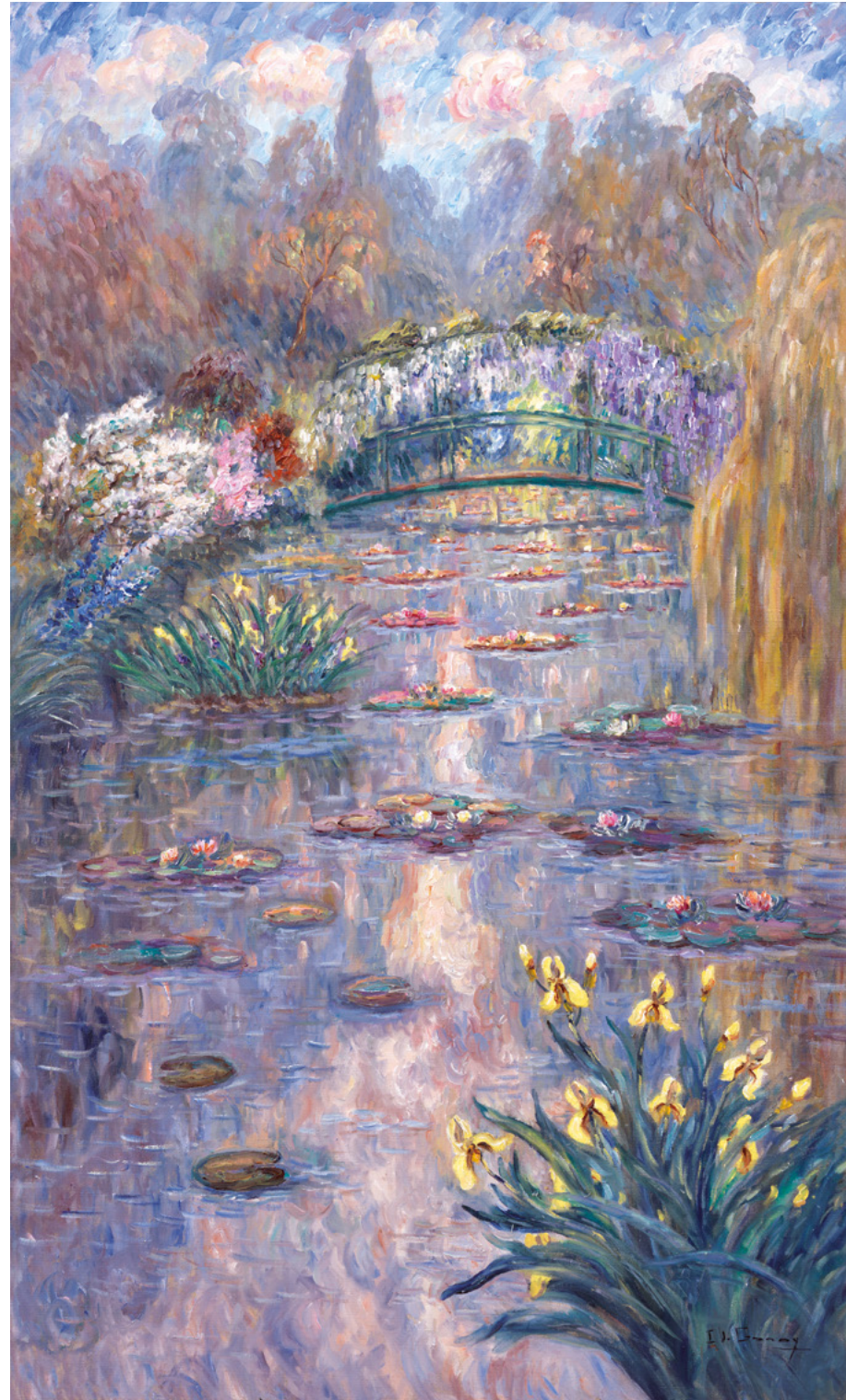
Le magnolia
oil on canvas
36 1/4 x 23 3/4 in.
FG© 137848



Giverny

Monet's Garden

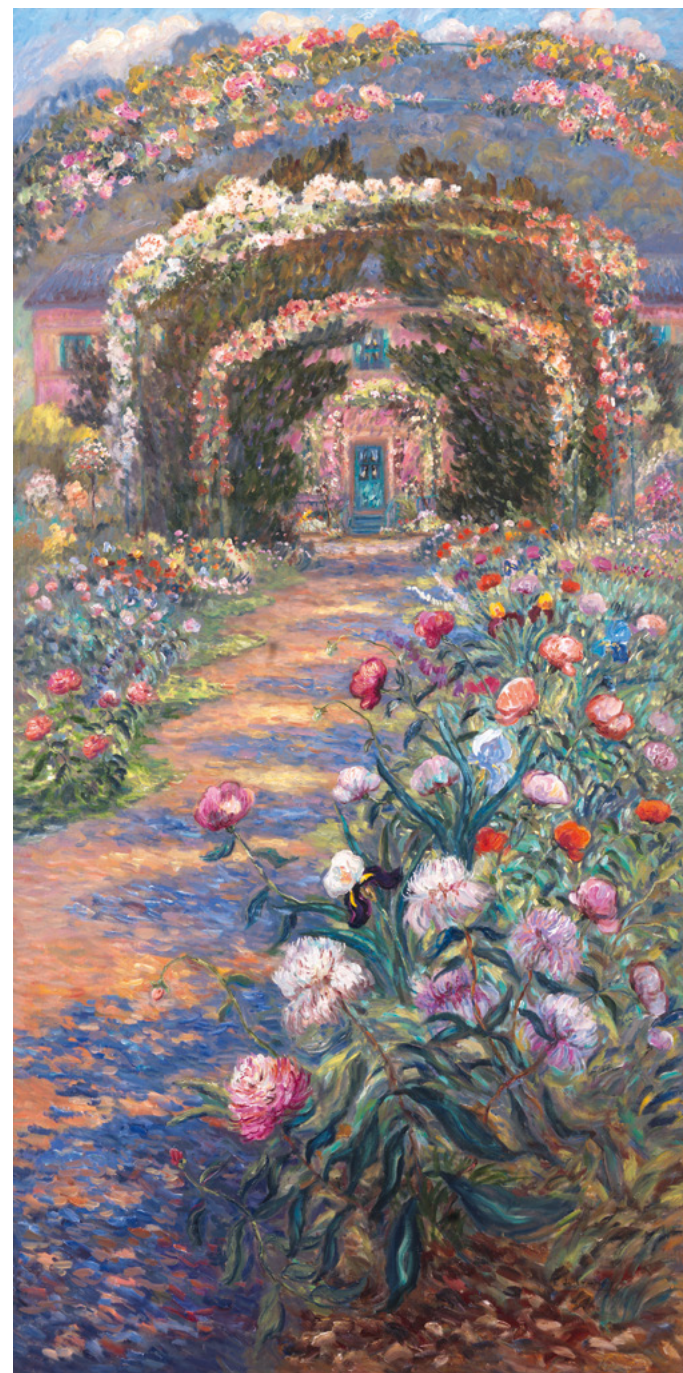




Pont Japonais à Giverny
 oil on canvas
 57 1/2 x 35 1/16 in.
 FG© 135919

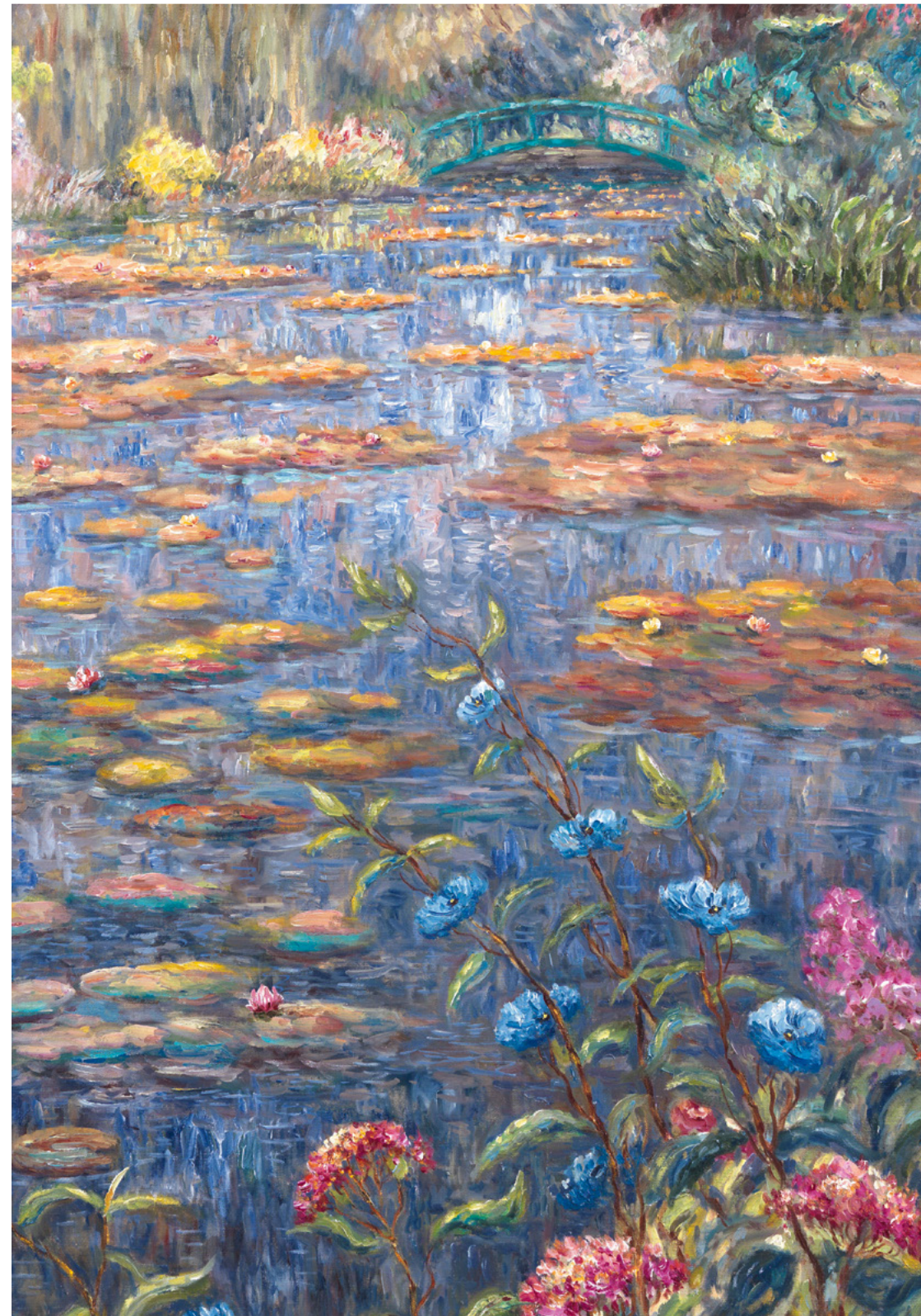
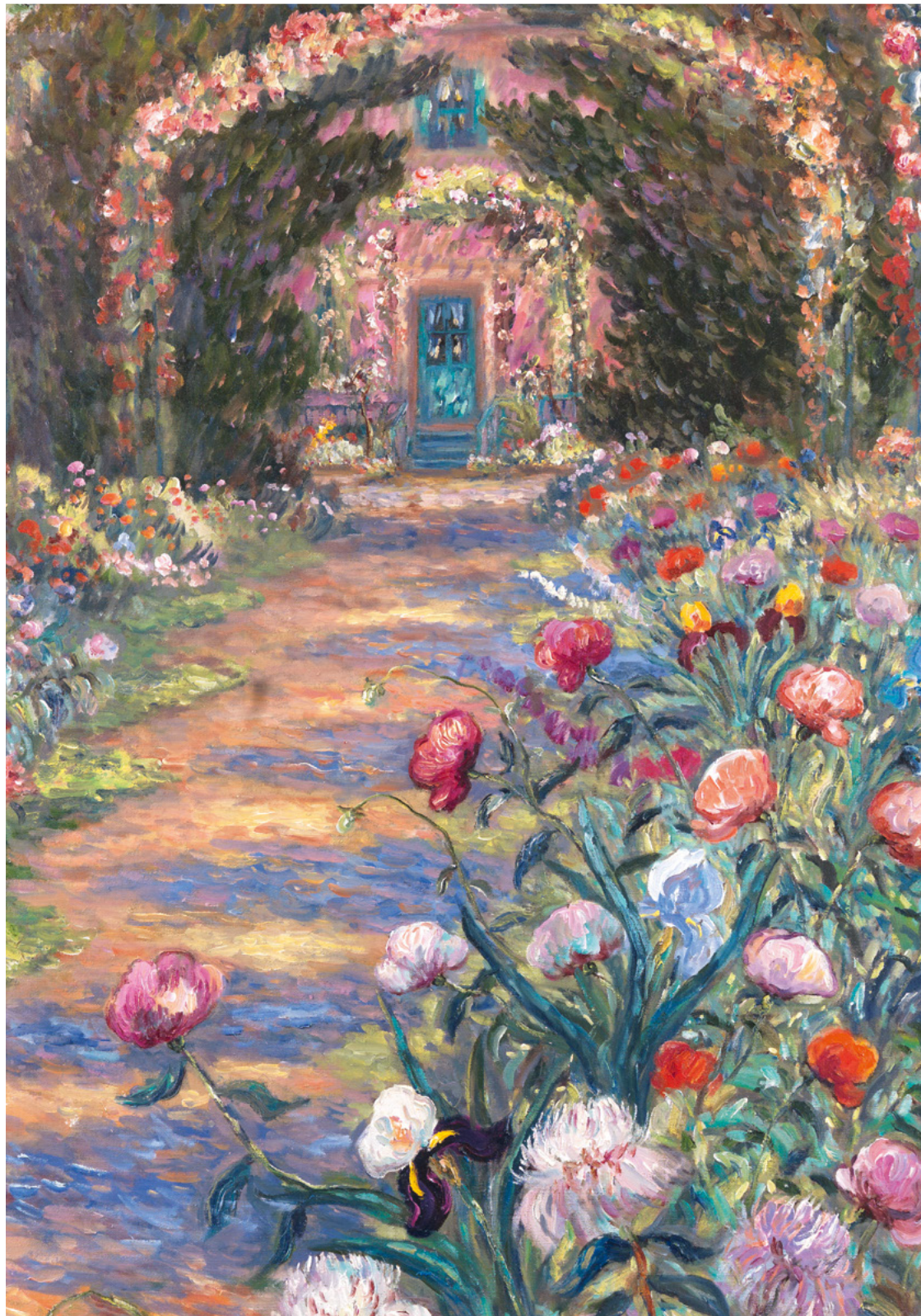


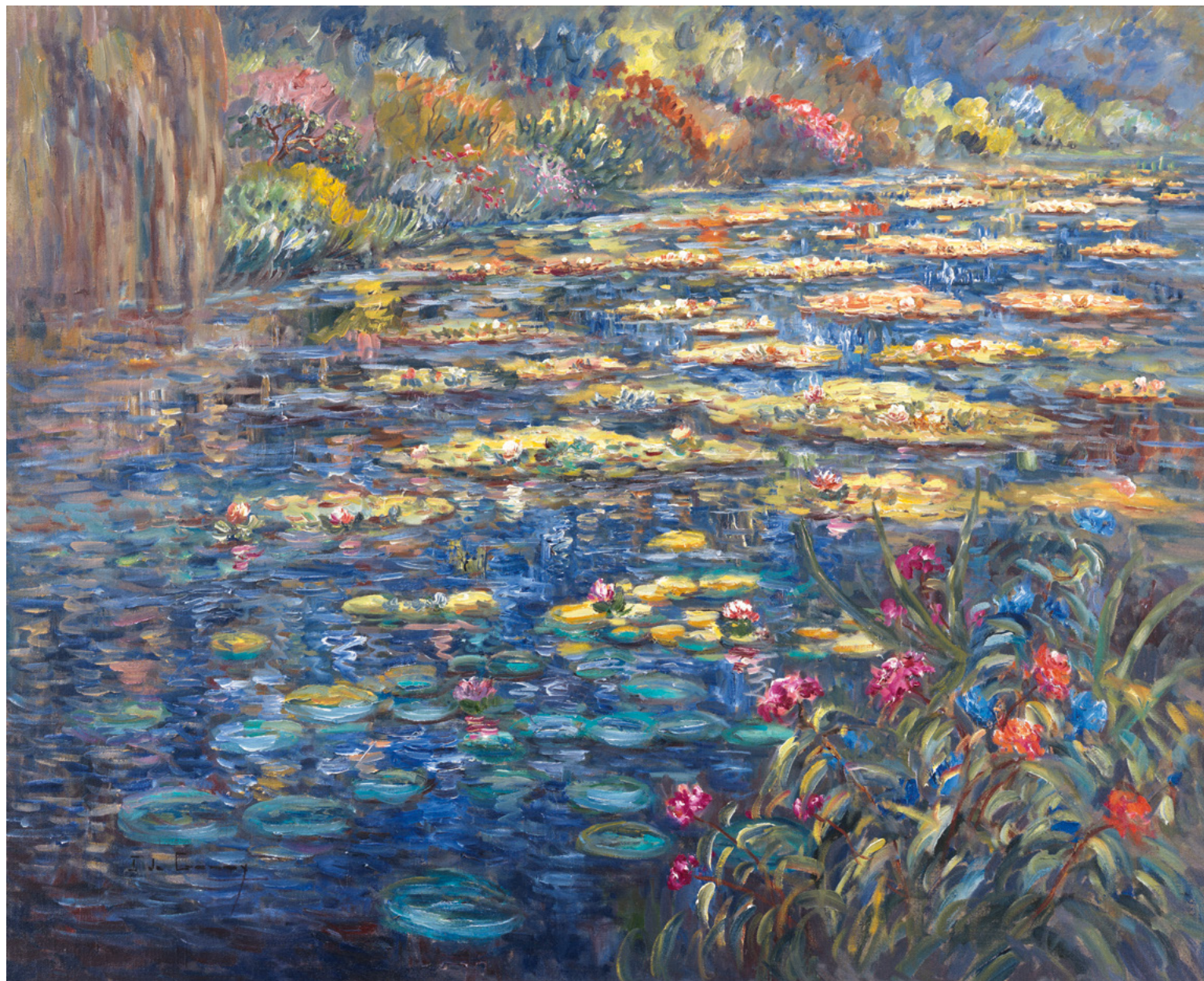
Début de Printemps à Giverny
 oil on canvas
 28 3/4 x 23 5/8 in.
 FG© 136979



Left | **Giverny 1** | oil on canvas | 76 3/4 x 38 3/16 in. | FG© 137012
 Right | **Giverny 2** | oil on canvas | 76 3/4 x 38 3/16 in. | FG© 137013

Left | **Giverny 3** | oil on canvas | 76 3/4 x 38 3/16 in. | FG© 137014
 Right | **Giverny 4** | oil on canvas | 76 3/4 x 38 3/16 in. | FG© 137015

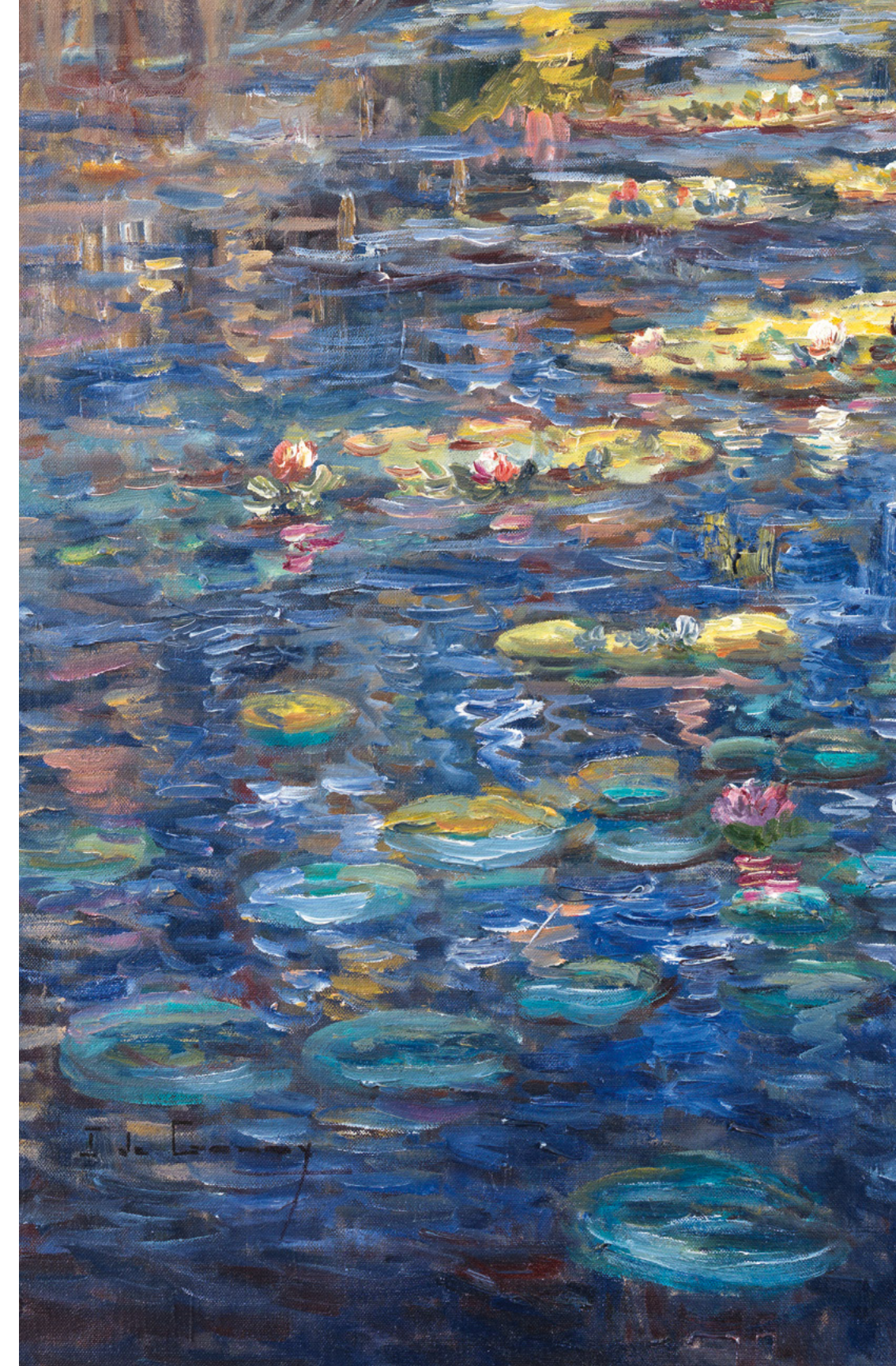




Nymphéas à Giverny | oil on canvas | 31 7/8 39 3/8 in. | FG© 137008

Isabelle has had numerous successful exhibitions throughout Europe. Her position as a member of the Artistes de Français and the presence of her works in prestigious collections across France and the rest of the world is an affirmation of her continually expanding reputation as one of the true, classic Impressionist painters.

Findlay Galleries have proudly represented Isabelle for over 23 years and looks forward to continuing to present you with more of her outstanding paintings. Become swept away in her majestic gardens, fairytale rivers and bridges, and become mesmerized in her color palettes that take a viewer to another reality.



I. J. Garay

Exhibitions

1985	Salle Siegfried	Conseil General de l’Essonne
1986	Galerie Sautreuil, Saint Wandrille Rancon	Galerie Marie-Jane Garoche, Paris
1987	Salon des Artistes Francais	1994 La Galerie, London
	Salon de Pontoise	The China Club, Hong Kong
	Societaire des Artistes Francais	Château de Vollore, Fondation La Fayette
1988	Galerie Wallet-Fouque, Amiens	1995 Galerie Marie-Jane Garoche, Paris
1989	Galerie du Moulin Saint Dominique,	Galerie du Chenil, Grainville, Ymauville
	Aumale Fondation Princesse Tran Chateau de Pinterville	Galerie Wallet Fouque, Amiens
1990	Galerie du Chenil, Grainville,-Ymauville	1996 La Galerie, London
	Galerie de la Vielle, Ville, Geneva	Musée de Jersey, Jersey
1991	Galerie Gericault, Rouen	1997 Galerie de la Vielle Ville, Geneva
	Salon de Mars, Paris	1997 Galerie de l’Estuaire, Le Havre
	“Art au Plaza” Plaza Athenée, Paris	Galerie Tuffier, Les Andelys
	Galerie Alain Letailleur, Paris	Château d’Etelan, Saint Maurice d’Etelan
1992	La Galerie, London	2002 Château de Vollore Musée
	Conseil General de Rouen	2006 La Galerie, London
	Galerie de la Vielle, Ville, Geneva	2018 Seoul, South Korea
1993	Galerie Katia Granoff, Honfleur	2019 Findlay Galleries, New York
	Selective Eye Gallery, Jersey	2020 Findlay Galleries, Palm Beach



FINDLAY GALLERIES

For further information and pricing of
these artworks please contact the gallery:

Palm Beach

561.655.2090

palmbeach@findlayart.com

165 Worth Avenue

Palm Beach, Florida 33480

New York

212.421.5390

newyork@findlayart.com

32 East 57th Street, 2nd Floor

New York, New York 10022

WWW.FINDLAYGALLERIES.COM