

The background of the entire page is a complex, abstract artwork. It features a dense composition of brushstrokes and hand-drawn elements. Dominating the scene are several large, concentric spirals or circular patterns, rendered in shades of blue, yellow, and black. These spirals are interspersed with various other marks, including straight lines, dots, and smaller, more intricate circular forms. The overall effect is one of dynamic energy and layered texture, typical of a mixed-media or gestural drawing style.

FINDLAY GALLERIES

WORKS ON PAPER

Prints - Multiples - Watercolors - Gouaches - Lithographs



ART

FINDLAY

EST. 1870

724 Fifth Avenue, 7th Floor

New York, NY 10019

WWW.FINDLAYGALLERIES.COM

WORKS ON PAPER

Prints - Multiples - Watercolors - Gouaches - Lithographs

COVER: Gordon Onslow Ford (1912-2003)

Untitled, circa 1965

gouache on paper | 30 x 22 1/4 in. | FG©139315

Copyright © 2019, Wally Findlay Galleries International Inc. All rights reserved. No part of the images or text in this catalogue may be duplicated without permission of Findlay Galleries. Prices and availability of artwork featured in this catalogue are subject to change without notice.



Byron Browne (1907-1961)
King and Queen, 1952
casein tempera on paper | 26 x 20 in. | FG©206449

R LANDFIELD

Findlay Galleries is pleased to offer a glimpse into their considerable collection of Works on Paper from modern masters Alexander Calder, Joan Miró, and Pablo Picasso to contemporary abstractionists Ronnie Landfield and Priscilla Heine. The exhibition, Works on Paper, features lithographs, multiples, prints, pen and ink drawings, watercolors, and gouaches.

MIRÓ

CALDER

HEINE

CHAGALL

D FINN

GORRITI

J DUFY

AÏZPIRI

Paper, traditionally made from plant and textile fibers, was invented in China in the 2nd century. The process for making paper traveled through the Islamic world to Europe and by the 13th Century was refined in paper mills where it later changed to a wood-based process that was mostly used for manuscripts and prints. Paper was both accessible and affordable allowing the artist to be free to experiment.

B BROWNE

GEN PAUL

BRAGUIN

F STELLA

JACK WRIGHT

LACHAISE

Paper was one of the first mediums used by artists to express their creativity and vision and often affords the viewer a glimpse into the artist's thoughts and experimental practices. We see many expressions of art born from the initial process of a sketch. At the same time, we also have works on paper that encompass the complete process of art-making, not only a new concept but a finished work.

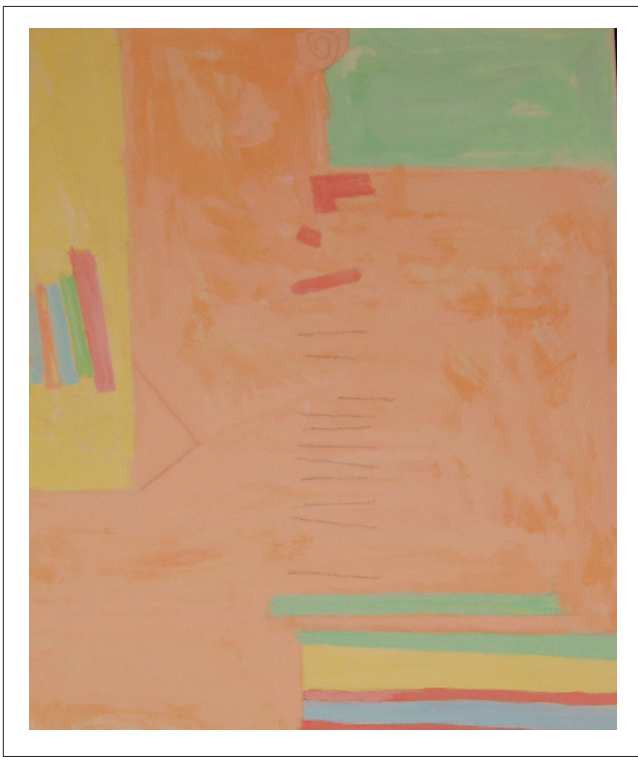
W JACKSON

MATISSE

L NELSON

DE SIMONE

Findlay Galleries' collection of Works on Paper showcases a vital and unique artistic genre unlike any other. Often the work is small and intimate, giving the viewer the opportunity to personally engage with each piece. We invite you to view this carefully curated collection of works that are not only historically significant but beautiful and inspiring.



Simeon Braguin (1907-1997)
02.0523C/365
watercolor on paper
14 x 11 in. | FG©135747



Fritz Rauh (1920-2011)
WC-0014
watercolor on paper | 19 1/2 x 27 in. | FG©138103



Ronnie Landfield (b.1947)

Across Time

acrylic on paper | 22 x 30 in. | FG©139042



Jean Dufy (1888-1964)

Bal populaire

gouache & watercolor on paper | 16 7/8 x 25 in. | FG©135725



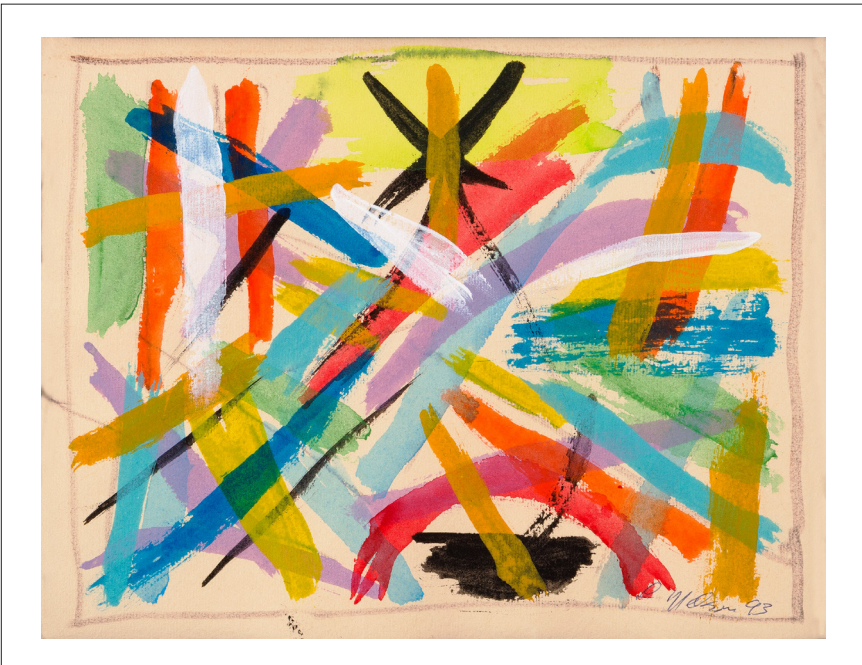
John Grillo (1917-2014)

Untitled Mosaic 6, 1952

watercolor on paper | 14 3/4 x 11 3/4 in. | FG©206404



Hugo Grenville (b. 1958)
Study for Reclining Nude with Poppies
pastel on paper | 19 x 21 1/2 in. | FG©133686



Leonard Nelson (1912-1993)
Untitled, 1993
watercolor on paper | 10 1/4 x 13 1/4 in. | FG©134312



Byron Browne (1907-1961)

Cryptic Garden, 1948

india ink on paper | 20x 26 in. | FG©204333



Jean Dufy (1888-1964)

Calèches et Cavaliers

gouache on paper | 12 1/2 x 19 in. | FG©138172



John Grillo (1917-2014)

Untitled 17, 1947

watercolor on paper | 23 1/2 x 18 in. | FG©206001

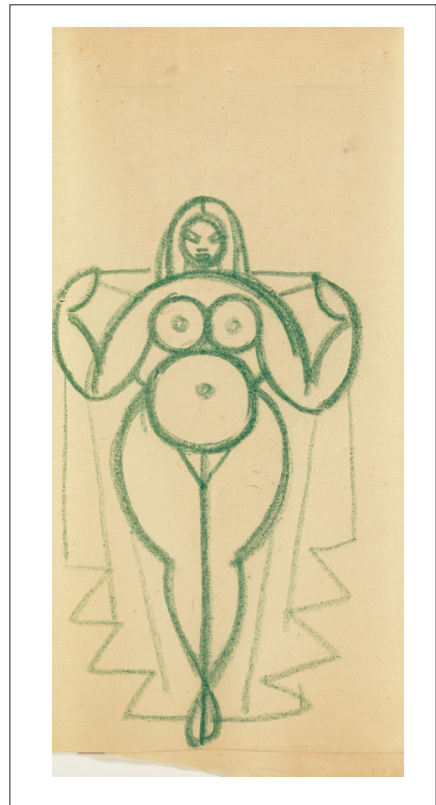


Leonard Edmondson (1916-2002)

Untitled Collage II, 1964

mixed media on paper

11 1/2 x 16 1/2 in. | FG©206676



Gaston Lachaise (1882-1935)

Geometric Nude with Veil, c. 1918-24

green crayon on thin, laid cream paper

11 7/8 x 5 3/4 in. | FG©137439



Alexander Calder (1898-1976)
Our Unfinished Revolution, 78/175
color lithograph | 21 7/8 x 29 5/8 in. | FG©136569



Byron Browne (1907-1961)
Ancient Map, 1955
casein tempera & India ink on paper | 20 x 26 in. | FG©206444



Gen Paul (1895-1975)

Edith Piaf au Moulin Rouge

gouache on paper | 19 11/16 x 25 9/16 | FG©135931



Priscilla Heine (b.1956)

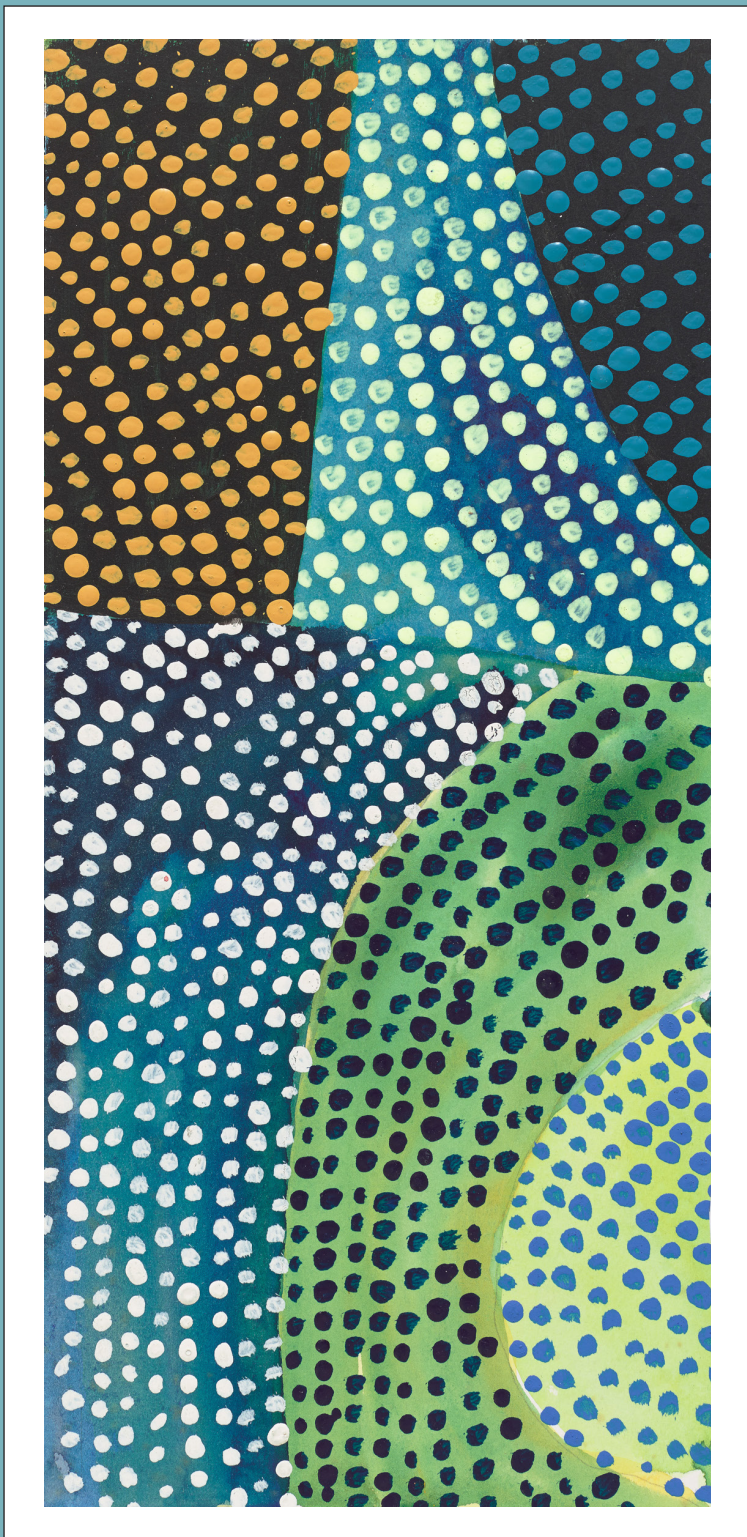
Saturated Light

oil on cotton rag paper | 25 1/2 x 40 in. | FG©137740

Priscilla Heine (b.1956)
Teatro Solis II
oil, gouache, pastel, pencil on paper
46 x 26 1/2 in. | FG©136399



Frank Lobdell (1921-2013)
Figure Drawing Series No. 37, 1974
ink, ballpoint pen, ink wash on paper
17 x 13 5/8 in. | FG©138710



John (Jack) C. Wright (1919-2003)

Untitled (8938), 1989

watercolor & acrylic on paper | 11 3/8 x 5 1/4 in. | FG©207439



Robert Richenburg (1917-2006)
Great Horn, 1950
oil on paper on 8 ply museum rag board
12 x 14 1/2 in. | FG©205219



Henri Matisse (1869-1954)
Au Coin D'Une Rue, 128/250, 1972
lithograph | 14 7/8 x 11 1/8 in. | FG©133224
