

MARY SIPP GREEN

Martha's Vineyard

FINDLAY GALLERIES

MARY SIPP GREEN

Martha's Vineyard

FINDLAY GALLERIES

724 FIFTH AVENUE, 7TH FLOOR, NEW YORK, NEW YORK 10019 • (212) 421 5390

165 WORTH AVENUE, PALM BEACH, FLORIDA 33480 • (561) 655 2090

WWW.FINDLAYGALLERIES.COM



Photo Credits: Sabine Von Falken

MARY SIPP GREEN

Mary Sipp Green’s trademark skies, with their layers of color have a perception beyond the merely visible. Sipp Green excels at depicting the land around her. It is not the tangible qualities that are highlighted in her paintings; it is the softly washed memories of a place. “When I began painting, I painted things as I saw them”, Mary explains, “very recognizable, very realistic...after eight years, I felt there was more to say about something than its surface reality...I wanted to get more from a painting, and I wanted to go deeper. I was searching for a new direction. This was about 1990.”

“I was walking in a meadow, one I had walked in many times before. It was a green field with a gray barn. That particular day, the field turned golden, with the flowering goldenrod and in the light, the barn became purple. From that experience I painted *Dusk on Goldenrod*, a painting I consider a transitional work.”

Mary’s father was an artist and had a studio in New York City where she drew and painted as a child. She attended FIT (the Fashion Institute of Technology in New York) where she studied apparel design. For years she had a clothing boutique in Greenwich Village. Eventually she moved with her family to the Berkshires. Mary said, “I decided I wanted to paint...I wanted to see what my paintings would look like, and I knew that I would be most regretful if I did not get that chance.”

Findlay Galleries is proud to represent this great American talent, Mary Sipp Green.

Martha's Vineyard

ARTIST STATEMENT



Last Light on Crackatuxet Cove

Oil on Linen
42 x 62 Inches
FG 138581





Salt Meadow

Oil on Linen
28 x 40 Inches
FG 138600

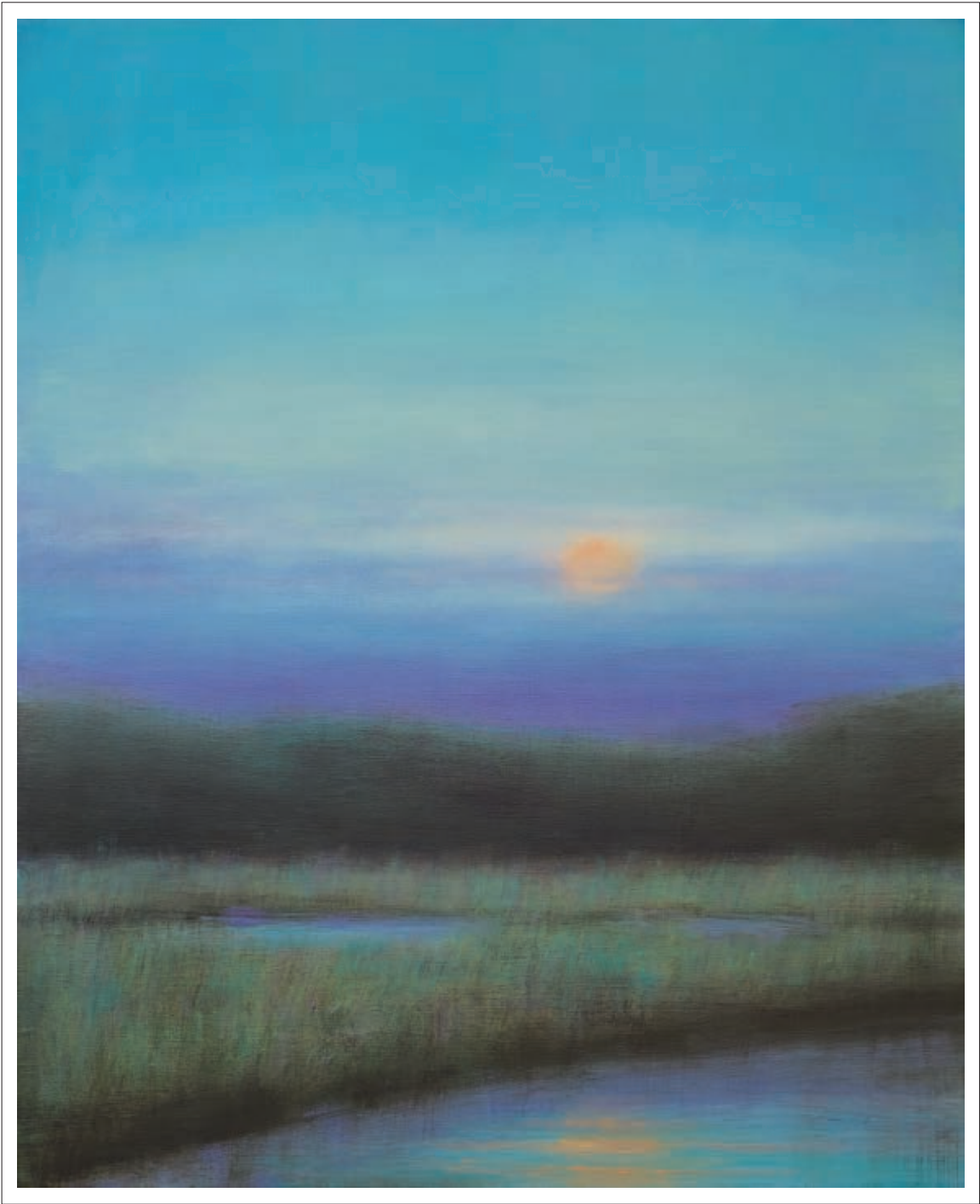
Dawn in Edgartown

Oil on Linen
40 x 56 Inches
FG 138573



Crab Creek at Sunset

Oil on Linen
44 x 36 Inches
FG 138571



MARY SIPP GREEN

*Crescent Moon Over
Farm Field*

Oil on Linen
32 x 60 Inches
FG 138572

17



MY SIPP GREEN 15



Morning Light on South Shore

Oil on Linen
46 x 48 Inches
FG 138601



Evening Cast

Oil on Linen
9 x 11 Inches
FG 138576



Lights Along the River

Oil on Linen
12 x 14 Inches
FG 138582



Path in the Meadow

Oil on Panel
15 x 16 1/2 Inches
FG 138586



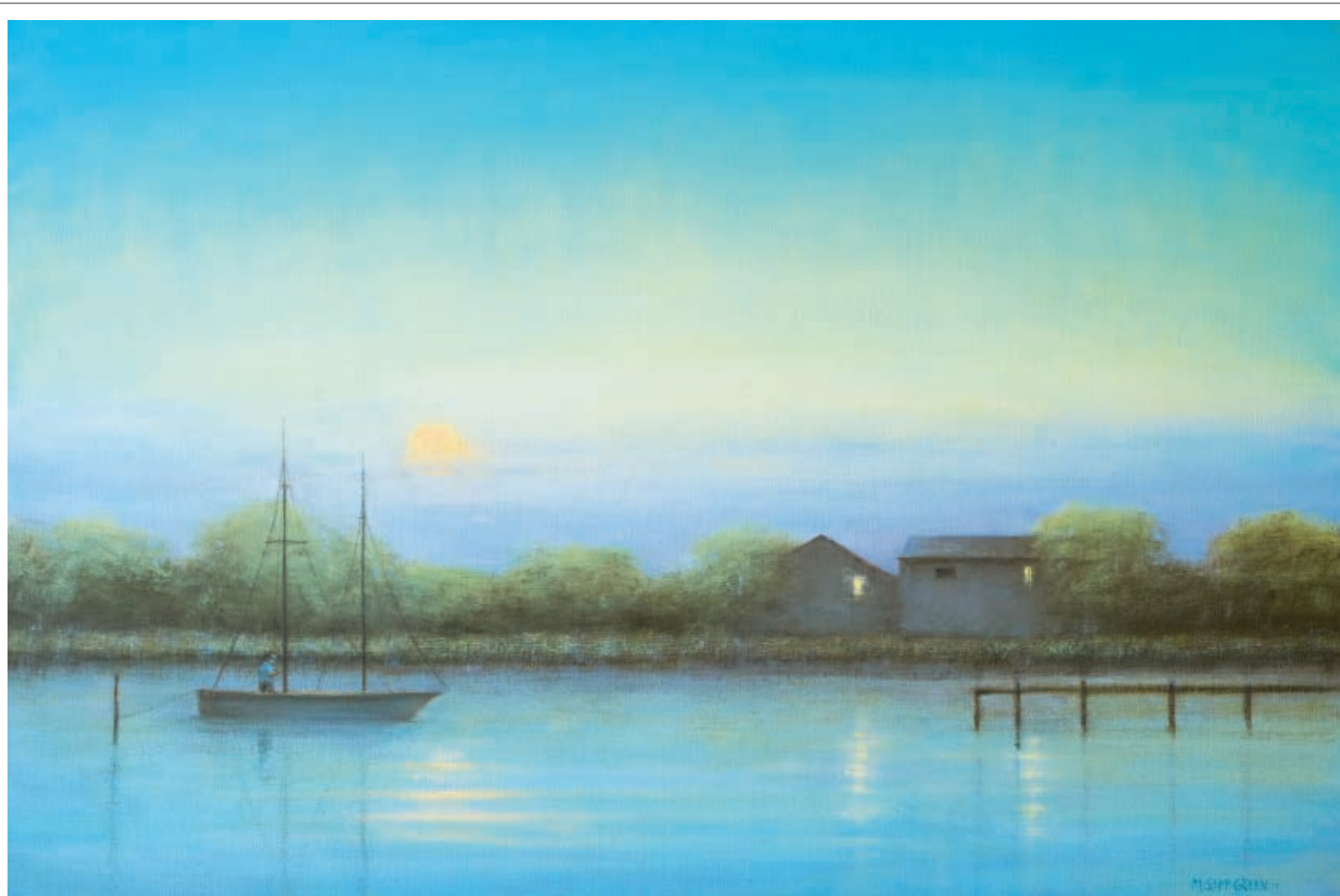
First Light in Edgartown

Oil on Linen
6 x 9 Inches
FG 138577

End of Day on Martha's Vineyard

Oil on Linen
52 x 52 Inches
FG 138575





Sunset in Edgartown

Oil on Linen

36 x 54 Inches

FG 138406



Island Twilight

Oil on Linen

38 x 46 Inches

FG 138579



Cover: *Menemsha*

Oil on Linen

30 x 64 Inches

FG 138585

Dutcher Dock

Oil on Linen
44 x 48 Inches
FG 138574



MARY SIPP GREEN



Wild Mallow in Chilmark

Oil on Linen

36 x 48 Inches

FG 138404



Meadow on the North Shore

Oil on Linen

40 x 48 Inches

FG 138584

Vineyard Haven at Sunset

Oil on Linen
46 x 48 Inches
FG 138590



Last Light

Oil on Linen
38 x 56 Inches
FG 136074





Makonikey at Sunset

Oil on Panel
9 1/2 x 12 1/2 Inches
FG 138583



Quiet Morning in Makonikey

Oil on Panel
9 x 12 1/2 Inches
FG 138587



Road Through Squibnocket

Oil on Panel
9 1/2 x 12 1/4 Inches
FG 138588



*Full Moon Rising
Over Keith Farm*

Oil on Panel
8 x 11 Inches
FG 138578

Summer Twilight in West Chop

Oil on Linen
36 x 50 Inches
FG 138405



Selected Exhibitions

2018	Findlay Galleries, New York, NY, Solo Exhibition, Martha's Vineyard
2016	Findlay Galleries, Palm Beach, Solo Exhibition, Les Couleurs de la Lumière: Paris & Provence
2014	Findlay Galleries, Palm Beach, Solo Exhibition, Recent Works
2014	Findlay Galleries, New York, Solo Exhibition, The Poetic Landscape: Selected Paintings
2014	Butler Institute of American Art, Youngstown, OH, Recent Acquisitions: Butler Pastel Collection
2011	Findlay Galleries, New York, NY, Solo Exhibition, Texas Blues
2009	Findlay Galleries, Palm Beach, FL, Solo Exhibition, Poetic Twilight
2008	Findlay Galleries, Palm Beach, FL, Group Exhibition, First Collection
2007	Findlay Galleries, Palm Beach, FL, Solo Exhibition
2007	Findlay Galleries, New York, NY, Group Exhibition, Coloritura
2007	Findlay Galleries, New York, NY, Group Exhibition, A Century of Landscapes
2006	Findlay Galleries, New York, NY, Group Exhibition, Art for the Young Collector
2006	Findlay Galleries, Palm Beach, FL, Group Exhibition, Works on Paper
2005	Findlay Galleries, Palm Beach, FL, Two Person Exhibition, Luminous Landscapes
2005	Findlay Galleries, New York, NY, Group Exhibition, Four Americans
2005	Springfield Museum of Fine Arts, Springfield, MA, Solo Exhibition, Selected Works 1990 -2004
2005	Arnot Art Museum Elmira, NY, Re-Presenting Representation
2004	Norman Rockwell Museum, Stockbridge, MA
	Berkshire Museum, Pittsfield, MA
2001	Butler Museum of Fine Art, Youngstown, OH
	The D'Amour Museum of Fine Art, Springfield, MA
1994	Norman Rockwell Museum, Stockbridge, MA
1992	National Academy Museum, New York, NY
1990	National Academy Museum, New York, NY
	National Academy Museum, New York, NY
	National Academy Museum, New York, NY



FINDLAY GALLERIES

For further information and pricing of these artworks please contact the gallery:

New York

724 Fifth Avenue, 7th floor
New York, NY 10019
+1 (212) 421 5390
newyork@findlayart.com

Palm Beach

165 Worth Avenue
Palm Beach, FL 33480
+1 (561) 655 2090
palmbeach@findlayart.com

www.findlaygalleries.com

Every Hour of the Light: The Paintings by Mary Sipp Green

Mary Sipp Green's new book, *Every Hour of the Light*, is a stunning monograph of her work, containing 85 paintings reproduced in full color, including recent works.

Based out of the Berkshire Hills of Massachusetts, Mary Sipp Green is an American Landscape painter who is superlative in her ability to transfix her viewers. Her atmospheric landscapes and seascapes are filled with emotions that transcend the pictorial plane.

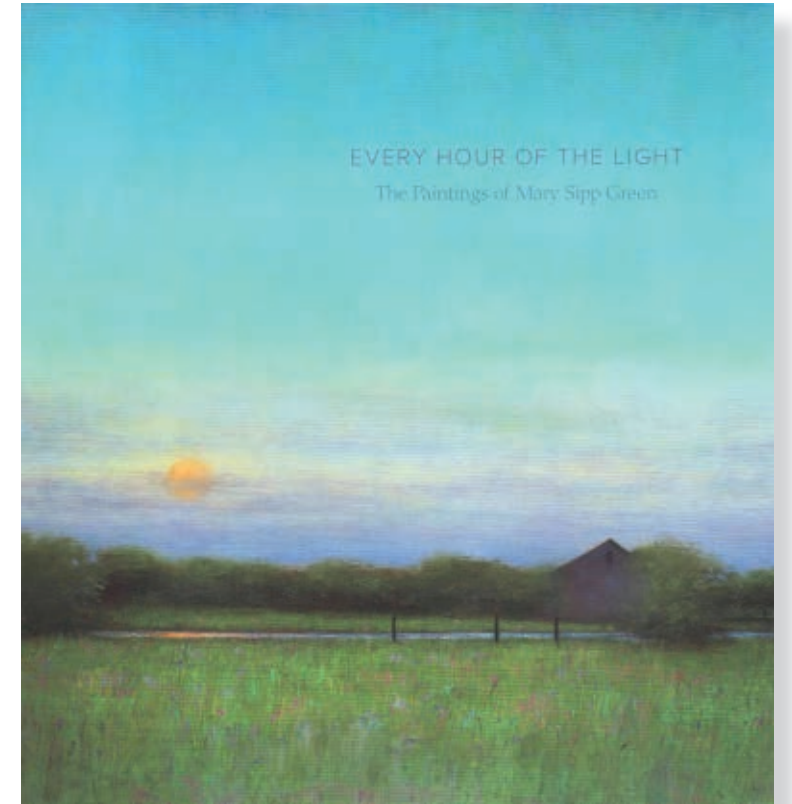
Intense, saturated jewel tones diffuse through her paintings as she captures her subjects during transitional times – the hazy light of dusk or a radiant sunrise illuminating a scene in vivid purple or orange. The viewer feels an immediate sense of place, as though they have been granted the privilege of looking through a window to a tableau at once public but also deeply personal and intimate. There's an ethereal, nuanced quality to her paintings, imparting a refined, inimitable serenity.

When describing the diffuse quality of her color, Sipp Green explains, "I use many layers of paint, allowing each to dry before the next is applied. Along the way, the surface of the paint is often refigured in unpredictable ways, and there is much that has to be scraped, sanded, destroyed and reapplied before the essence of a place, its mood and atmosphere finally emerges onto the canvas."

Sipp Green states, "While my preferred medium has always been oil on linen, my methods, techniques, and aesthetic aims have all undergone significant transformations since I first began. I learned my craft in the studio, painting still-lives and portraits, as well as landscapes drawn directly from nature. Over time, I became increasingly engaged with more abstract and spiritual aspects of the landscape form and I began to pursue a less representational, more expressive style."

Mary Sipp Green's new book
available for purchase at:

www.amazon.com



All images and work herein © Findlay Galleries and Mary Sipp Green. No reproduction or use in any form without express written permission from the artist. All rights reserved.