

The background of the entire image is a reproduction of a painting by Isabelle de Ganay. It depicts a lush garden scene. In the foreground, there is a pond with several lily pads and small pink flowers. A small, arched bridge crosses the pond in the middle ground. To the right, a large, tall tree with dense foliage stands prominently. The background shows more trees and a soft, hazy sky. The overall style is impressionistic, with visible brushstrokes and a rich, vibrant color palette.

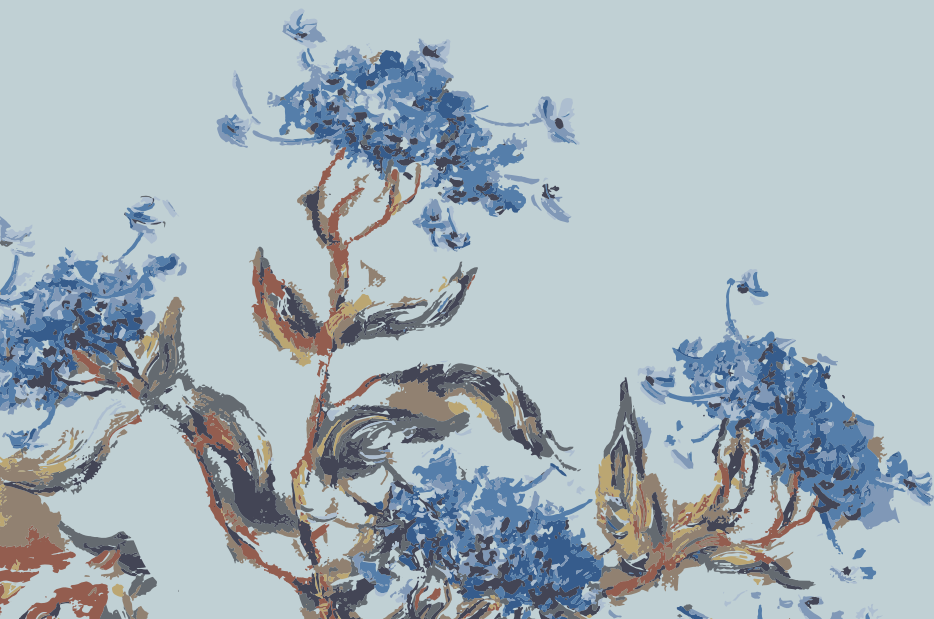
WALLY FINDLAY GALLERIES

# ISABELLE DE GANAY

*Maître de l'École de Rouen*

# ISABELLE DE GANAY

*Maître de l'École de Rouen*





ISABELLE DE GANAY was born in Rouen in 1960. In Rouen she discovered the same magic of the Normandy landscape that inspired the great names in Impressionism - Claude Monet, Pierre-Auguste Renoir and Sisley. Isabelle, brought up in a family who for generations adored art, was a sensitive child and instinctively drawn to beauty. Her great-grandmother, Countess Martine de Béhague, was one of the great art patrons of the 1920s. Her splendid collection included the works of Leonardo de Vinci, Titian, Albrecht Dürer and Monet; these works can now be enjoyed at the Louvre.

Art and nature very quickly occupied a predominant place in the life of young Isabelle and when she was only 15 years old, she was accepted to the famous Beaux-Arts in Rouen. This was an honor rarely bestowed on someone so young and serves as an early indication of her talent. In 1976, Isabelle met Albert Malet, the last Impressionist painter of the School of Rouen. Malet had been a student of Robert Antoine Pinchon and he would become Isabelle's mentor for the next ten years. Isabelle continued her formal education at the Academie Julian and L'École des Beaux-Arts in Paris, where she was first in her class. Isabelle returned to Rouen, and began exhibiting throughout France. Critics praised her unique style and more exhibitions followed for the artist. Malet, who had always been aware of her gift as an artist, designated Isabelle as his successor. Upon his death in 1986, Isabelle assumed his position as Maître de l'École de Rouen. Thus carrying the responsibility of passing on the knowledge and technique of one of the last French schools of art.

Isabelle is a true disciple of en plein air, which means painting outside in all weather conditions to more fully sense the influence of changes in the atmosphere, the vibrations of the air and the varying light. Therefore this technique allows her to seize and translate onto the canvas ephemeral moments. Never betraying the spirit of her work Isabelle can be found, often with her students, traveling France looking for the light which illuminates her canvases dense with warm colors.



# ISABELLE DE GANAY

*Maître de l'École de Rouen*

EXHIBITION TO BENEFIT



ANNIVERSARY  
30<sup>TH</sup>

AMERICAN FRIENDS OF BLÉRANCOURT





# The American Friends of Blérancourt



In 1917 Anne Morgan, youngest daughter of Pierpont Morgan, returned to France, determined to bring aid to the war-torn civilian population. She managed to be sent as close as possible to the battlefield in Picardy, to Blérancourt, a little village dominated by the ruins of a chateau built by one of France's most prestigious 17th century architects, the Huguenot Salomon de Brosse. Only two gate houses and the fraction of a wing plus two monumental arches remained of the original structure, but Miss Morgan set to work and made it her base for an extraordinary campaign of humanitarian aid.

She was joined by a committee of volunteer women from both France and the U.S. and she worked closely with the American Field Service, of which Blérancourt was one of its key centers. After the war she and her volunteer workers rebuilt entire villages and brought doctors, nurses, teachers and agricultural experts from the U.S. to bring life to the devastated region. At the same time she bought the chateau and decided to turn Blérancourt into a museum of French-American history. The collections represent five centuries of Franco-American relations. The success of Anne Morgan's efforts has made her a legend in Picardy. In 1931 she gave the chateau and its collections to the French government.

In 1985 the American Friends of Blérancourt Inc. was founded by Baroness Bernard d'Anglejan Chatillon, who has been working tirelessly with President Mrs. Jean-Paul Anglès to raise funds for the museum's expansion. In 1989 the AFB completed a first addition, the creation of the Florence Gould Pavilion. The museum is currently closed for construction work on a large new extension, designed to double the exhibition space. The American Friends are also responsible for the creation of several gardens and an arboretum of American trees on the museum grounds. These remain open to the public as are the two newly-restored gatehouses, the Anne Morgan Pavilion in which Anne Morgan lived and the Bibliothèque Pavilion which houses the library.

The museum will reopen in October 2016.



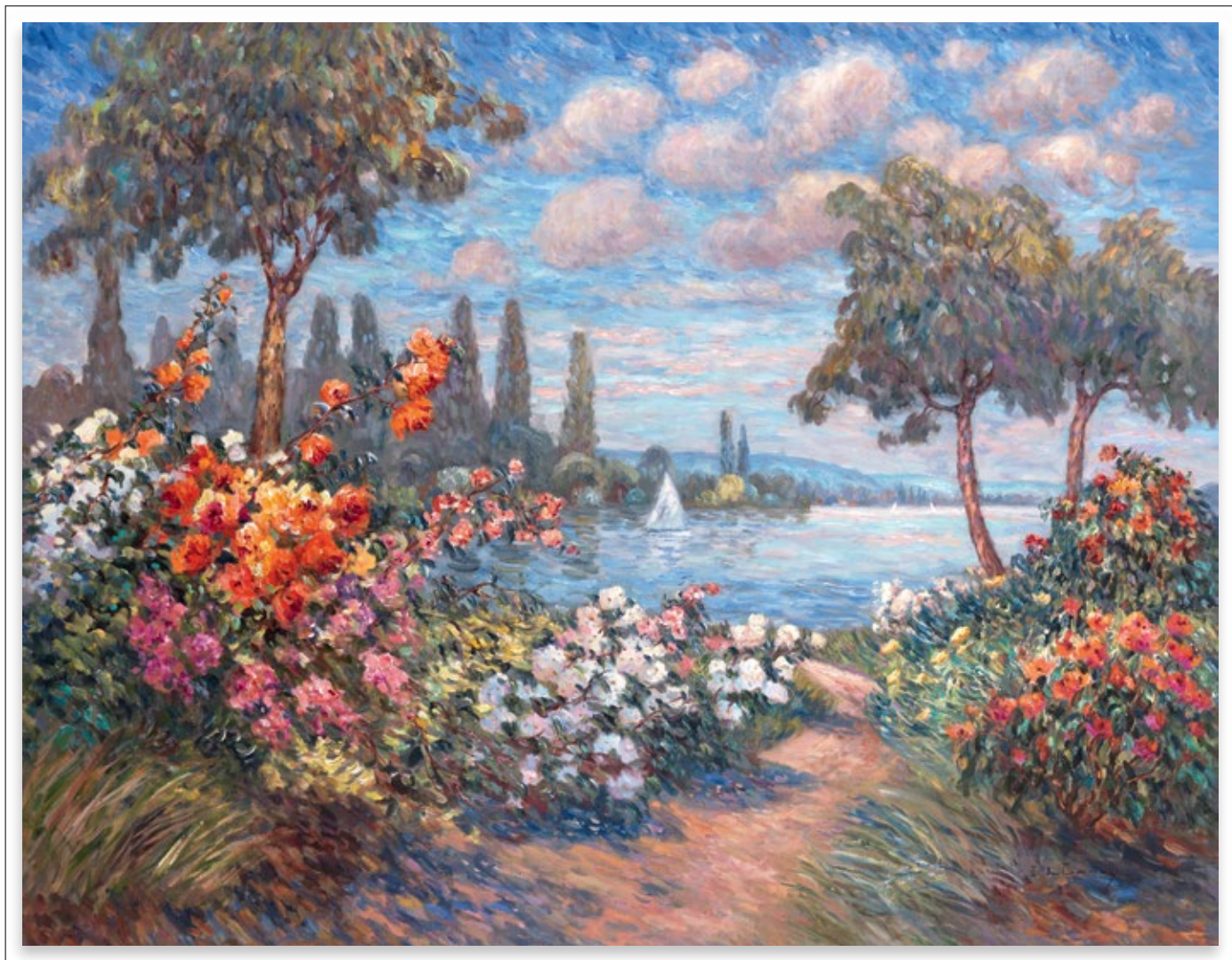


*Le Pont de Claude Monet* · oil on canvas · 76 <sup>3</sup>/<sub>4</sub> x 51 <sup>3</sup>/<sub>16</sub> inches · WFG© 137016

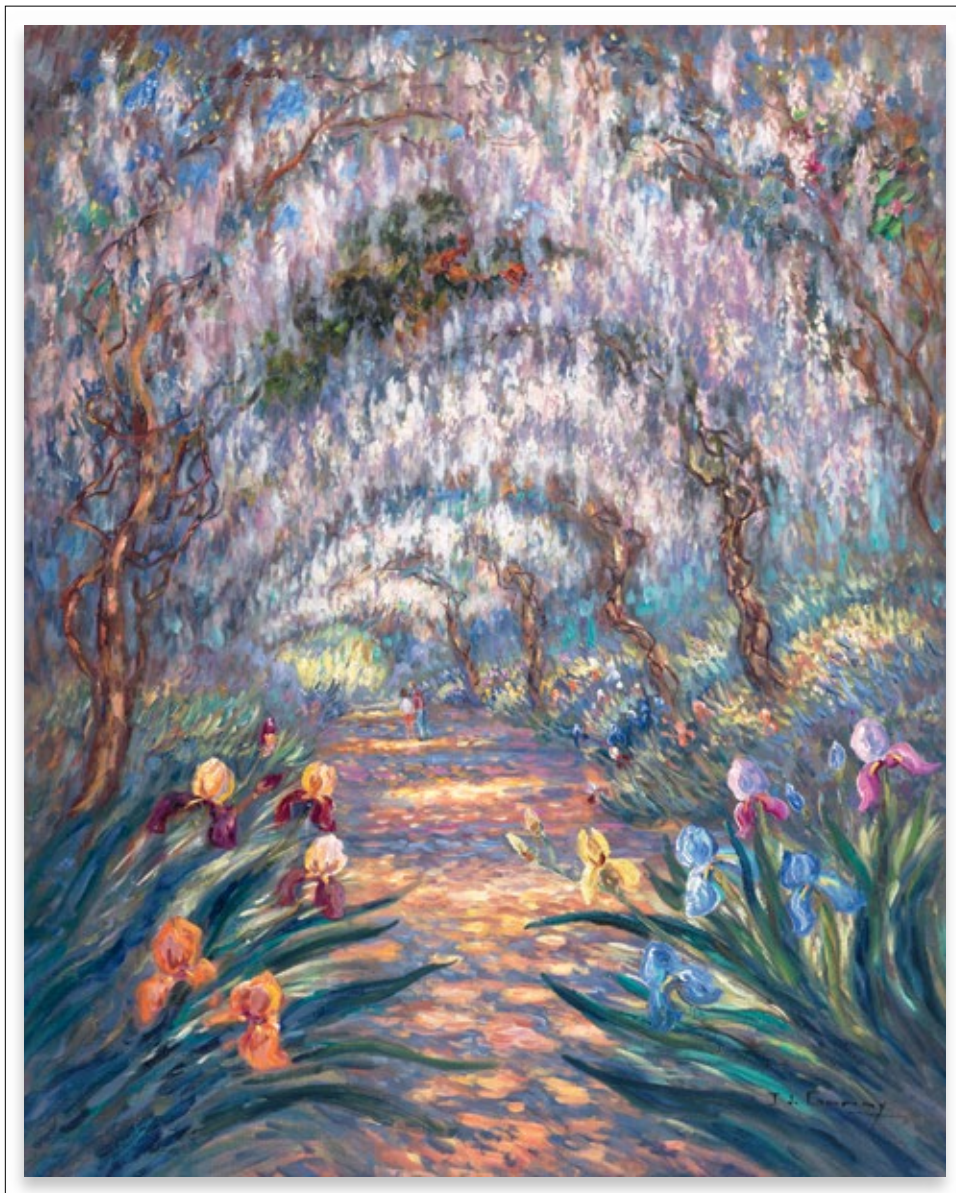


FOUR PANEL SCREEN • *Giverny* • oil on canvas • 76 <sup>3</sup>/<sub>4</sub> x 152 <sup>3</sup>/<sub>4</sub> inches • WFG© 137012



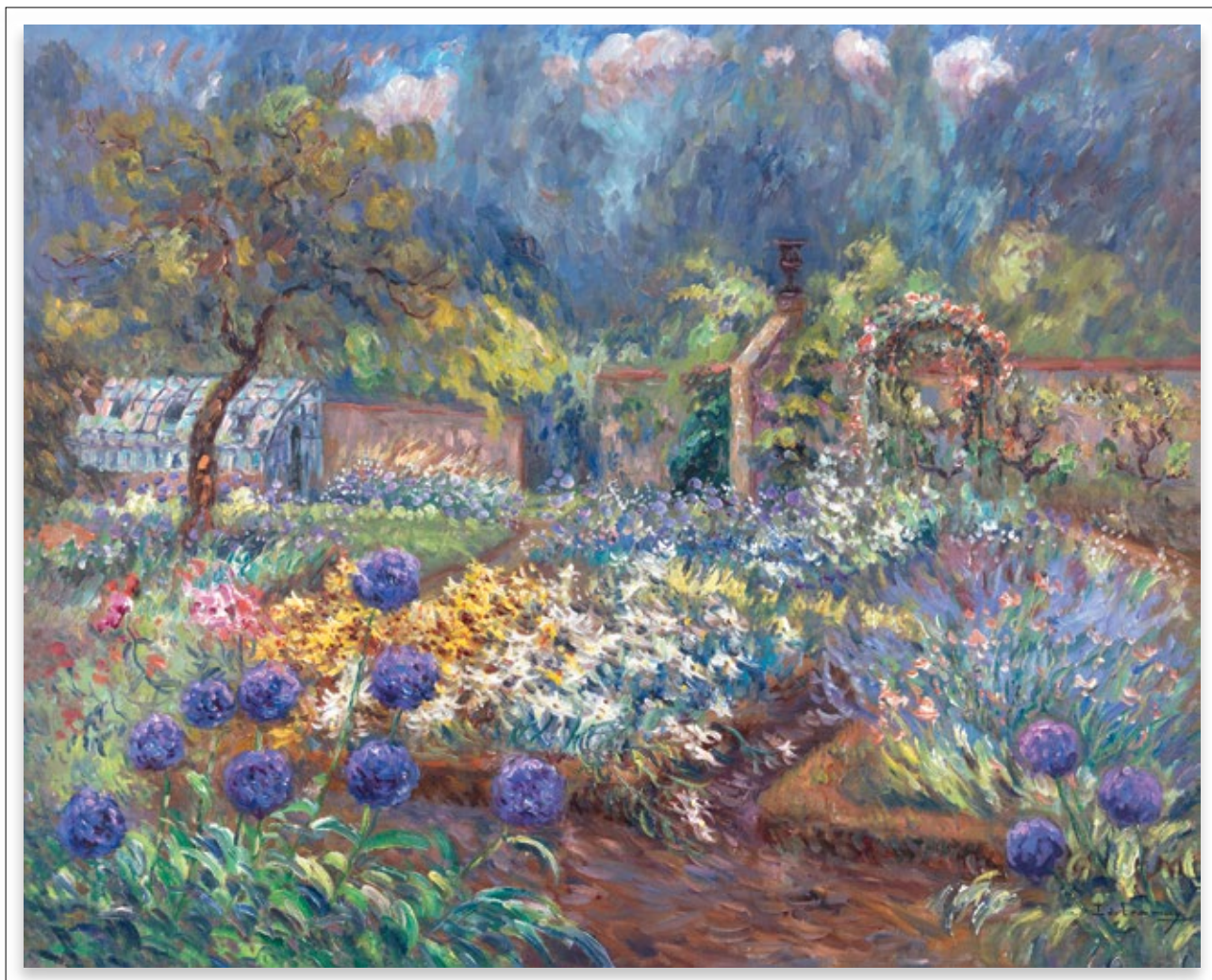


*Les Voiliers vers Duclair* • oil on canvas • 44 <sup>7</sup>/<sub>8</sub> x 57 <sup>1</sup>/<sub>2</sub> inches • WFG© 137011



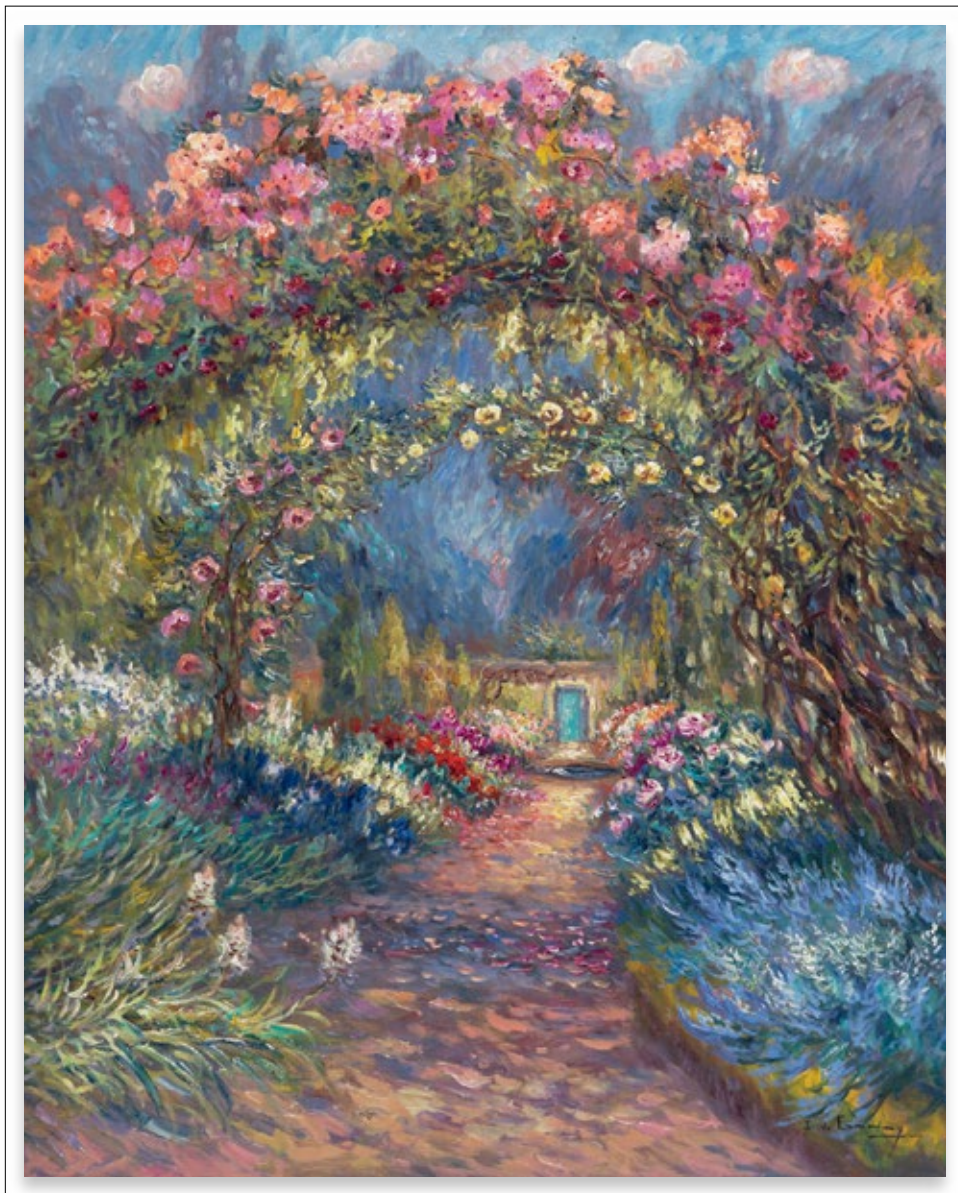
*Promenade sous les Glycines* · oil on canvas · 39 <sup>3</sup>/<sub>8</sub> x 31 <sup>7</sup>/<sub>8</sub> inches · WFG© 137010



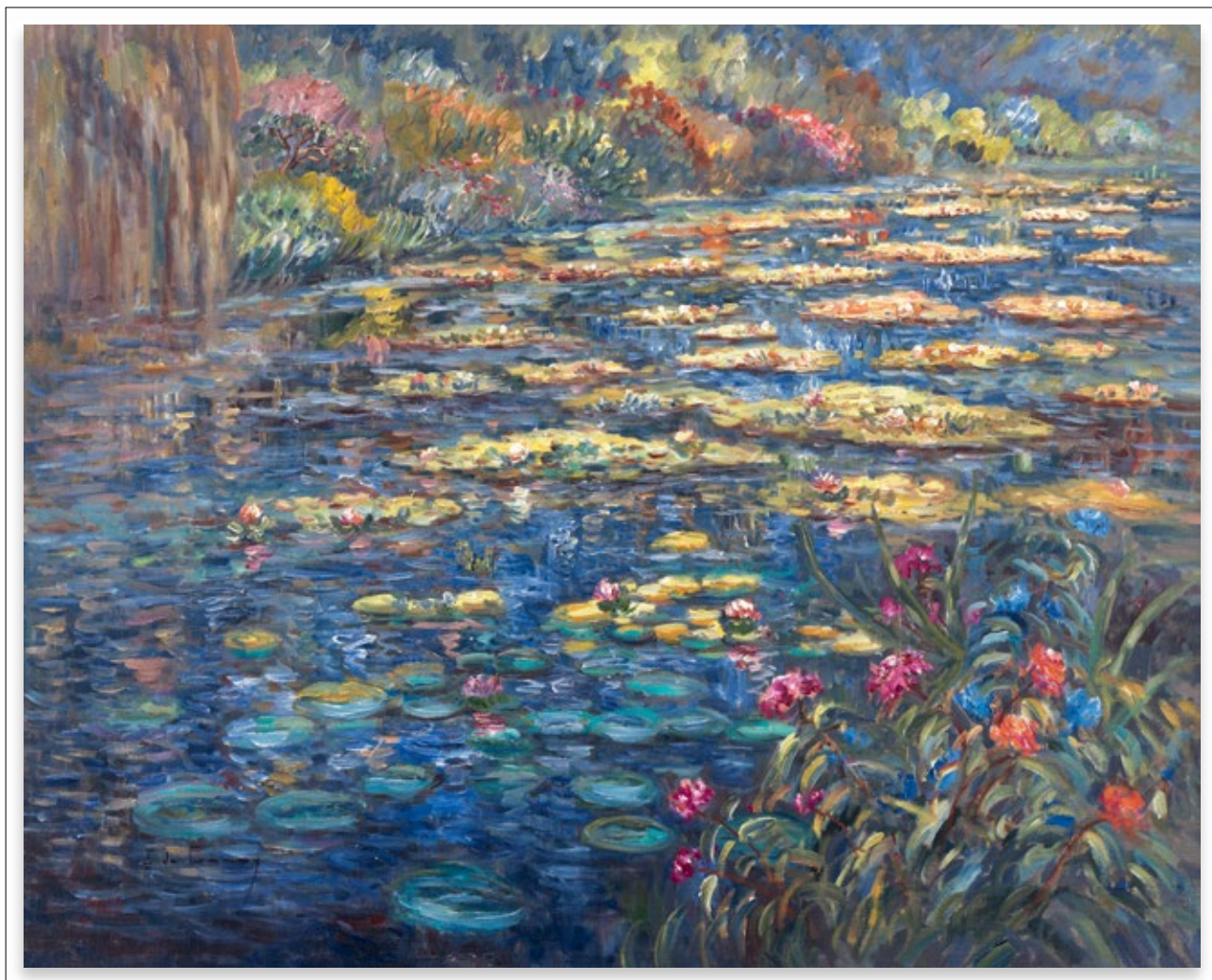


*Serre de Saint Jean de Beauregard* • oil on canvas • 39 <sup>3</sup>/<sub>8</sub> x 31 <sup>7</sup>/<sub>8</sub> inches • WFG© I37041





*Roseraie de Saint Jean de Beauregard* • oil on canvas • 39 <sup>3</sup>/<sub>8</sub> x 31 <sup>7</sup>/<sub>8</sub> inches • WFG© 137009



*Nymphéas à Giverny* • oil on canvas • 31 <sup>7</sup>/<sub>8</sub> x 39 <sup>3</sup>/<sub>8</sub> inches • WFG© 137008





*Jardin en Normandie* • oil on canvas • 39 <sup>3</sup>/<sub>8</sub> x 31 <sup>7</sup>/<sub>8</sub> inches • WFG© 137007





*Anenemones et Mimosas* • oil on canvas • 31 <sup>7</sup>/<sub>8</sub> x 39 <sup>3</sup>/<sub>8</sub> inches • WFC© 137006



*La Maison de Claude Monet* • oil on canvas • 28 <sup>3</sup>/<sub>4</sub> x 36 <sup>1</sup>/<sub>4</sub> inches • WFG© 137002





*Vue de Chez Pierre Bonnard* · oil on canvas · 28 <sup>3</sup>/<sub>4</sub> x 36 <sup>1</sup>/<sub>4</sub> inches · WFG© 137001





*Fleurs à Cas Concos* • oil on canvas • 28 <sup>3</sup>/<sub>4</sub> x 36 <sup>1</sup>/<sub>4</sub> inches • WFG© 137000



*Seine à l'Automne* · oil on canvas · 36 <sup>1</sup>/<sub>4</sub> x 31 <sup>7</sup>/<sub>8</sub> inches · WFG© 136998





*Pivoines à Bagtelle* · oil on canvas · 36 <sup>1</sup>/<sub>4</sub> x 31 <sup>7</sup>/<sub>8</sub> inches · WFG© 136997



*Fleurs à Marjorque* · oil on canvas · 28 <sup>3</sup>/<sub>4</sub> x 36 <sup>1</sup>/<sub>4</sub> inches · WFG© 136996





*Jardin de Saint-Jean de Beauregard* · oil on canvas · 36 <sup>1</sup>/<sub>4</sub> x 28 <sup>3</sup>/<sub>4</sub> inches · WFC© I36994



*Montagne Sainte Victoire* · oil on canvas · 28 <sup>3</sup>/<sub>4</sub> x 36 <sup>1</sup>/<sub>4</sub> inches · WFG© 136993





*Vigne* • oil on canvas • 25 <sup>9</sup>/<sub>16</sub> x 31 <sup>7</sup>/<sub>8</sub> inches • WFG© I36986



*Fin d'été* • oil on canvas • 31 <sup>7</sup>/<sub>8</sub> x 25 <sup>9</sup>/<sub>16</sub> inches • WFG© I36985



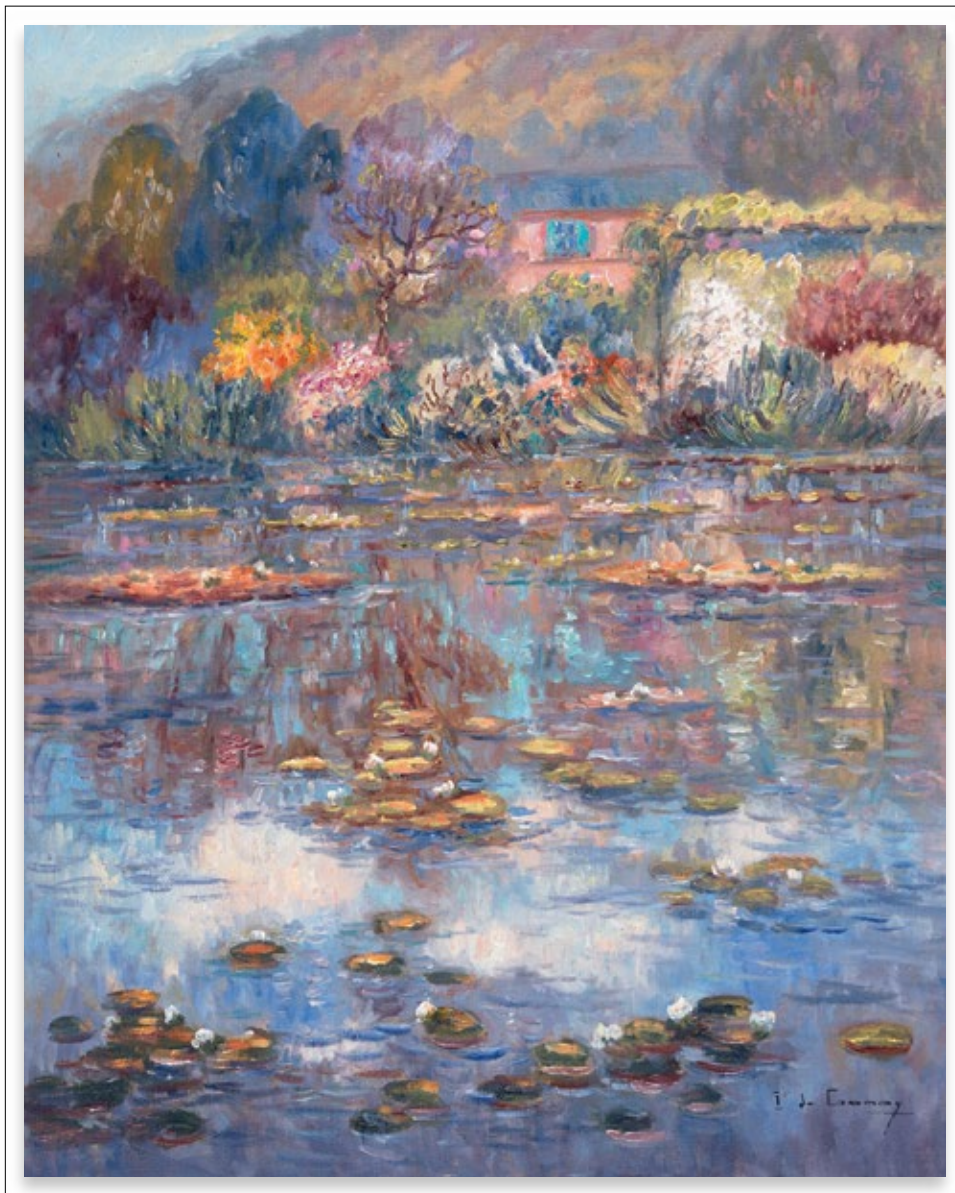


*Iris à Rouen* • oil on canvas • 25 <sup>9</sup>/<sub>16</sub> x 31 <sup>7</sup>/<sub>8</sub> inches • WFG© I36982

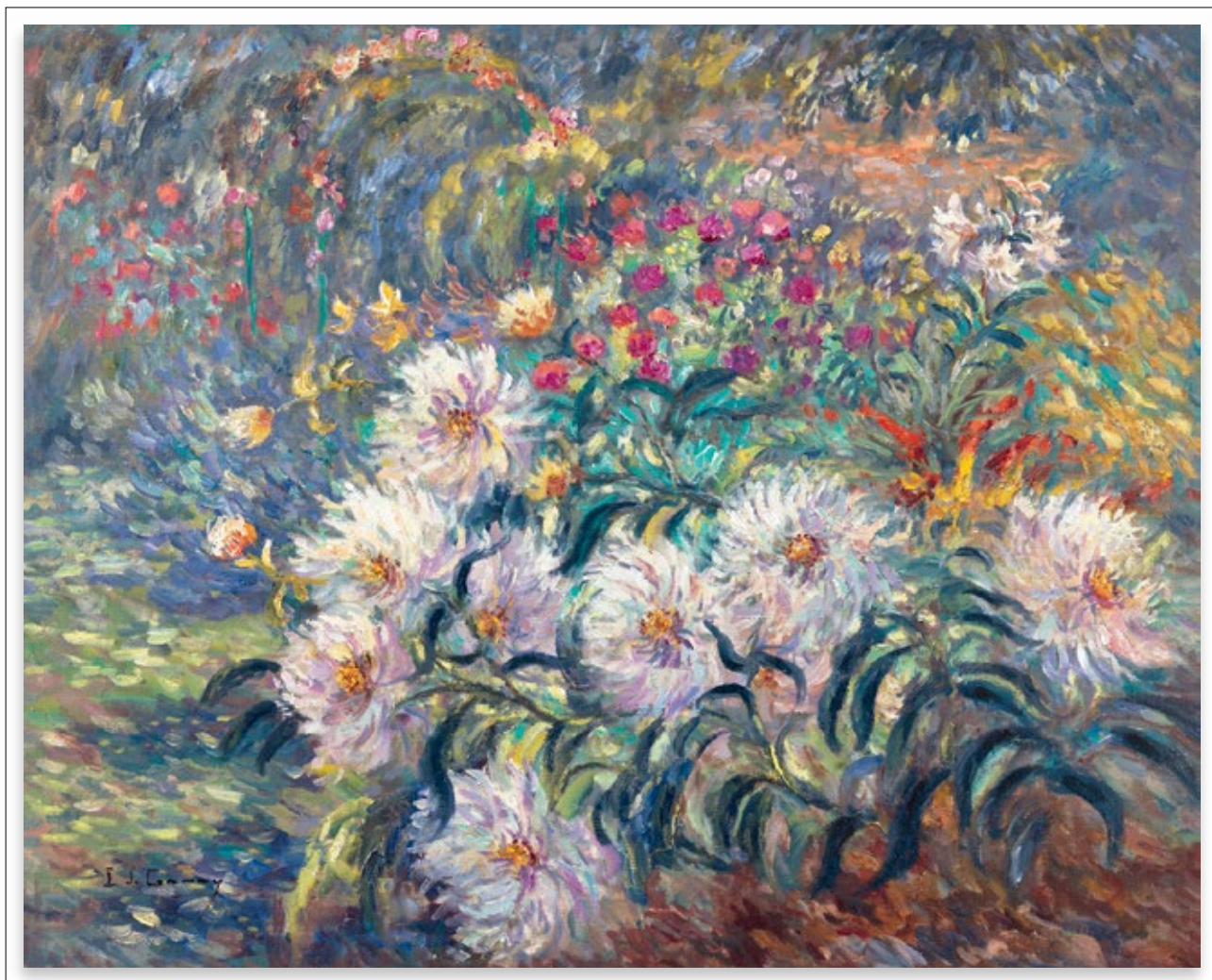


*Jeté de Dahlias* • oil on canvas • 28 <sup>3</sup>/<sub>4</sub> x 23 <sup>5</sup>/<sub>8</sub> inches • WFG© I36980





*Débuts de Printemps à Giverny* • oil on canvas • 28 <sup>3</sup>/<sub>4</sub> x 23 <sup>5</sup>/<sub>8</sub> inches • WFG© 136979



*Coin de Jardin* • oil on canvas • 23 <sup>5</sup>/<sub>8</sub> x 28 <sup>3</sup>/<sub>4</sub> inches • WFG© I36978





*Fin de Journée sur la Seine* • oil on canvas • 23 <sup>5</sup>/<sub>8</sub> x 28 <sup>3</sup>/<sub>4</sub> inches • WFG© I36976



*Bouquet Printanier* • oil on canvas • 21 <sup>5</sup>/<sub>8</sub> x 18 <sup>1</sup>/<sub>8</sub> inches • WFG© 136975



1985 Salle Siegfried

1986 Galerie Sautreuil, Saint Wandrille Rancon

1987 Salon des Artistes Francais  
Salon de Pontoise  
Societaire des Artistes Francais

1988 Gallerie Wallet Fouque, Amiens

1989 Galerie du Moulin Saint Dominique, Aumale  
Fondation Princesse Tran Chateau de Pinterville

1990 Galerie du Chenil, Grainville, Ymauville  
Galerie de la Vielle, Ville, Geneva

1991 Galerie Gericault, Rouen  
Salon de Mars, Paris  
"Art au Plaza" Plaza Athenee, Paris  
Galerie Alain Letailleur, Paris

1992 La Galerie, London  
Conseil General de Rouen  
Galerie de la Vielle, Ville, Geneva

1993 Galerie Katia Granoff, Honfleur  
Selective Eye Gallery, Jersey  
Conseil General de l'Essonne  
Galerie Marie Jane Garoche, Paris

1994 La Galerie, London  
The China Club, Hong Kong  
Chateau de Vollore, Fondation La Fayette

1995 Galerie Marie Jane Garoche, Paris  
Galerie du Chenil, Grainville, Ymauville  
Galerie Wallet Fouque, Amiens

1996 La Galerie, London  
Musee de Jersey, Jersey  
Galerie de la Vielle Ville, Geneva

1997 Galerie de l'Estuaire, Le Havre  
Galerie Tuffier, Les Andelys  
Chateau d'Etelan, Saint Maurice d'Etelan  
Wally Findlay Galleries, New York

1998 Wally Findlay Galleries, Palm Beach and New York

1999 Wally Findlay Galleries, Chicago & New York

2000 Wally Findlay Galleries, Palm Beach

2001 Wally Findlay Galleries, Palm Beach & New York

2002 Wally Findlay Galleries, East Hampton & Palm Beach

2003 Wally Findlay Galleries, New York

2005 Wally Findlay Galleries, Palm Beach

2006 La Galerie, London  
Wally Findlay Galleries, New York

2008 *The Enchanted Garden*  
Wally Findlay Galleries, Palm Beach  
*Classical Impressionism*  
Wally Findlay Galleries, New York & Palm Beach

2010 *Beyond the Moment*  
Wally Findlay Galleries, New York

2013 *Maître de l'École de Rouen*  
Wally Findlay Galleries, New York

2014 *20th Century Impressionist Landscape Paintings*  
Wally Findlay Galleries, Palm Beach  
*Maître de l'École de Rouen*  
Wally Findlay Galleries, New York & Palm Beach