

WALLY FINDLAY GALLERIES

The Iconic Horse

GALLERY COLLECTION OF EQUESTRIAN ART





The Iconic Horse

GALLERY COLLECTION OF EQUESTRIAN ART

Wally Findlay Galleries is proud to present *The Iconic Horse*, an exhibition which pays tribute to the enduring qualities of the horse made manifest in art. The horse is a physically majestic and culturally symbolic animal that has been revered throughout history. Horses have played an integral part in human civilization, through transportation, agricultural work, warfare, sport and pleasure. This exhibition aims to capture the beauty and spirit of these outstanding creatures.

Man has long depended on the horse in farming, transportation, war, religion, and exploration, and as a consequence we have a wonderfully rich legacy of horses depicted in art, especially in works from the 18th and 19th centuries. In contrast, modern art more often showcases the horse as a symbol of leisure - with scenes of jockeys and horse racing, gentlemen horseback riding in the ring or on the beach, and American cowboys riding out on the range. Through art one can see the changing cultural perspectives, artistic styles, and symbolic interpretations associated with the horse, a timeless and much-loved subject.

**Please join us at our Palm Beach Gallery
to view this eclectic exhibition.**





SAMUEL JOHN EGBERT JONES, BRITISH (1797 - 1861)

Groom with Gray Cob Hunter, 1828
London, England

oil on canvas | 17 x 21 inches | WFG© 135761



UNKNOWN/BRITISH (19TH CENTURY)

Lordship with Dark Bay and Grey
Norfolk, England

oil on canvas | 21 x 27 inches | WFG© 136325

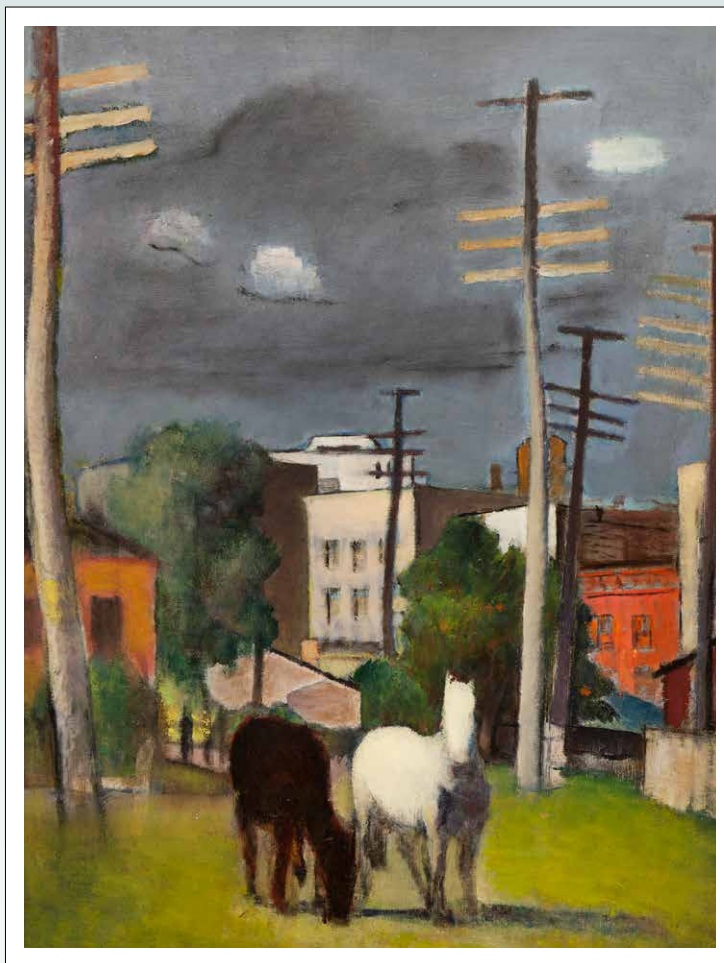


UNKNOWN/BRITISH (19TH CENTURY)

Lord with Dark Bay

oil on canvas | 21 x 27 inches | WFG© 136326





SIMKA SIMKHOVITCH, UKRAINIAN (1893 - 1949)

Early Morning in Connecticut, ca. 1940

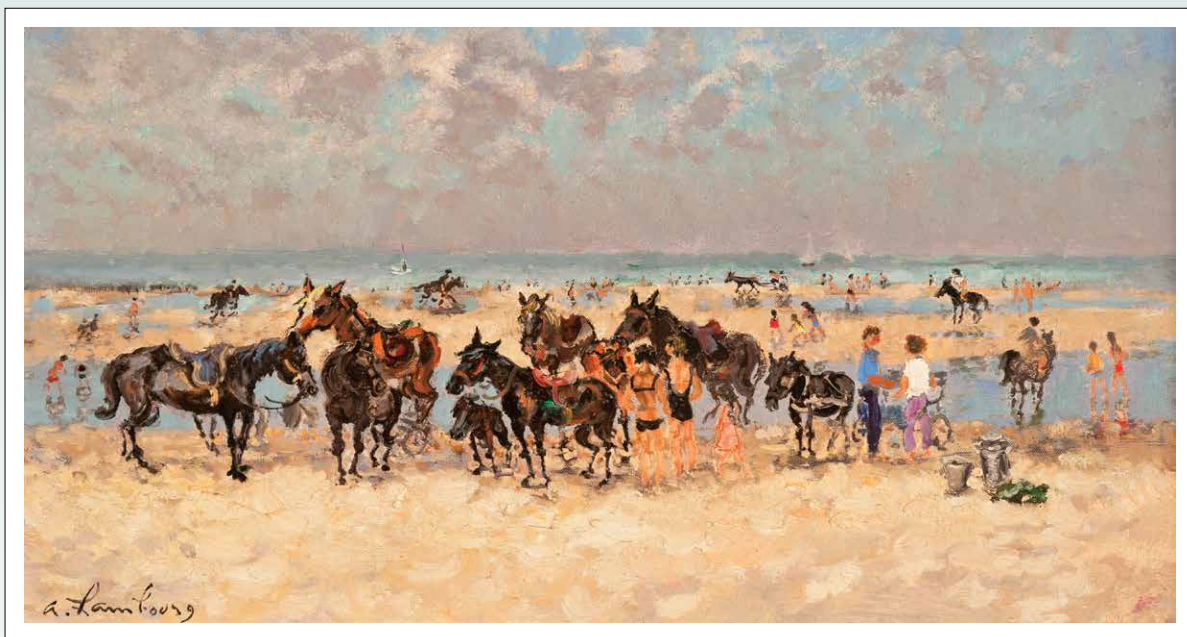
oil on board | 24 x 18 inches | WFG© 135833



JULES ANTOINE VOIRIN, FRENCH (1833 - 1898)

Rue Animée, 1880

oil on canvas | 8 1/2 x 10 1/2 inches | WFG© 131353



ANDRÉ HAMBOURG, FRENCH (1909 - 1999)

Les Petits Chevaux sur la Plage

oil on canvas | 14 ¹⁵/₁₆ x 18 ¹/₈ inches | WFG© 135839



UNKNOWN/BRITISH (19TH CENTURY)

Portrait of a Horse

oil on canvas | 24 ³/₄ x 32 inches | WFG© 136342



AFTER ANTOINE-LOUIS BARYE, FRENCH (1796 - 1895)

Jument et Son Poulain

bronze | 13 ³/₄ x 17 inches | WFG© 134216



LAURA E. CASSIDY, AMERICAN (20TH CENTURY)

Chestnut Stallion in Landscape

oil on canvas | 20 x 24 inches | WFG© 136071



BERNARD DE CLAVIÈRE, FRENCH (B. 1934)

Dant Vires Gloriam

oil on canvas | 51 ³/₁₆ x 31 ³/₁₆ inches | WFG© 133885





JOHN LEONE, AMERICAN (1929 - 2011)

Hounds and Horses

oil on panel | 36 x 24 inches | WFG© 128588



UNKNOWN/CONTINENTAL SCHOOL (19TH CENTURY)

A Gentleman with His Hunter and Greyhound, ca. 1850

oil on canvas | 28 ¹/₄ x 36 ¹/₂ inches | WFG© 133926



JOHN LEONE, AMERICAN (1929 - 2011)

Tracing of Hunt Scene

pencil on paper | 36 x 36 inches | WFG© 132880



ATTRIBUTED TO LAMBERT MARSHALL, BRITISH (1810 - 1870)

On the Trail

oil on canvas | 12 ¹/₂ x 14 ¹/₂ inches | WFG© 136324



JAMES WALSHAM BALDOCK, BRITISH (1822 - 1898)

The Hunt, 1855

oil on canvas | 26 x 36 inches | WFG© 135705





JOHN NOST SARTORIUS, BRITISH (1759 - 1828)

A Match at Newmarket, 1827
Suffolk, England

oil on canvas | 9 x 14 inches | WFG© 136070



JOHN LEONE, AMERICAN (1929 - 2011)

Tracing of Sockeyes

pencil on paper | 36 x 60 inches | WFG© 132879



CHARLES CAREY RUMSEY, AMERICAN (1879 - 1922)

Winning the Race

bronze with brown patina | 9 1/4 inches | WFG© 135342



THOMAS WEAVER, BRITISH (1774 - 1843)

Grouse, 1823

oil on canvas | 26 x 36 inches | WFG© 136323



GEN PAUL, FRENCH (1895 - 1975)

Polo, 1970

gouache on paper | 19 ³/₄ x 25 ¹/₂ inches | WFG© 135808



LAURA E. CASSIDY, AMERICAN (20TH CENTURY)

Horse with Jockey Up

oil on canvas | 24 x 30 inches | WFG© 136073



JULIET CURSHAM, BRITISH (1960)

Horse and Jockey, 1989

bronze | 13 x 17 inches | WFG© 134840

For further information and pricing of these artworks please contact the gallery:

Palm Beach
+ 1 (561) 655 2090
palmbeach@wallyfindlay.com

Gallery Hours:
Monday | Saturday : 10 am | 6 pm

New York
+ 1 (212) 421 5390
newyork@wallyfindlay.com

Gallery Hours:
Tuesday | Saturday : 10 am | 6 pm