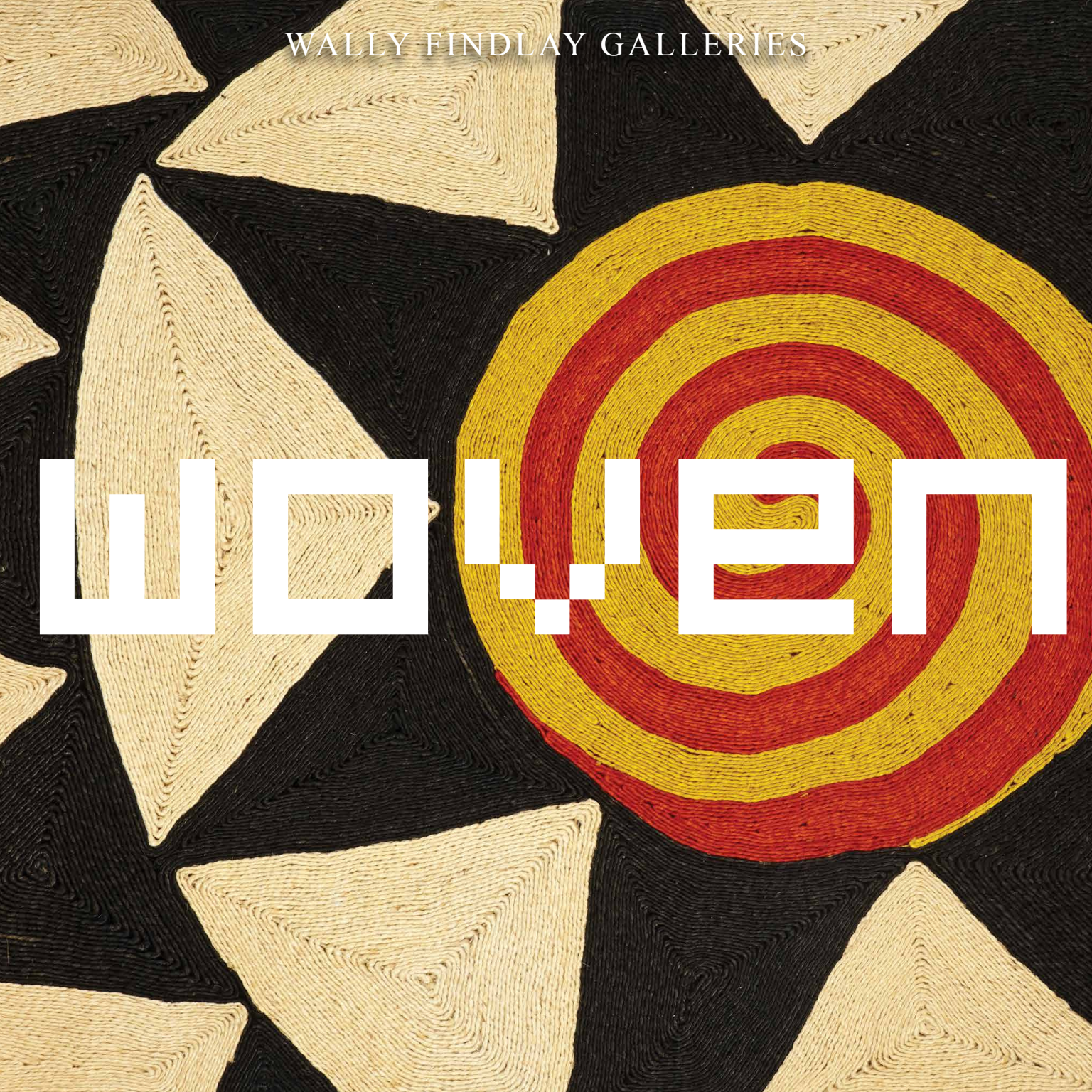


WALLY FINDLAY GALLERIES

W O R L D



WOVEN

The modern tapestry is a sought after statement piece, their functionality as a wall insulation combined with the great beauty and artistic qualities have given these artisan pieces an enduring charm. Having withstood the test of time, these statement pieces return to the spotlight as innovative and modern art.

Woven textiles have a long history dating back to the 3rd Century BC. In the Middle Ages, and the following Renaissance, tapestry truly came to life in Europe. Modern Masters Léger, Miró, Dufy and Picasso were some of the first modern artists to collaborate their designs to be translated into tapestries.

Wally Findlay Galleries is pleased to present WOVEN, a collection of tapestries that highlights the variety and unique beauty present in each tapestry.



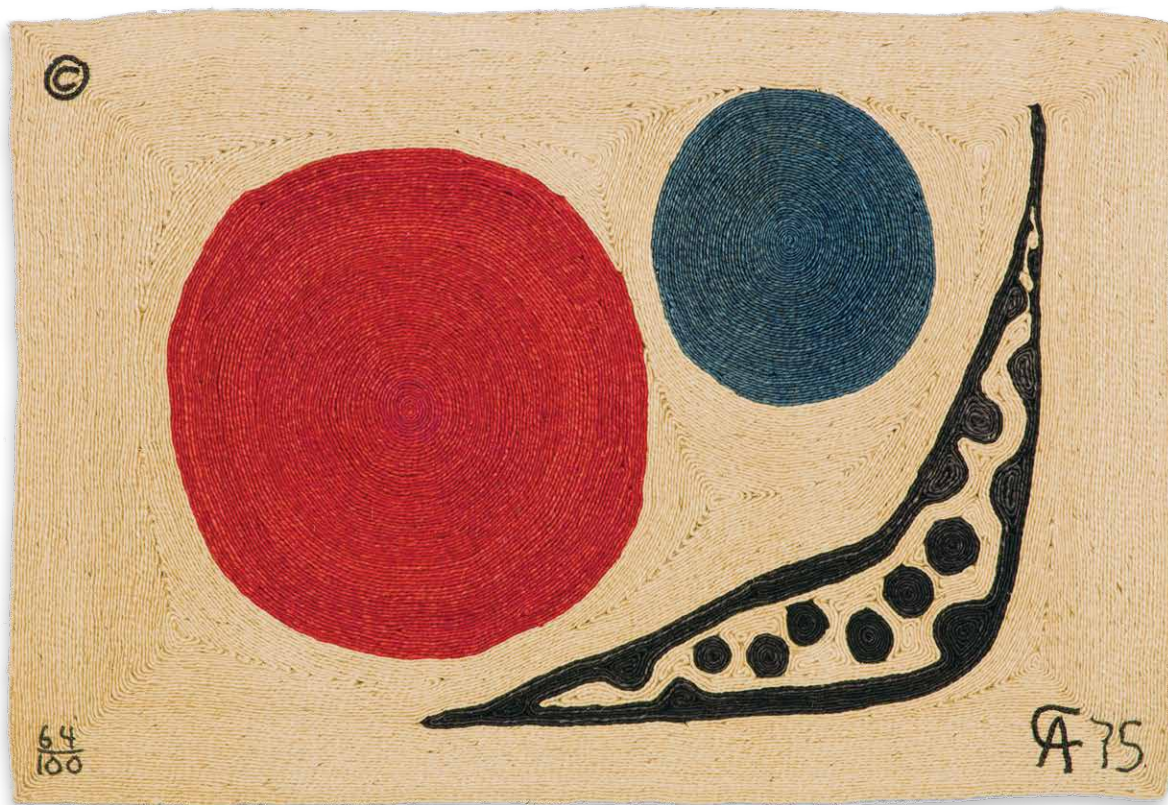
Robert INDIANA (b. 1928)
Chosen Love, 37/175, 1995 | hand-woven wool tapestry | 96 x 96 inches | 135558



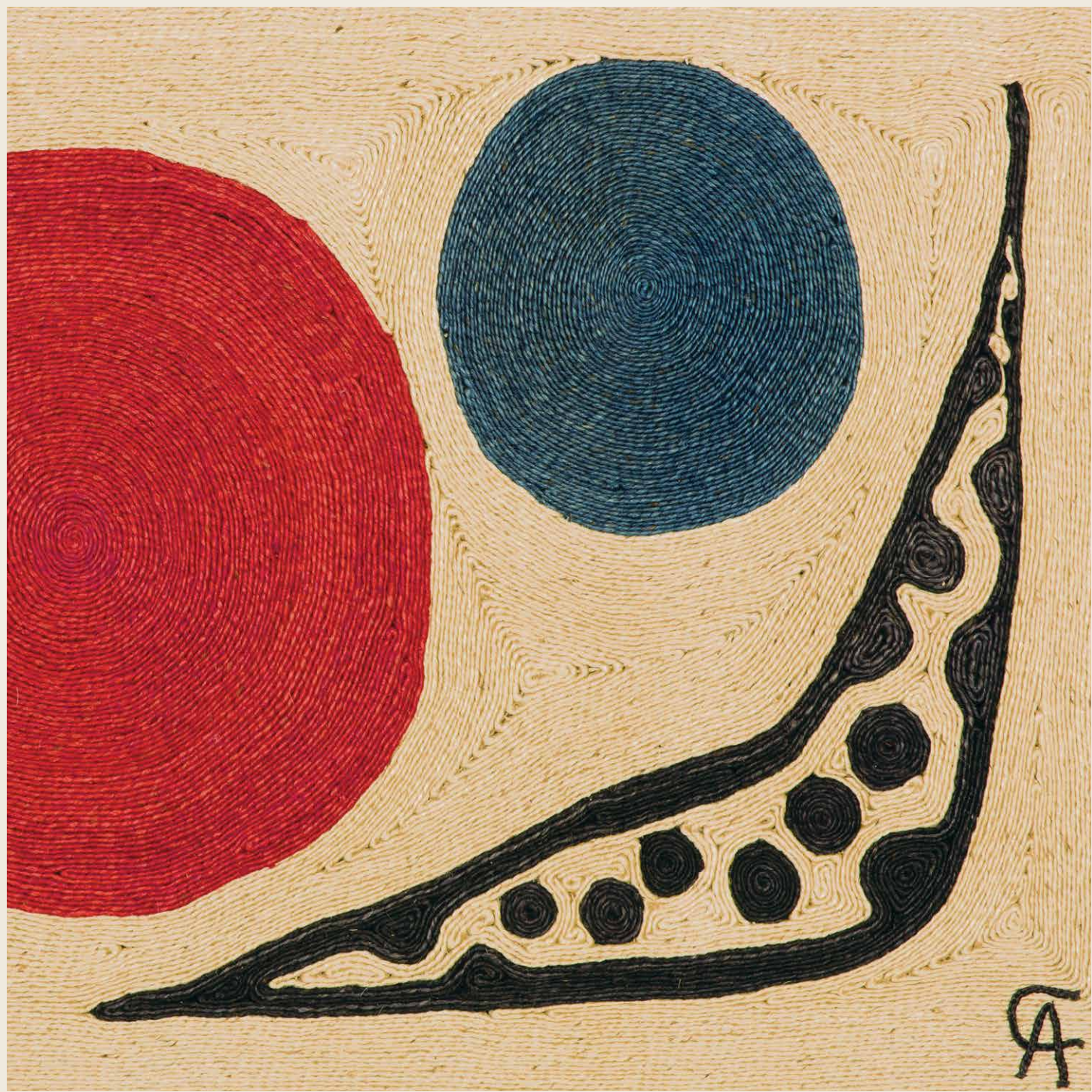


Alexander CALDER (1898-1976)
Star, 89/100, 1975 | hand-woven tapestry in Maguey fiber | 57 x 85 inches | 135704





Alexander CALDER (1898 - 1976)
Moon, 64/100, 1975 | hand-woven Maguery fiber | 57 x 85 inches | 136083



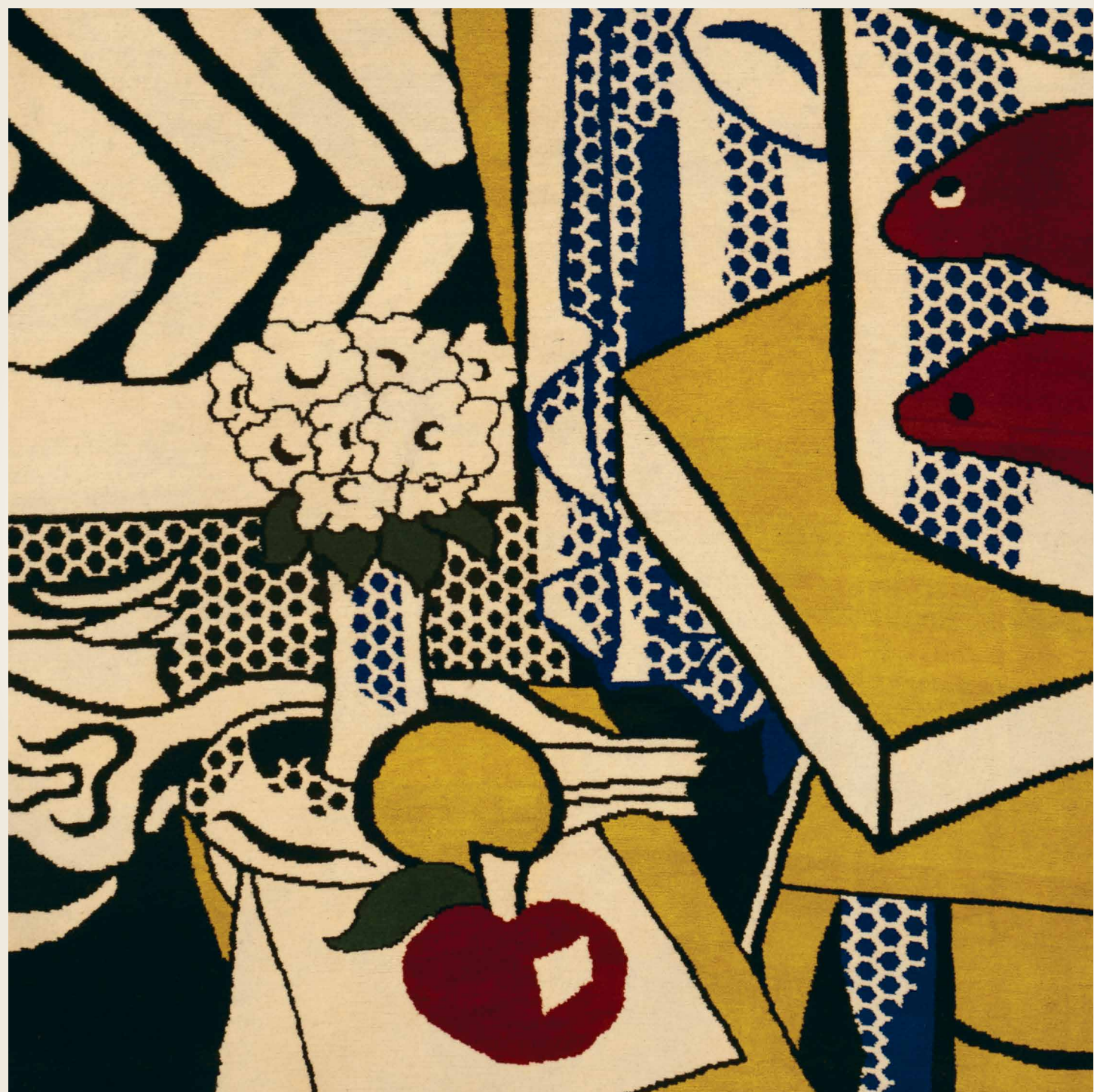


(after) Pablo PICASSO (1881 - 1973)
La Serrure, 1/10, 1950 | wool tapestry | 79 x 61 inches | 136080



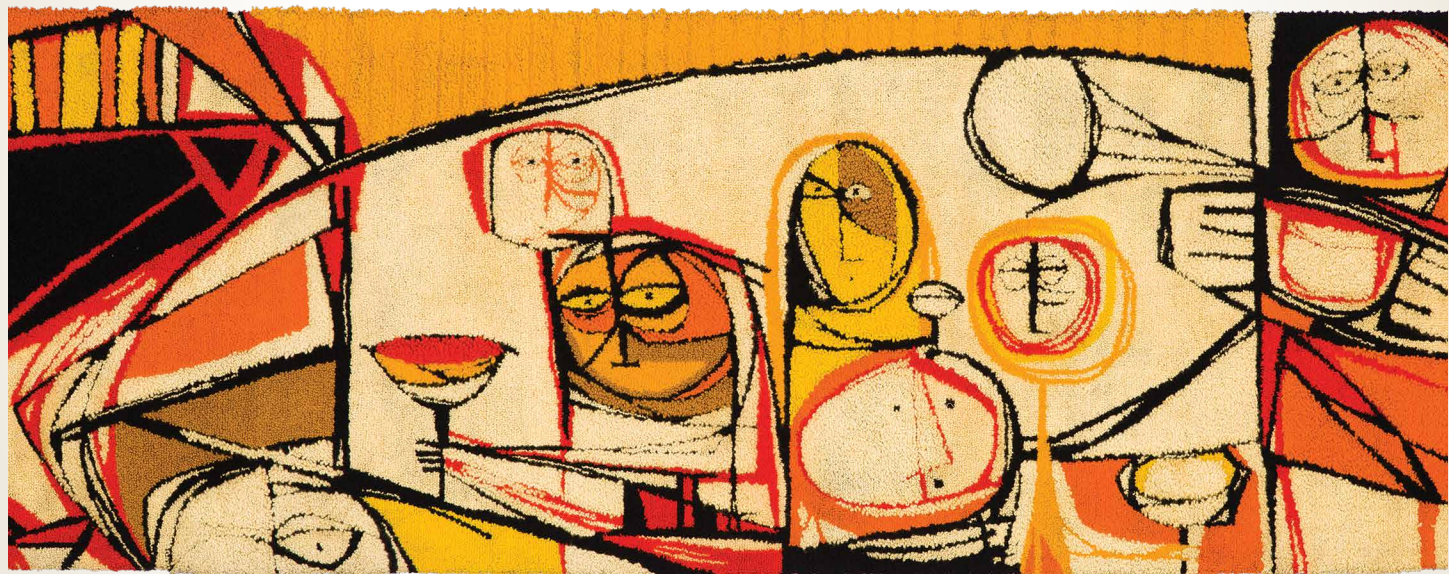
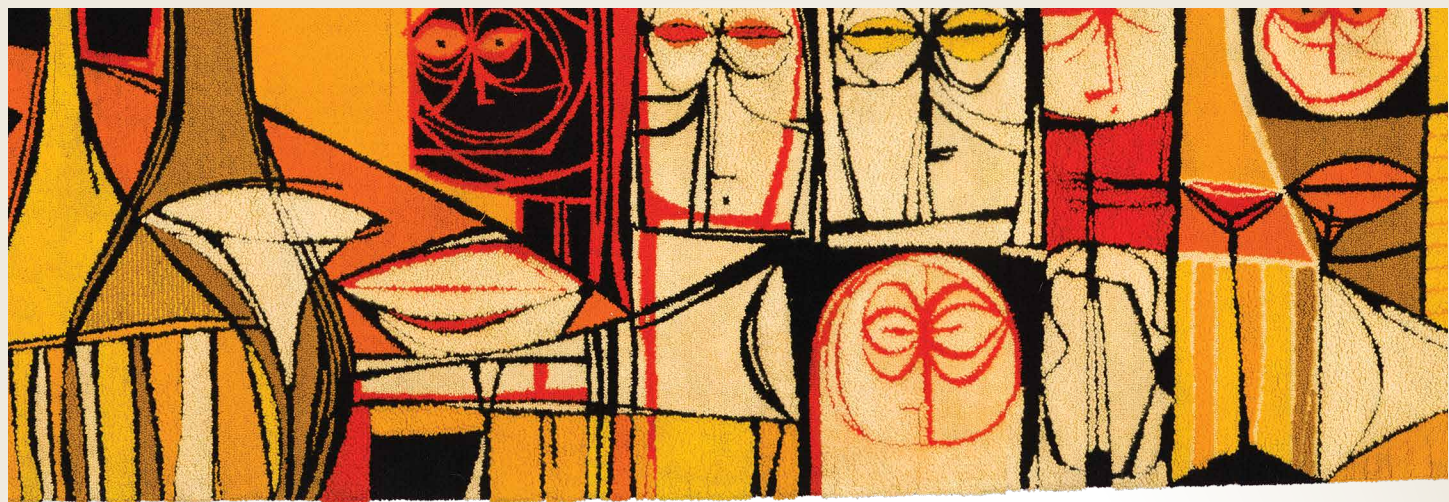


Unknown (CONTEMPORARY)
Lichtenstein | wool tapestry | 81 x 69 inches | 135958



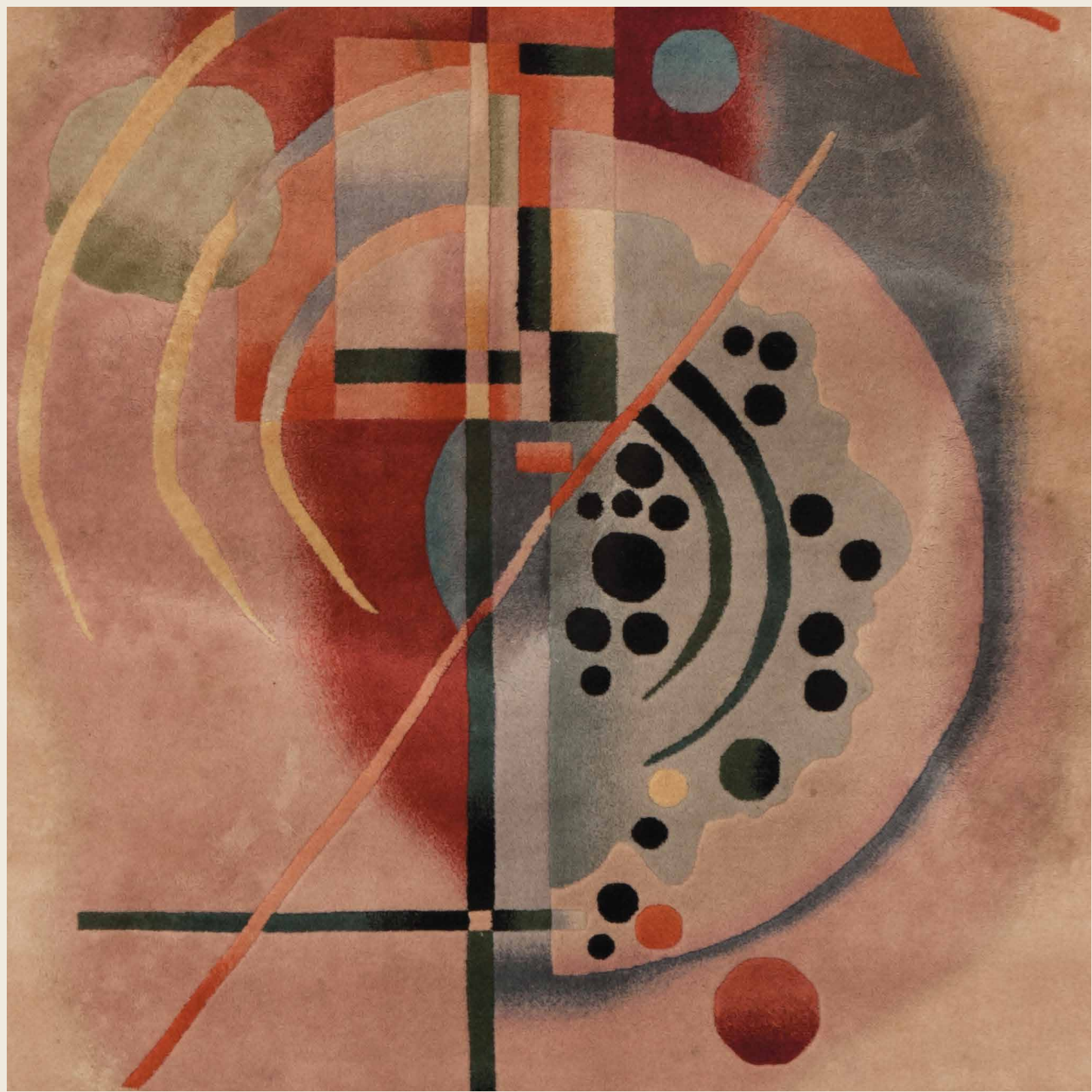


Bill HINZ (1923 - 2009)
Musicians and Cocktails | hooked wool tapestry | 109 1/2 x 120 inches | 135685



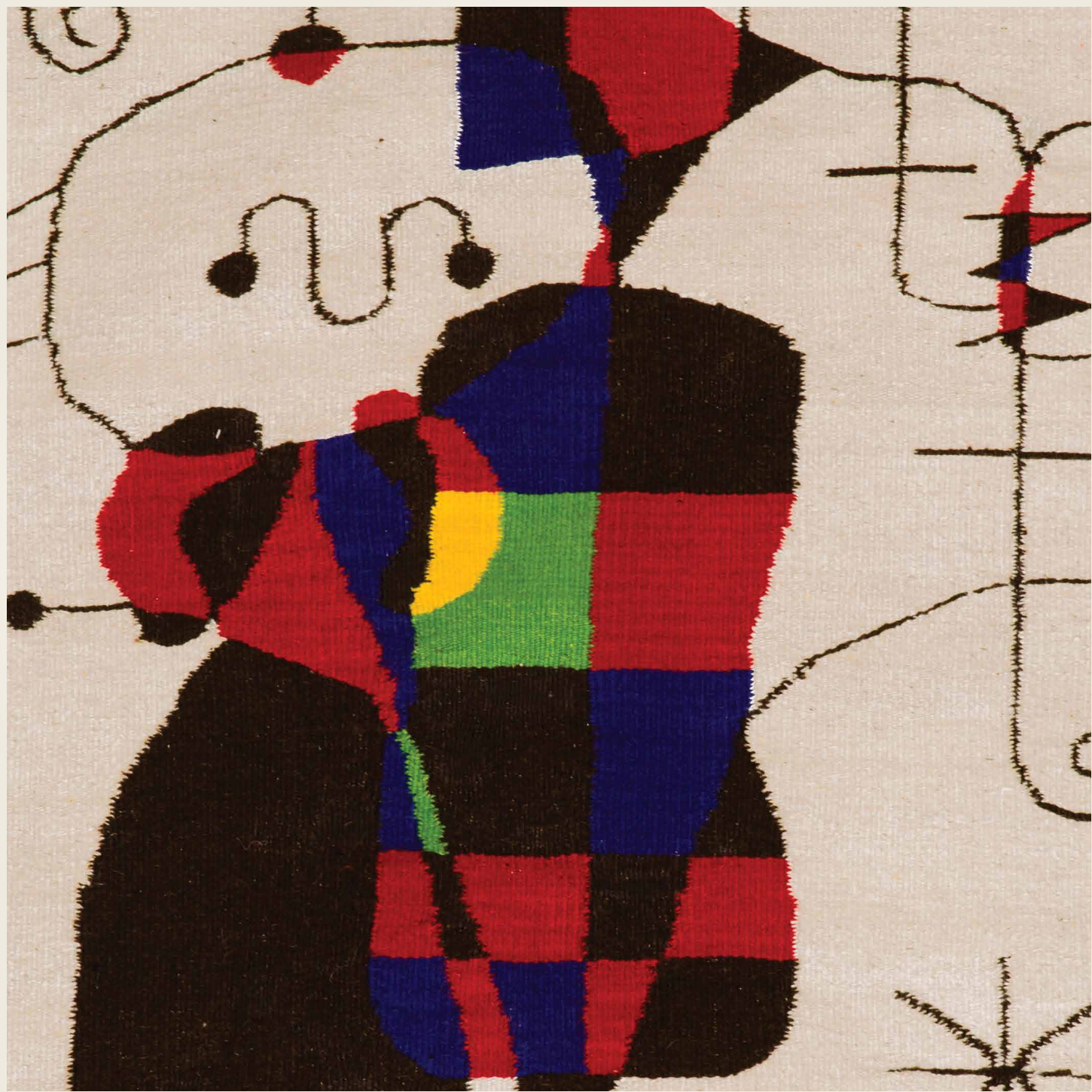


(after) Wassily KANDINSKY (1866 - 1944)
Untitled | wool tapestry | 67 x 45 inches | 135957





Joan MIRÓ (1893 - 1983)
Figuras y perro frente al sol | wool tapestry | 52 1/2 x 34 inches | 135816





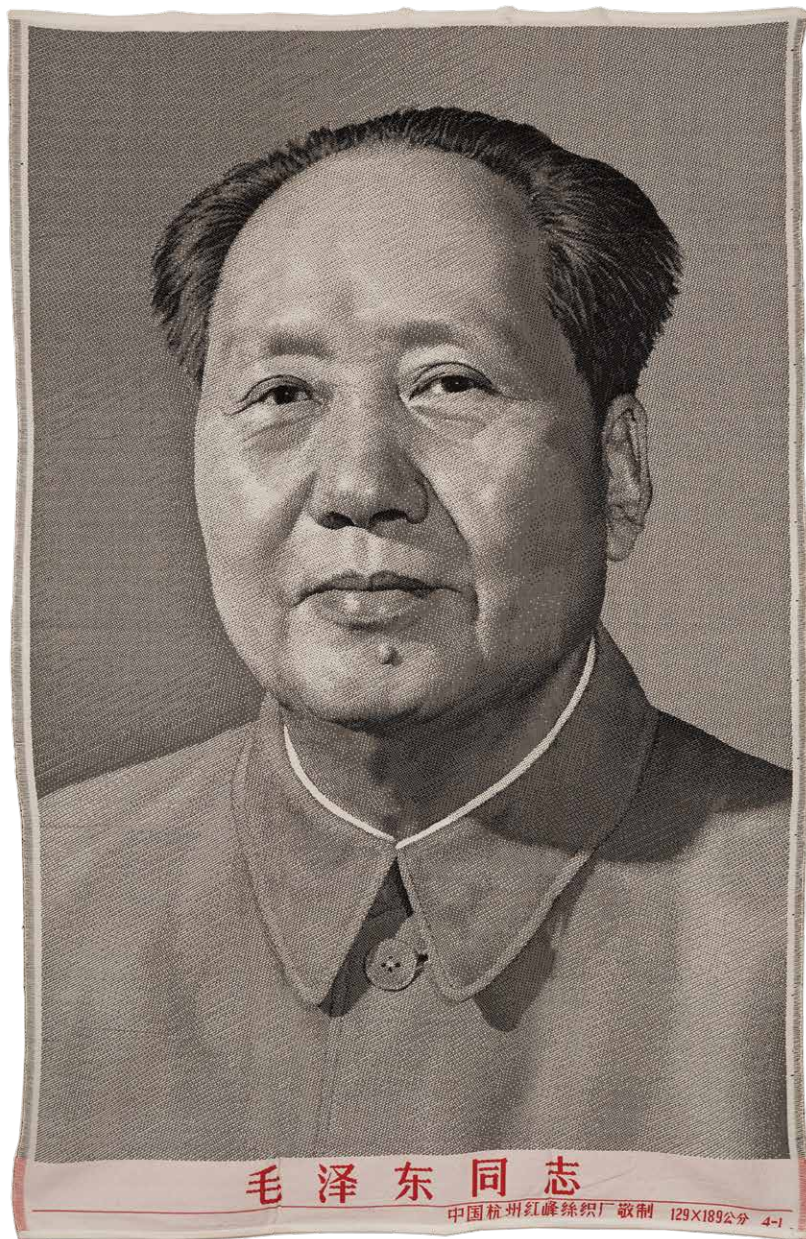
(After) Fernand LÉGER (1881 - 1955)
Untitled | wool tapestry | 51 x 77 inches | 135264



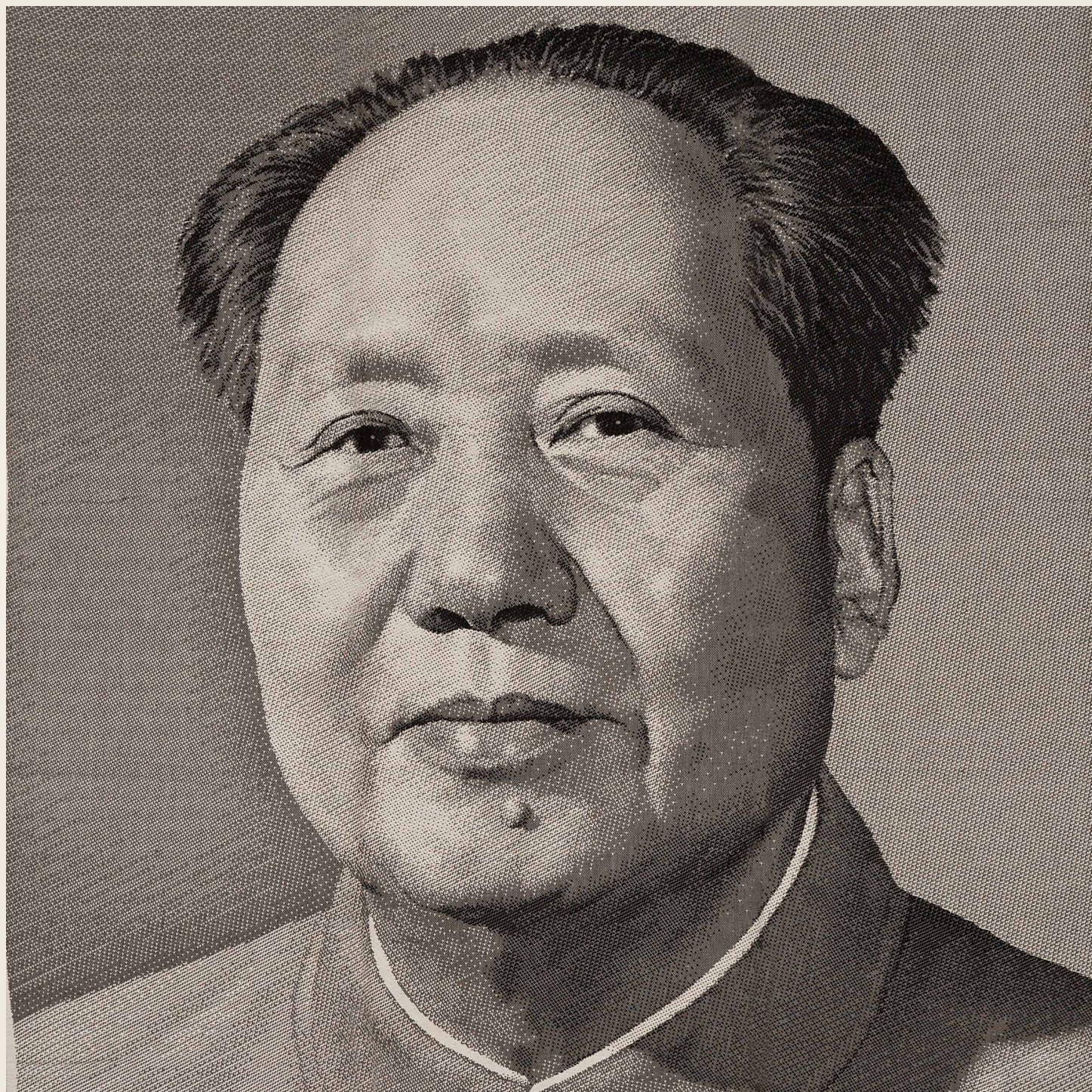


(after) **Fernand LÉGER**
Tapis Jaune, No. 9 | hand-woven Aubusson wool tapis | 89 ⁷/₁₆ x 42 in. | 135726





HANGZHOU Textile
Mao Brocade Textile Portrait, 1969 | Jacquard woven cotton | 77 1/2 x 51 1/4 inches | 135803





Ansoumana DIEDHIOU
Le Coq, 2/8 | Aubusson tapestry | 43 ³/₁₆ x 31 ³/₁₆ inches | 135529





Nicola SIMBARI (1927 - 2012)
Ischia, 116/300 | tapestry Ornemur printed by hand on woolen fabric | 45 x 77 inches | 134829



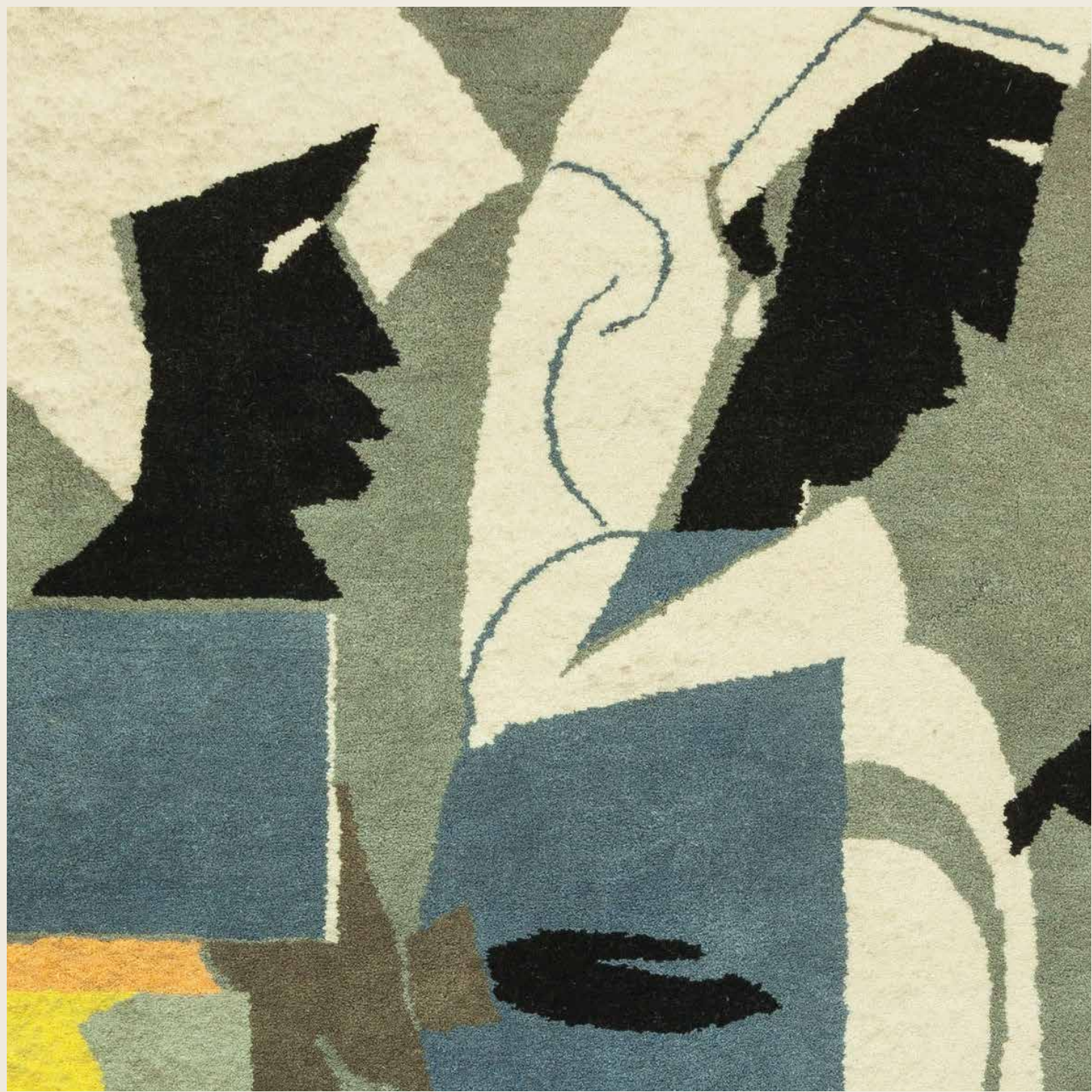


Saliou DIOUF
Princesse Solaire, 3/8 | Aubusson tapestry | 36 x 48 inches | 135531





Romare BEARDEN (1911 - 1988)
Spring Festival, 1970 | wool tapestry | 95 x 65 inches | 135268





Joan MIRÓ (1893-1983)
La Mangouste, c. 1960 | hand-woven wool tapestry | 61 x 77 inches | 135700





Samba BALDE
Antilope Sauvage, 5/8 | Aubusson tapestry | 42 x 31 1/2 inches | 135523



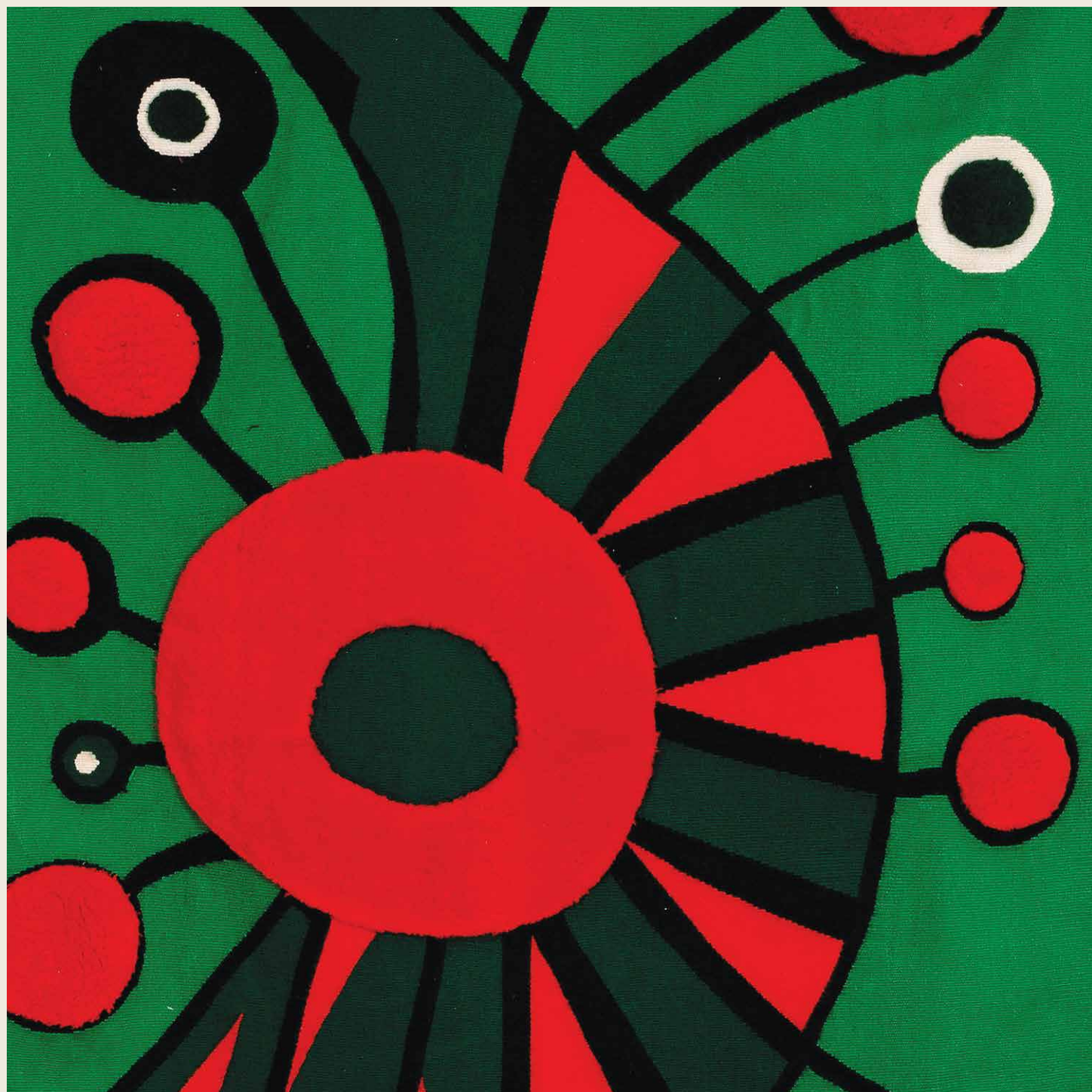


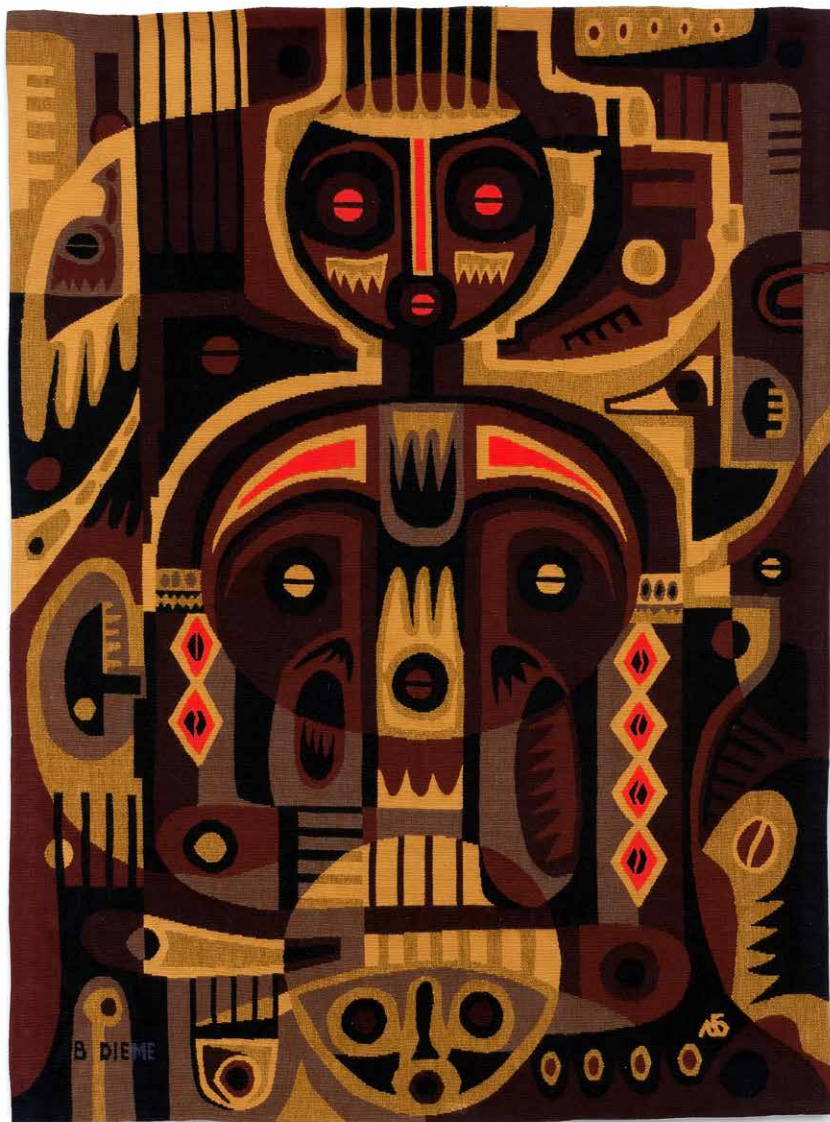
Oumar Talla WADE
Purification 2/4 | Aubusson tapestry | 76 ¹³/₁₆ x 48 inches | 135524



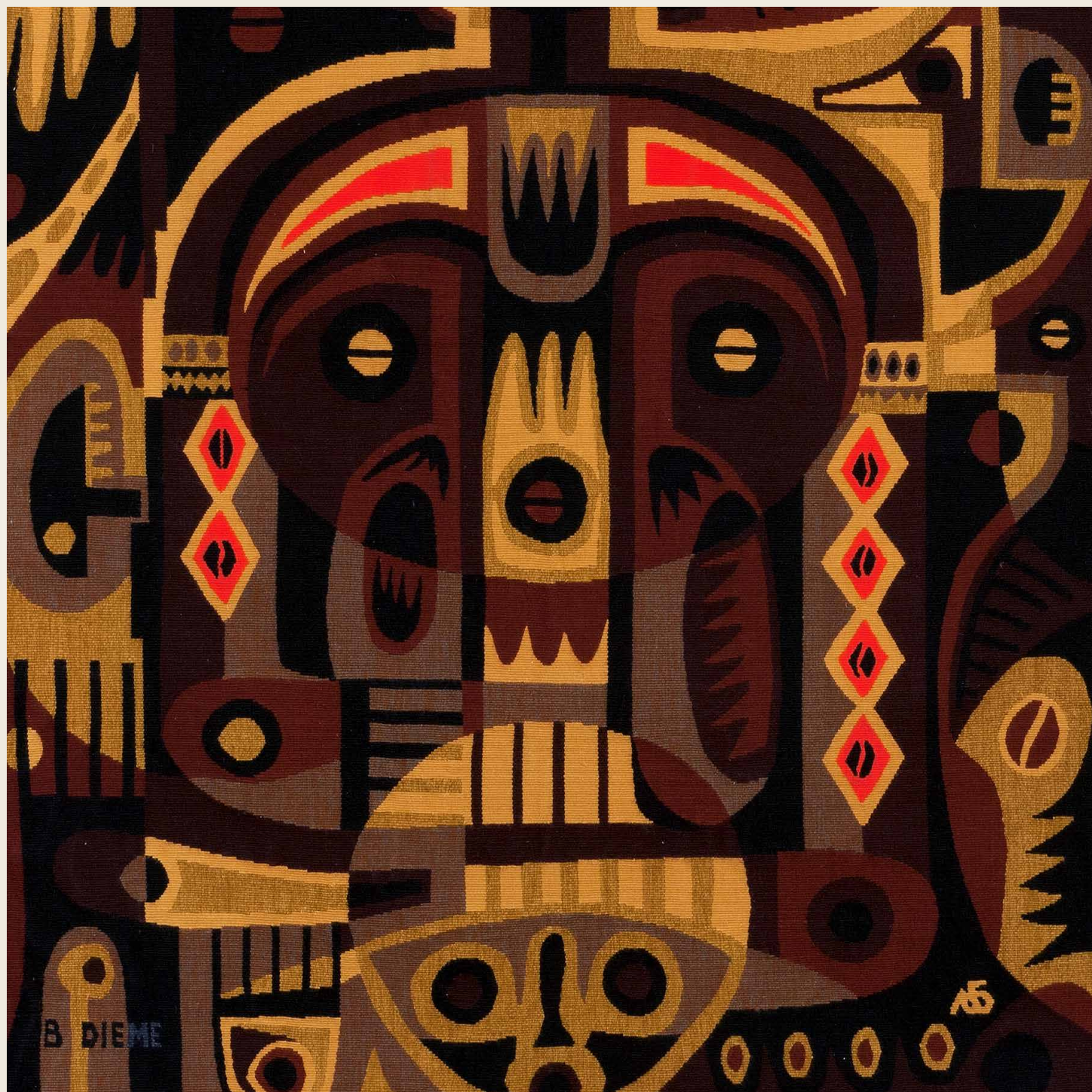


Mamadou WADE
L'Oiseau 1/8 | Aubusson tapestry | 70 1/2 x 43 1/2 inches | 135527





Bakary DIEME
La Famille, 4/8 | Aubusson tapestry | 65 ³/₈ x 45 ⁵/₈ inches | 135529





Amadou SOW
Les Oiseaux du Djoudj, 7/8 | Aubusson tapestry | 37 ³/₁₆ x 66 inches | 135533





Annette OLLIVARY (b. 1926)
L'escarpolette, E/A, 1973 | tapestry | 39 ³/₈ x 28 ³/₄ inches | 134741



For further information and pricing of these artworks please contact the gallery:

New York
+ 1 (212) 421 5390
newyork@wallyfindlay.com

Gallery Hours:
Tuesday | Saturday : 10 am | 6 pm

Palm Beach
+ 1 (561) 655 2090
palmbeach@wallyfindlay.com

Gallery Hours:
Monday | Saturday : 10 am | 6 pm