

The background is an abstract composition of large, overlapping organic shapes in three colors: a vibrant red, a deep blue, and a muted green. The shapes are layered, creating a sense of depth and movement. The red is the most prominent, forming the base and large curved areas. Blue shapes are layered on top of the red in some areas, and green shapes are layered on top of the blue in others. The overall effect is a dynamic, non-representational visual field.

WALLY FINDLAY GALLERIES

WOWEN

WOVEN

The modern tapestry is a sought after statement piece, their functionality as a wall insulation combined with the great beauty and artistic qualities have given these artisan pieces an enduring charm. Having withstood the test of time, these statement pieces return to the spotlight as innovative and modern art.

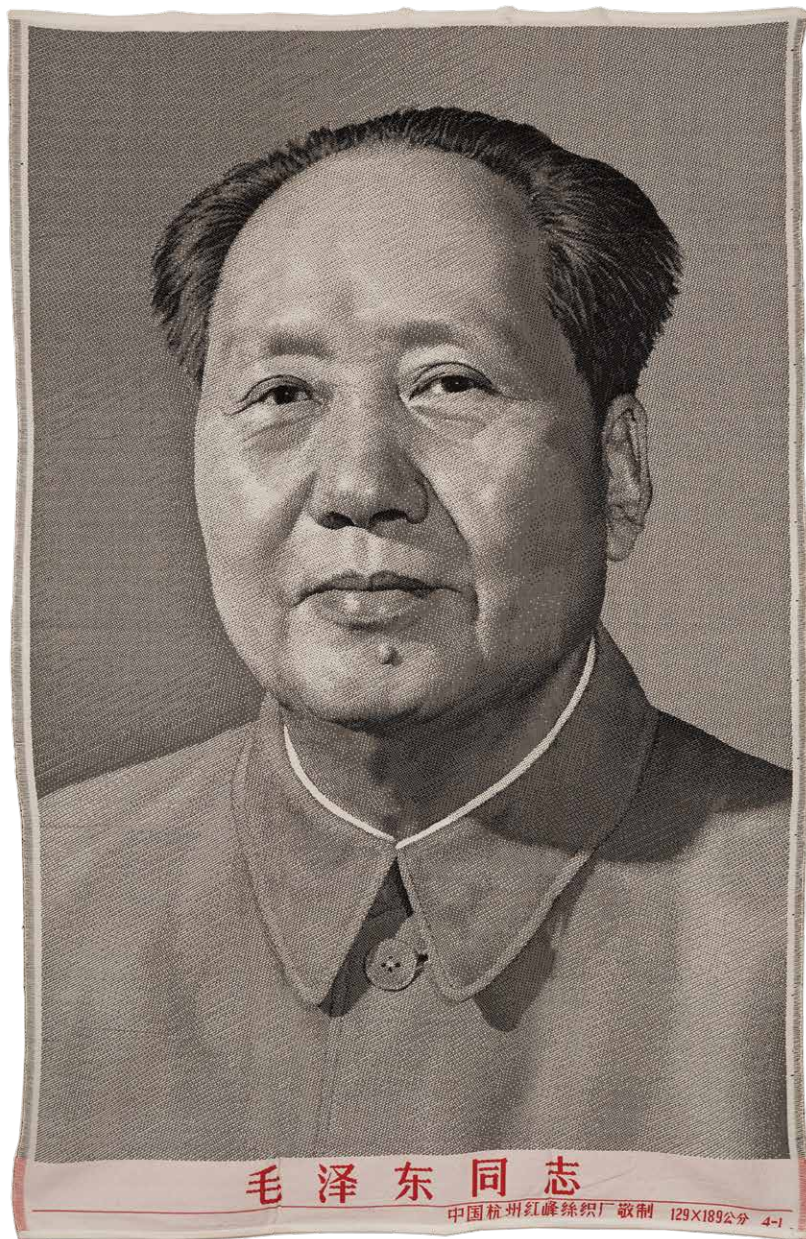
Woven textiles have a long history dating back to the 3rd Century BC. In the Middle Ages, and the following Renaissance, tapestry truly came to life in Europe. Modern Masters Léger, Miró, Dufy and Picasso were some of the first modern artists to collaborate their designs to be translated into tapestries.

Wally Findlay Galleries is pleased to present WOVEN, a collection of tapestries that highlights the variety and unique beauty present in each tapestry.

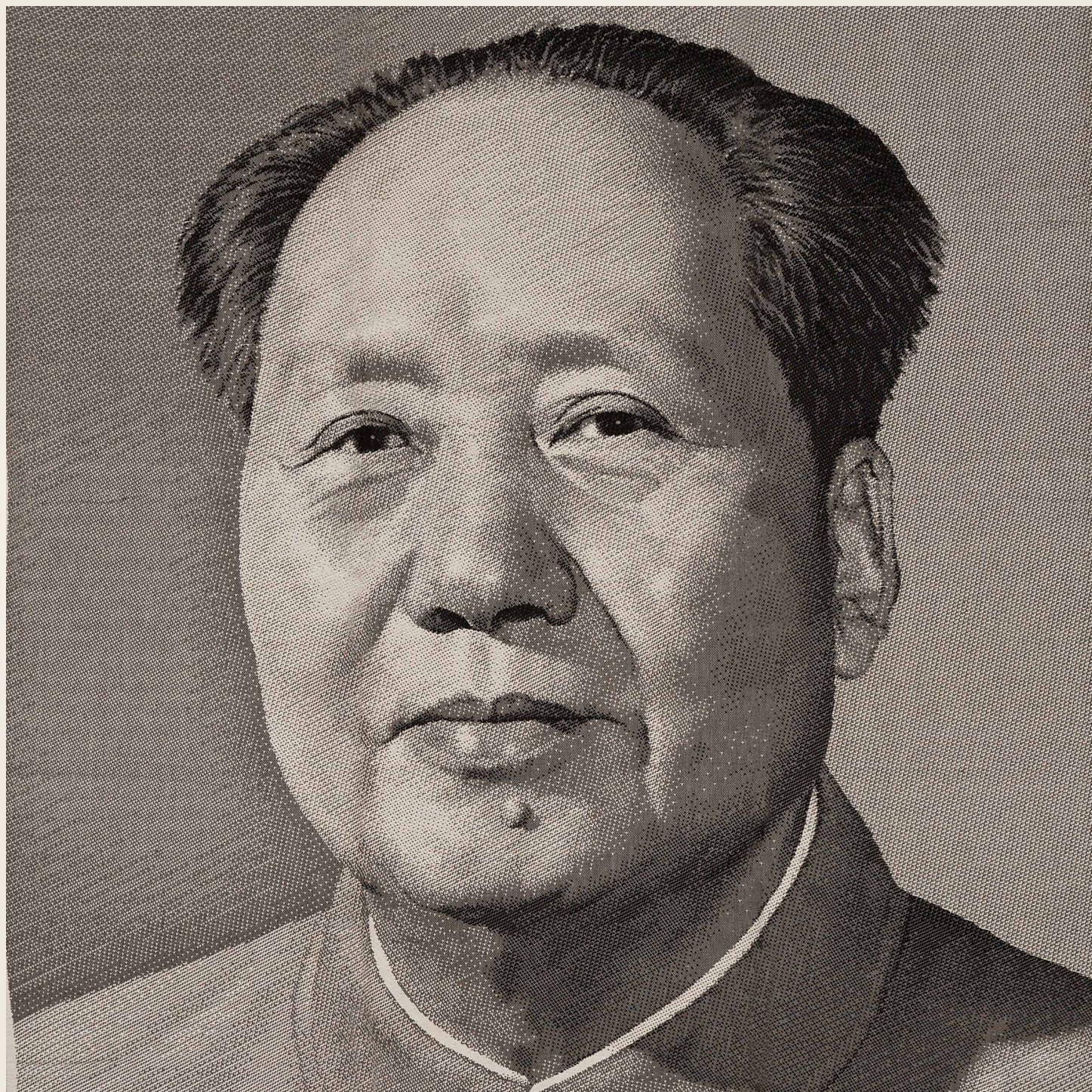


Alexander CALDER (1898-1976)
Star, 89/100, 1975 | hand-woven tapestry in Maguey fiber | 57 x 85 inches | 135704





HANGZHOU Textile
Mao Brocade Textile Portrait, 1969 | Jacquard woven cotton | 77 1/2 x 51 1/4 inches | 135803





Ansoumana DIEDHIOU
Le Coq, 2/8 | Aubusson tapestry | 43 ³/₁₆ x 31 ³/₁₆ inches | 135529





Nicola SIMBARI (1927 - 2012)
Ischia, 116/300 | tapestry Ornemur printed by hand on woolen fabric | 45 x 77 inches | 134829





Fernand LÉGER (after)
Tapis Jaune, No. 9 | hand-woven Aubusson wool tapis | 89 ⁷/₁₆ x 42 in. | 135726



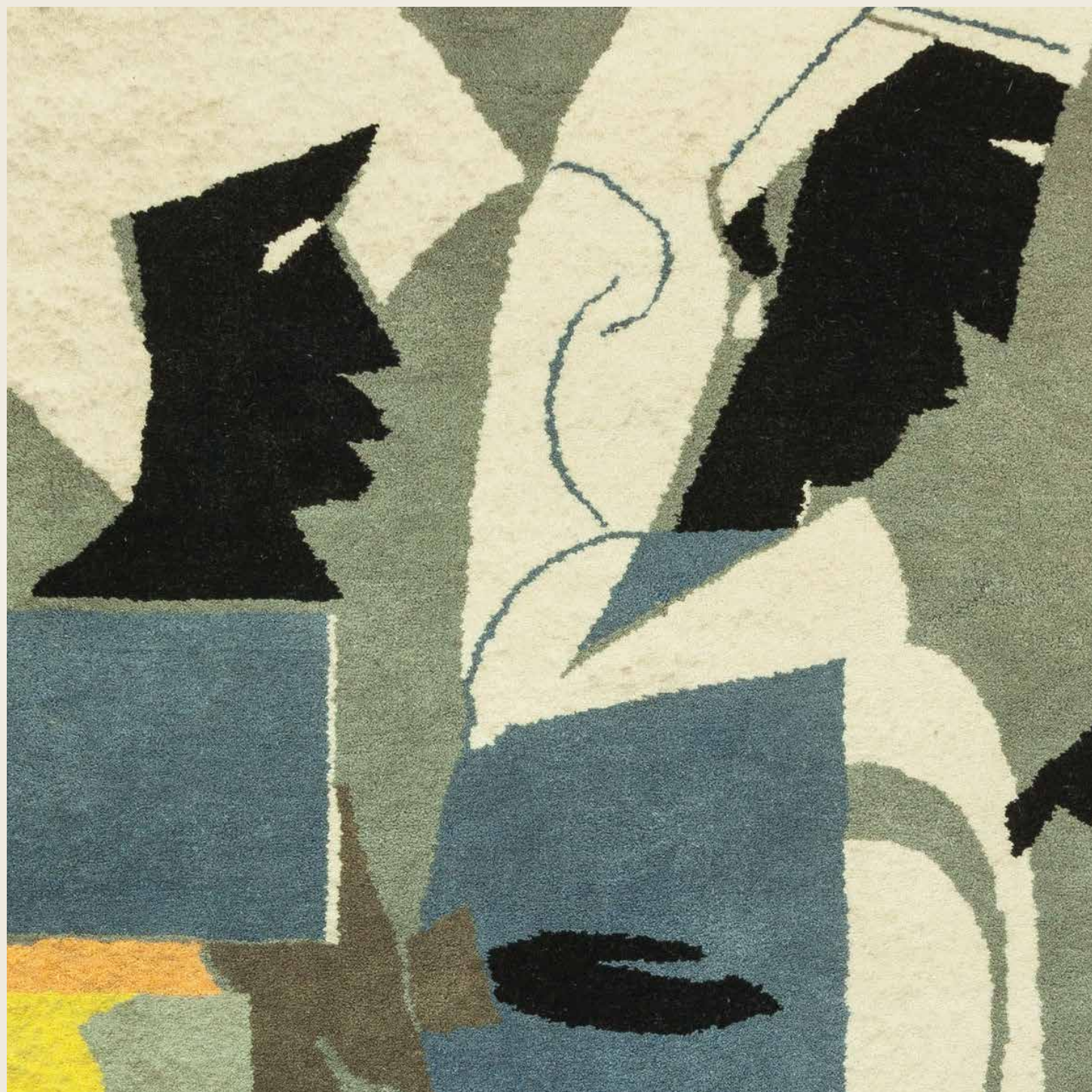


Saliou DIOUF
Princesse Solaire, 3/8 | Aubusson tapestry | 36 x 48 inches | 135531





Romare BEARDEN (1911 - 1988)
Spring Festival, 1970 | wool tapestry | 95 x 65 inches | 135268





Joan MIRÓ (1893-1983)
La Mangouste, c. 1960 | hand-woven wool tapestry | 61 x 77 inches | 135700





Samba BALDE
Antilope Sauvage, 5/8 | Aubusson tapestry | 42 x 31 1/2 inches | 135523



SAMBA BALDE



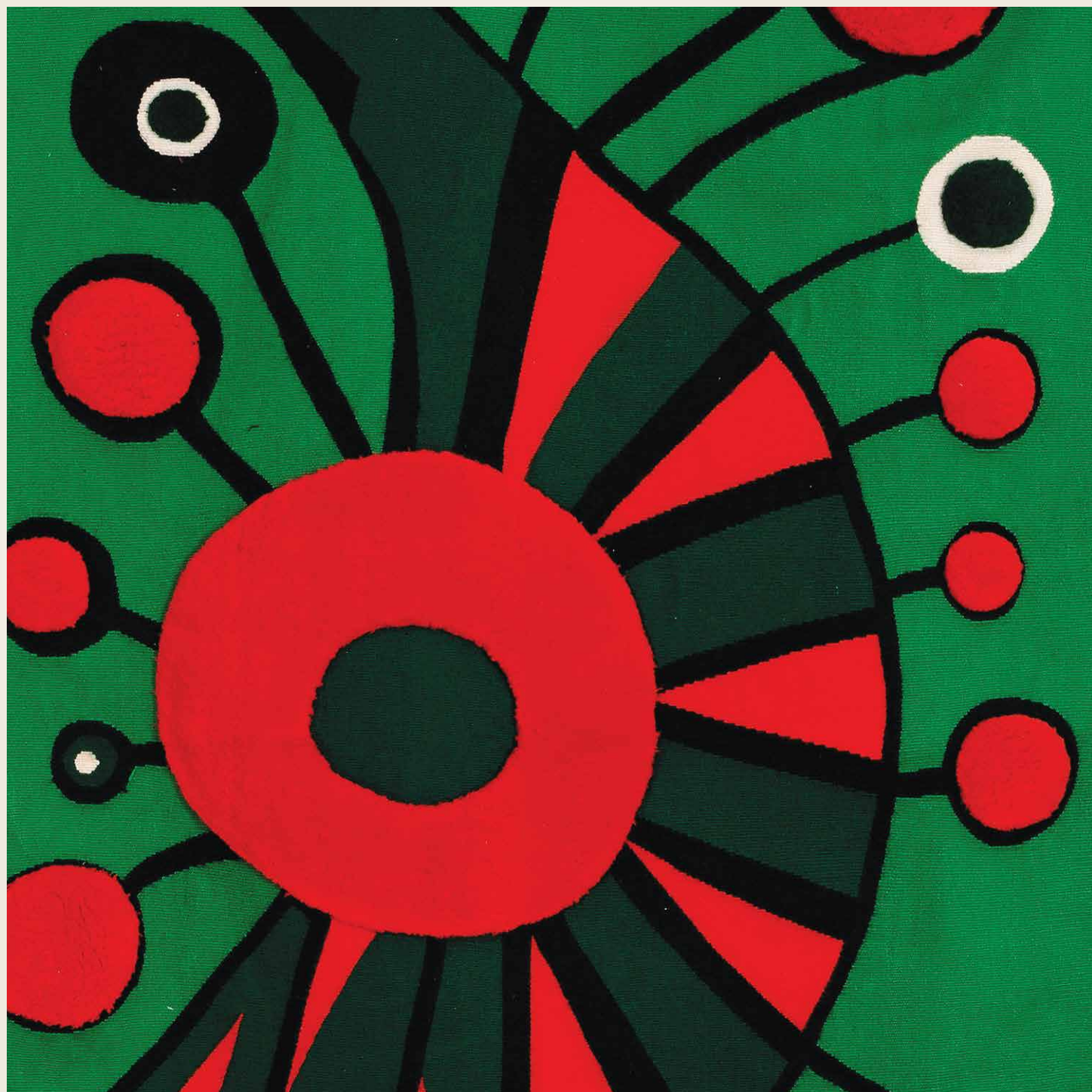


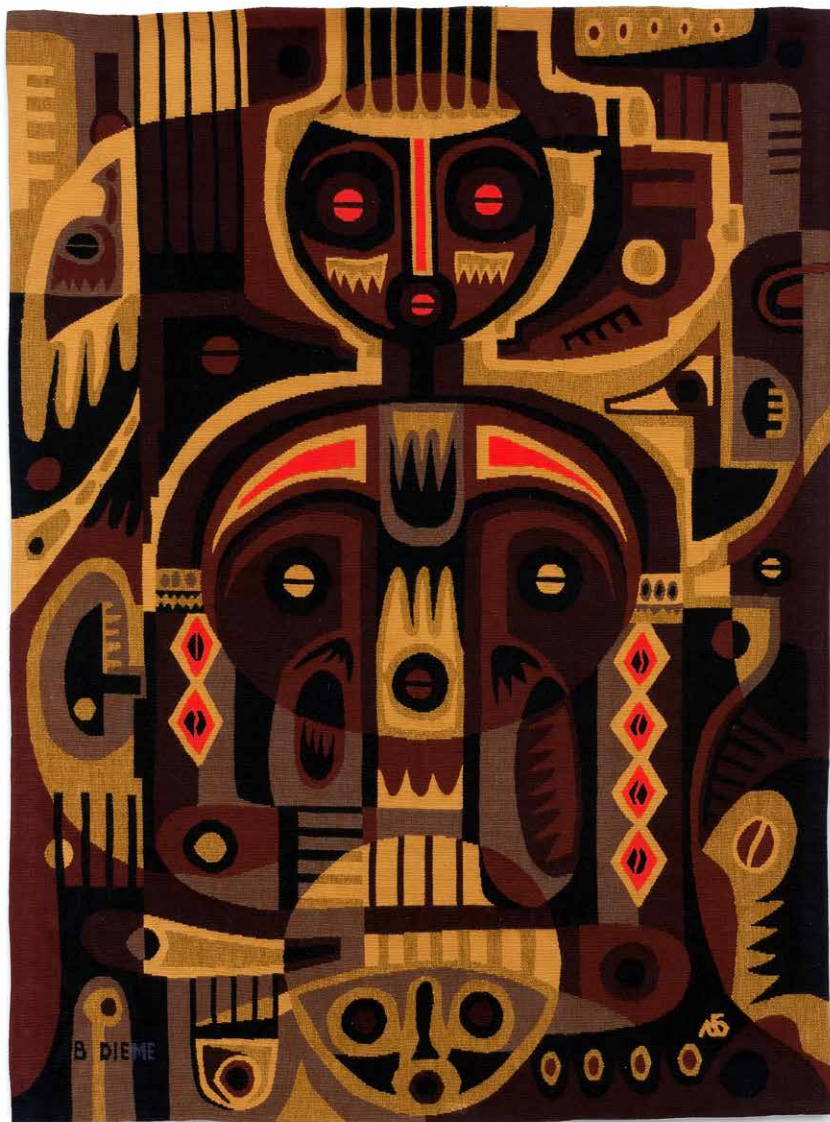
Oumar Tala WADE
Purification 2/4 | Aubusson tapestry | 76 ¹³/₁₆ x 48 inches | 135524



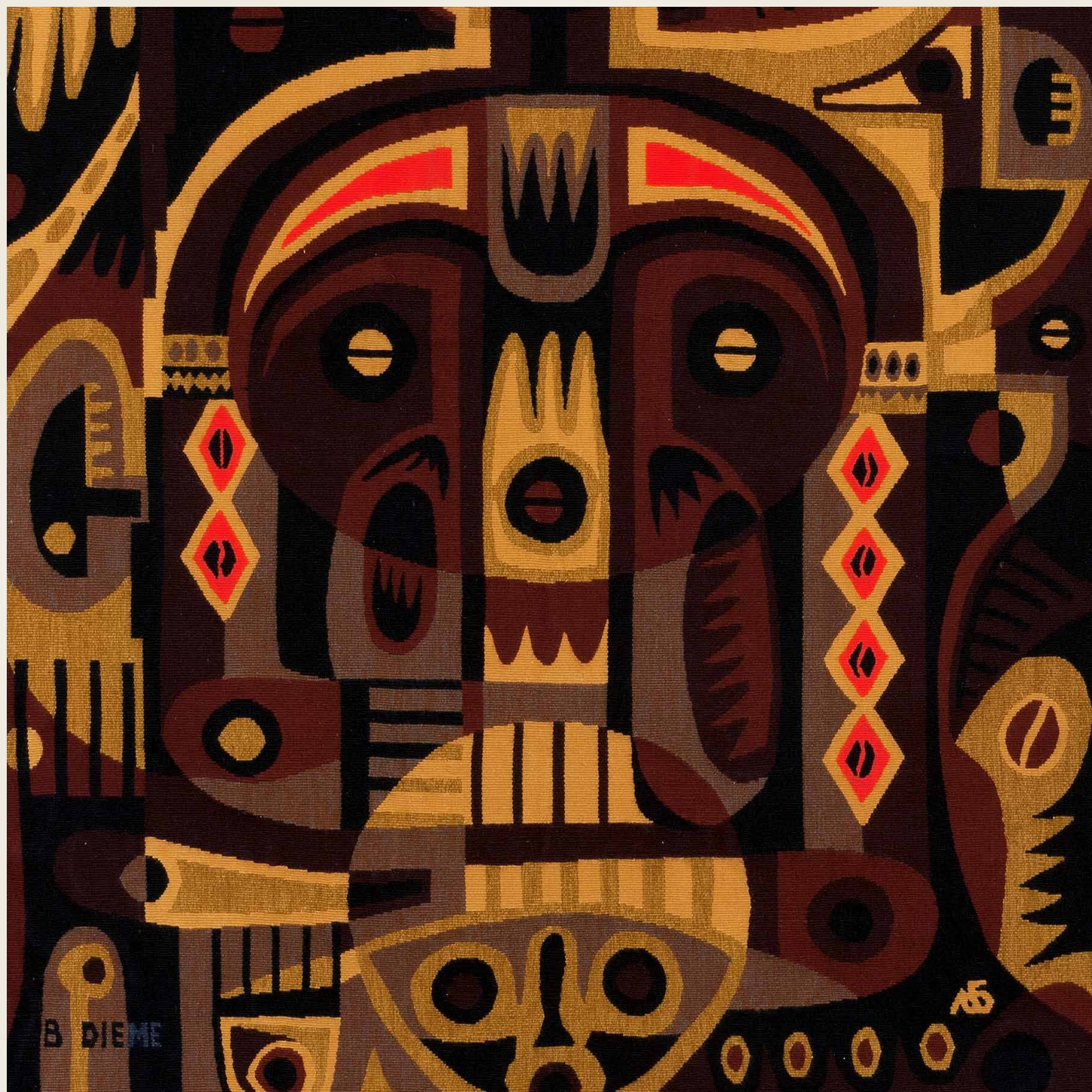


Mamadou WADE
L'Oiseau 1/8 | Aubusson tapestry | 70 1/2 x 43 1/2 inches | 135527





Bakary DIEME
La Famille, 4/8 | Aubusson tapestry | 65 ³/₈ x 45 ⁵/₈ inches | 135529





Amadou SOW
Les Oiseaux du Djoudj, 7/8 | Aubusson tapestry | 37 ³/₁₆ x 66 inches | 135533





Annette OLLIVARY (b. 1926)
L'escarpolette, E/A, 1973 | tapestry | 39 ³/₈ x 28 ³/₄ inches | 134741





Robert INDIANA (b. 1928)
Classic Love, 25/100, 1995 | hand woven wool tapestry | 96 x 96 inches | 135164



For further information and pricing of these artworks please contact the gallery:

New York
+ 1 (212) 421 5390
newyork@wallyfindlay.com

Gallery Hours:
Tuesday | Saturday : 10 am | 6 pm

Palm Beach
+ 1 (561) 655 2090
palmbeach@wallyfindlay.com

Gallery Hours:
Monday | Saturday : 10 am | 6 pm