



WALLY FINDLAY GALLERIES

SIMEON BRAGUIN
T R A N S I T I O N S



SIMEON BRAGUIN

(1907 - 1997)

INTERVIEW WITH JAMES R. BORYNACK
CHAIRMAN AND CEO | WALLY FINDLAY GALLERIES

What first attracted you to Simeon Braguin and his oeuvre?

Simeon Braguin's ability to forge his own abstract sensibilities with conscious fields and forms of Color. As well as the fact that he was Ukrainian and only 10 years old when he arrived in America with his family in 1917, at the onset of the Russian Revolution.

Can you tell me a little bit about his previous solo shows at Wally Findlay Galleries?

His first exhibition opened in our Palm Beach Gallery with a two-person exhibition including Priscilla Heine. It was after the success in sales of Braguin's work in that exhibition that our confidence was confirmed. His complete body of work was inventoried and evaluated for future exhibitions. His first solo exhibition with Wally Findlay opened in 2009 in New York, followed by an exhibition in Palm Beach.

What led to the decision to showcase his works at two different locations this year?

Considering his past exhibitions and the positive responses from our media campaigns it became apparent that having two exhibitions from different periods of compositions would acknowledge the independence Braguin mastered during these times. The Palm Beach exhibition was conceived as a collaborative exhibition because there is substantial inventory to hold that group together.

What is the curatorial direction for the New York show, and why is the focus on artworks from the 1990s?

Our curatorial direction for the New York exhibition is to advance the understanding and desire of this artist's outstanding interpretation of his imagination and influences in the early 1990's. For Braguin the 1990's began as wonderfully rewarding. In 1991 Yale University Art Gallery opened his exhibition, which was handsomely reviewed and critically acclaimed. During this period his sense of building depth with color became exceedingly painterly. His very conservative and frugal demeanor had abandoned his creative "spiritus." It was quite clear that his work had taken on quizzical ebullience honing in on a new collector. By the '90s Braguin was a mature and celebrated artist.

Are there any distinct characteristics of works from the 1990s or any works that you would like to highlight?

As you may know he suffered a stroke in 1994. This episode disturbed him greatly. However, being the man he was, and the delight he held for life and his environments, he struggled to keep par with his imagination. In 1997, three years after his stroke, he fell victim to a major heart attack and died. The 90's gave him an artistic license to be bold, daring and radical about his painting and the application of his paint. Much like the Impressionist painters, he built depth within his large fields of color. Perfect to this example is the Painting *Untitled 1989-90*. (Most of his worked went untitled as he chose to let the viewer assign meaning unto themselves. A numeric system was later given to the works by his Estate, which he left in its entirety to Yale University Art School.)

What is the focus of the Palm Beach show?

As mentioned before, the Palm Beach Exhibition opening in October 2013 will focus on a splendid body of work from the 1970's dealing with the white washed negative space of his canvases. This space being his option for the balance for bright colors he would invent in unpredictable places. He had just bought a cottage situated on the Connecticut River, in Essex, and was feeling a great sense of happiness. He was with his wife Janet and their many friends who would come and visit, such as, Saul Stienberg, Fairfield Porter and his young disciple, Andy Warhol, who had worked for him while he was Art Director at Vogue (where he met his wife who had been the Fashion Editor.) These early works were expressed in so many different sizes that the exhibition has a musical sense about the playfulness of his varied painterly canvases.

WALLY FINDLAY GALLERIES INTERNATIONAL, INC.

124 EAST 57TH STREET, NEW YORK, NY 10022 • (212) 421 5390

165 WORTH AVENUE, PALM BEACH, FL 33480 • (561) 655 2090

WWW.WALLYFINDLAY.COM

128141



ABSTRACTION 42, 1996 | 48 x 60 INCHES | ACRYLIC ON CANVAS

WALLY FINDLAY GALLERIES INTERNATIONAL, INC.

124 EAST 57TH STREET, NEW YORK, NY 10022 • (212) 421 5390

165 WORTH AVENUE, PALM BEACH, FL 33480 • (561) 655 2090

WWW.WALLYFINDLAY.COM



128148



ABSTRACTION 43, 1996 | 48 x 60 INCHES | ACRYLIC ON CANVAS

WALLY FINDLAY GALLERIES INTERNATIONAL, INC.

124 EAST 57TH STREET, NEW YORK, NY 10022 • (212) 421 5390

165 WORTH AVENUE, PALM BEACH, FL 33480 • (561) 655 2090

WWW.WALLYFINDLAY.COM



134335



UNTITLED, 1995 | 48 x 60 INCHES | ACRYLIC ON CANVAS

WALLY FINDLAY GALLERIES INTERNATIONAL, INC.

124 EAST 57TH STREET, NEW YORK, NY 10022 • (212) 421 5390

165 WORTH AVENUE, PALM BEACH, FL 33480 • (561) 655 2090

WWW.WALLYFINDLAY.COM



134334



UNTITLED, 1996 | 48 x 60 INCHES | ACRYLIC ON CANVAS

WALLY FINDLAY GALLERIES INTERNATIONAL, INC.

124 EAST 57TH STREET, NEW YORK, NY 10022 • (212) 421 5390

165 WORTH AVENUE, PALM BEACH, FL 33480 • (561) 655 2090

WWW.WALLYFINDLAY.COM



134427



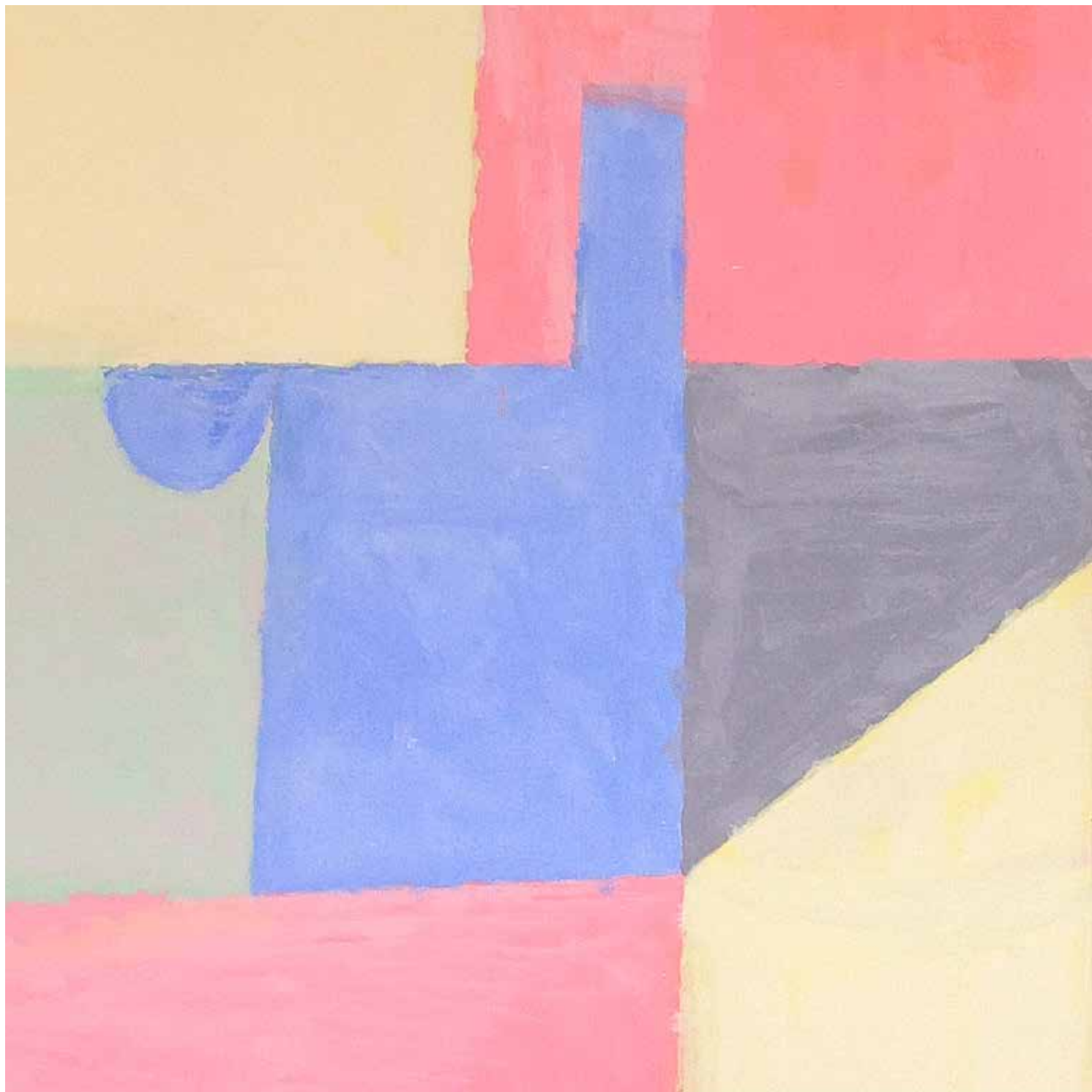
UNTITLED, 1994 | 60 x 48 INCHES | ACRYLIC ON CANVAS

WALLY FINDLAY GALLERIES INTERNATIONAL, INC.

124 EAST 57TH STREET, NEW YORK, NY 10022 • (212) 421 5390

165 WORTH AVENUE, PALM BEACH, FL 33480 • (561) 655 2090

WWW.WALLYFINDLAY.COM



134342



UNTITLED, 1989-90 | 50 ^{1/4} X 64 ^{1/4} INCHES | ACRYLIC ON CANVAS

WALLY FINDLAY GALLERIES INTERNATIONAL, INC.

124 EAST 57TH STREET, NEW YORK, NY 10022 • (212) 421 5390

165 WORTH AVENUE, PALM BEACH, FL 33480 • (561) 655 2090

WWW.WALLYFINDLAY.COM





UNTITLED, 1993- 64 x 50 INCHES | ACRYLIC ON CANVAS

WALLY FINDLAY GALLERIES INTERNATIONAL, INC.

124 EAST 57TH STREET, NEW YORK, NY 10022 • (212) 421 5390

165 WORTH AVENUE, PALM BEACH, FL 33480 • (561) 655 2090

WWW.WALLYFINDLAY.COM



134440



UNTITLED, 1990-91 | 64 x 50 INCHES | ACRYLIC ON CANVAS

WALLY FINDLAY GALLERIES INTERNATIONAL, INC.

124 EAST 57TH STREET, NEW YORK, NY 10022 • (212) 421 5390

165 WORTH AVENUE, PALM BEACH, FL 33480 • (561) 655 2090

WWW.WALLYFINDLAY.COM



134479



UNTITLED, 1993 | 64 x 50 INCHES | ACRYLIC ON CANVAS

WALLY FINDLAY GALLERIES INTERNATIONAL, INC.

124 EAST 57TH STREET, NEW YORK, NY 10022 • (212) 421 5390

165 WORTH AVENUE, PALM BEACH, FL 33480 • (561) 655 2090

WWW.WALLYFINDLAY.COM



134341



UNTITLED, 1994 | 50 x 64 INCHES | ACRYLIC ON CANVAS

WALLY FINDLAY GALLERIES INTERNATIONAL, INC.

124 EAST 57TH STREET, NEW YORK, NY 10022 • (212) 421 5390

165 WORTH AVENUE, PALM BEACH, FL 33480 • (561) 655 2090

WWW.WALLYFINDLAY.COM



134441



UNTITLED, 1989-90 | 64 x 50 INCHES | ACRYLIC ON CANVAS

WALLY FINDLAY GALLERIES INTERNATIONAL, INC.

124 EAST 57TH STREET, NEW YORK, NY 10022 • (212) 421 5390

165 WORTH AVENUE, PALM BEACH, FL 33480 • (561) 655 2090

WWW.WALLYFINDLAY.COM



134425



UNTITLED, 1994 | 60 x 48 INCHES | ACRYLIC ON CANVAS

WALLY FINDLAY GALLERIES INTERNATIONAL, INC.

124 EAST 57TH STREET, NEW YORK, NY 10022 • (212) 421 5390

165 WORTH AVENUE, PALM BEACH, FL 33480 • (561) 655 2090

WWW.WALLYFINDLAY.COM



134389



UNTITLED, 1995 | 30 x 38 INCHES | ACRYLIC ON LINEN

WALLY FINDLAY GALLERIES INTERNATIONAL, INC.

124 EAST 57TH STREET, NEW YORK, NY 10022 • (212) 421 5390

165 WORTH AVENUE, PALM BEACH, FL 33480 • (561) 655 2090

WWW.WALLYFINDLAY.COM



134413



UNTITLED | 30 x 38 INCHES | ACRYLIC ON CANVAS

WALLY FINDLAY GALLERIES INTERNATIONAL, INC.

124 EAST 57TH STREET, NEW YORK, NY 10022 • (212) 421 5390

165 WORTH AVENUE, PALM BEACH, FL 33480 • (561) 655 2090

WWW.WALLYFINDLAY.COM



134337



UNTITLED, 1994 | 60 x 48 INCHES | ACRYLIC ON CANVAS

WALLY FINDLAY GALLERIES INTERNATIONAL, INC.

124 EAST 57TH STREET, NEW YORK, NY 10022 • (212) 421 5390

165 WORTH AVENUE, PALM BEACH, FL 33480 • (561) 655 2090

WWW.WALLYFINDLAY.COM



134477



UNTITLED, 1993 | 64 x 50 INCHES | ACRYLIC ON CANVAS

WALLY FINDLAY GALLERIES INTERNATIONAL, INC.

124 EAST 57TH STREET, NEW YORK, NY 10022 • (212) 421 5390

165 WORTH AVENUE, PALM BEACH, FL 33480 • (561) 655 2090

WWW.WALLYFINDLAY.COM



134339



UNTITLED, 1995 | 60 x 48 INCHES | ACRYLIC ON CANVAS

WALLY FINDLAY GALLERIES INTERNATIONAL, INC.

124 EAST 57TH STREET, NEW YORK, NY 10022 • (212) 421 5390

165 WORTH AVENUE, PALM BEACH, FL 33480 • (561) 655 2090

WWW.WALLYFINDLAY.COM



134420



UNTITLED, 1995 | 60 x 48 INCHES | ACRYLIC ON CANVAS

WALLY FINDLAY GALLERIES INTERNATIONAL, INC.

124 EAST 57TH STREET, NEW YORK, NY 10022 • (212) 421 5390

165 WORTH AVENUE, PALM BEACH, FL 33480 • (561) 655 2090

WWW.WALLYFINDLAY.COM



132391



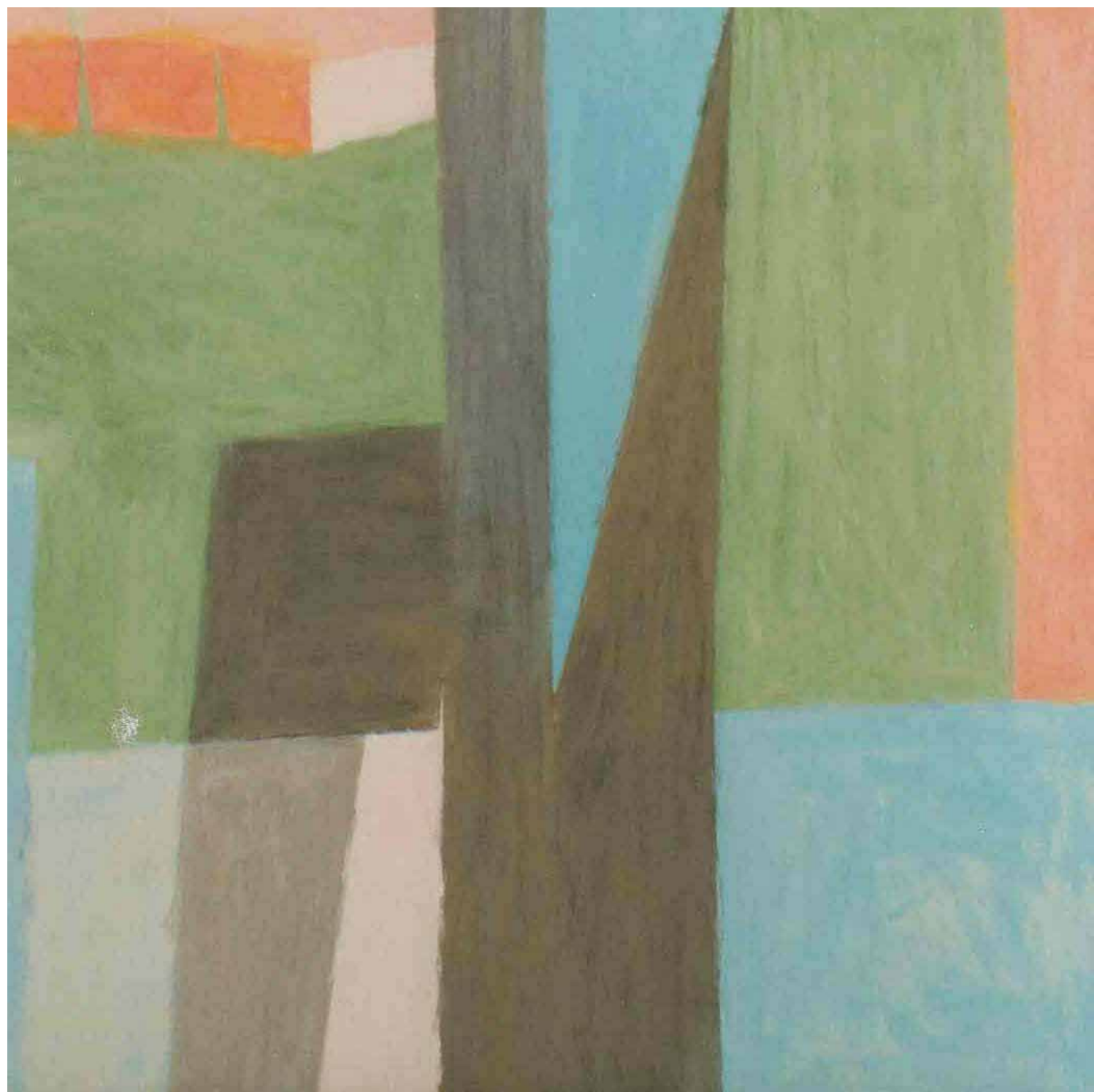
UNTITLED, 1992 | 60 x 48 INCHES | ACRYLIC ON CANVAS

WALLY FINDLAY GALLERIES INTERNATIONAL, INC.

124 EAST 57TH STREET, NEW YORK, NY 10022 • (212) 421 5390

165 WORTH AVENUE, PALM BEACH, FL 33480 • (561) 655 2090

WWW.WALLYFINDLAY.COM



134426



UNTITLED, 1992 | 60 x 48 INCHES | ACRYLIC ON CANVAS

WALLY FINDLAY GALLERIES INTERNATIONAL, INC.

124 EAST 57TH STREET, NEW YORK, NY 10022 • (212) 421 5390

165 WORTH AVENUE, PALM BEACH, FL 33480 • (561) 655 2090

WWW.WALLYFINDLAY.COM



134438



UNTITLED, 1992 | 64 x 50 INCHES | ACRYLIC ON CANVAS

WALLY FINDLAY GALLERIES INTERNATIONAL, INC.

124 EAST 57TH STREET, NEW YORK, NY 10022 • (212) 421 5390

165 WORTH AVENUE, PALM BEACH, FL 33480 • (561) 655 2090

WWW.WALLYFINDLAY.COM



132888



UNTITLED, 1993 | 50 ^{1/4} x 64 ^{1/4} INCHES | ACRYLIC ON CANVAS

WALLY FINDLAY GALLERIES INTERNATIONAL, INC.

124 EAST 57TH STREET, NEW YORK, NY 10022 • (212) 421 5390

165 WORTH AVENUE, PALM BEACH, FL 33480 • (561) 655 2090

WWW.WALLYFINDLAY.COM



134411



UNTITLED | 30 x 38 INCHES | ACRYLIC ON CANVAS

WALLY FINDLAY GALLERIES INTERNATIONAL, INC.

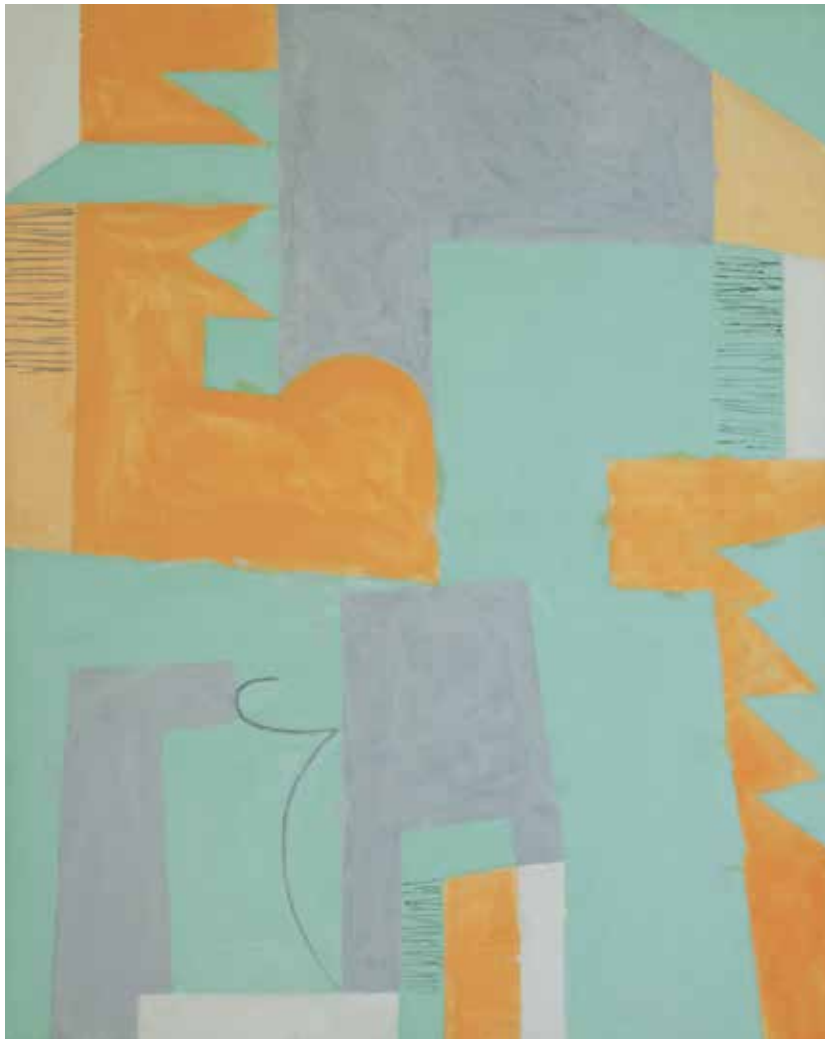
124 EAST 57TH STREET, NEW YORK, NY 10022 • (212) 421 5390

165 WORTH AVENUE, PALM BEACH, FL 33480 • (561) 655 2090

WWW.WALLYFINDLAY.COM



134419



UNTITLED, 1995 | 60 x 48 INCHES | ACRYLIC ON CANVAS

WALLY FINDLAY GALLERIES INTERNATIONAL, INC.

124 EAST 57TH STREET, NEW YORK, NY 10022 • (212) 421 5390

165 WORTH AVENUE, PALM BEACH, FL 33480 • (561) 655 2090

WWW.WALLYFINDLAY.COM



132407



UNTITLED | 48 x 60 INCHES | ACRYLIC ON CANVAS

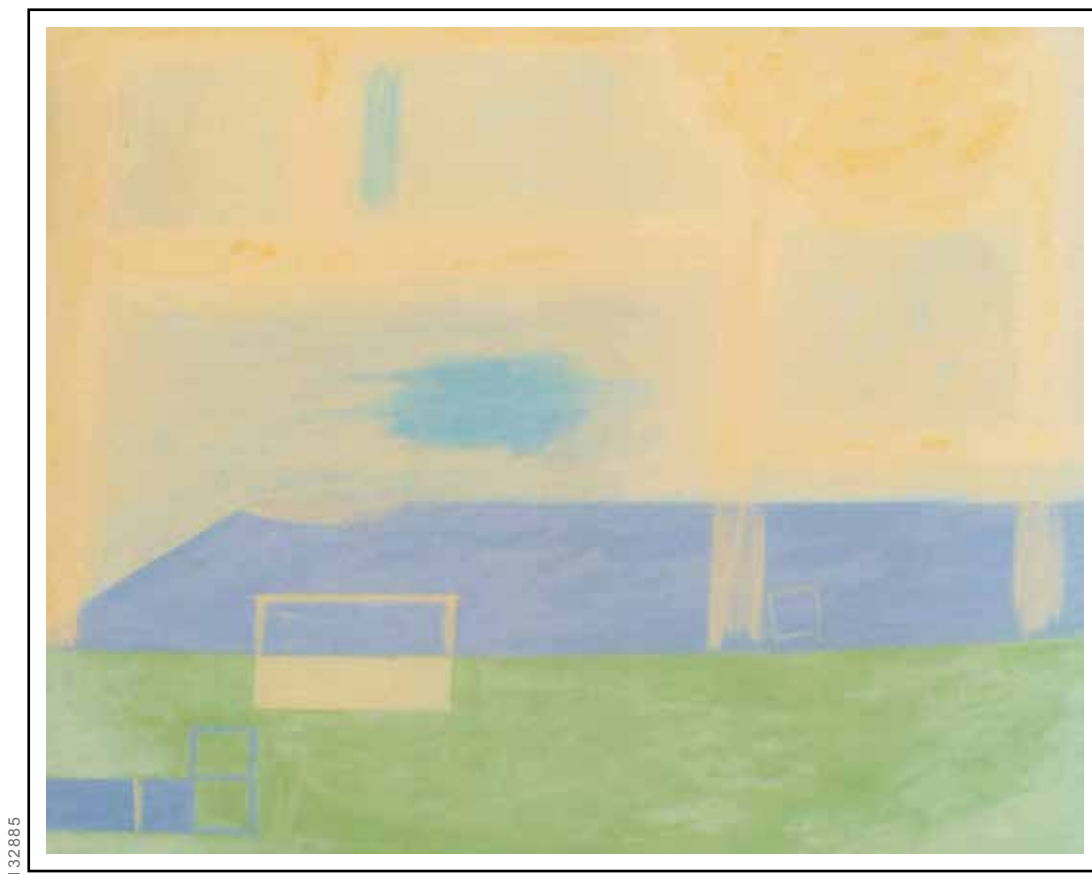
WALLY FINDLAY GALLERIES INTERNATIONAL, INC.

124 EAST 57TH STREET, NEW YORK, NY 10022 • (212) 421 5390

165 WORTH AVENUE, PALM BEACH, FL 33480 • (561) 655 2090

WWW.WALLYFINDLAY.COM





UNTITLED, 1989-1991 | 48 1/4 x 60 INCHES | ACRYLIC ON CANVAS

WALLY FINDLAY GALLERIES INTERNATIONAL, INC.

124 EAST 57TH STREET, NEW YORK, NY 10022 • (212) 421 5390

165 WORTH AVENUE, PALM BEACH, FL 33480 • (561) 655 2090

WWW.WALLYFINDLAY.COM



134475



UNTITLED, 1991 | 64 x 50 INCHES | ACRYLIC ON CANVAS

WALLY FINDLAY GALLERIES INTERNATIONAL, INC.

124 EAST 57TH STREET, NEW YORK, NY 10022 • (212) 421 5390

165 WORTH AVENUE, PALM BEACH, FL 33480 • (561) 655 2090

WWW.WALLYFINDLAY.COM



134422



UNTITLED, 1988-91 | 60 x 48 INCHES | ACRYLIC ON CANVAS

WALLY FINDLAY GALLERIES INTERNATIONAL, INC.

124 EAST 57TH STREET, NEW YORK, NY 10022 • (212) 421 5390

165 WORTH AVENUE, PALM BEACH, FL 33480 • (561) 655 2090

WWW.WALLYFINDLAY.COM



134429



UNTITLED, 1992 | 60 x 48 INCHES | ACRYLIC ON CANVAS

WALLY FINDLAY GALLERIES INTERNATIONAL, INC.

124 EAST 57TH STREET, NEW YORK, NY 10022 • (212) 421 5390

165 WORTH AVENUE, PALM BEACH, FL 33480 • (561) 655 2090

WWW.WALLYFINDLAY.COM



134424



UNTITLED, 1988-90 | 60 x 48 INCHES | ACRYLIC ON CANVAS

WALLY FINDLAY GALLERIES INTERNATIONAL, INC.

124 EAST 57TH STREET, NEW YORK, NY 10022 • (212) 421 5390

165 WORTH AVENUE, PALM BEACH, FL 33480 • (561) 655 2090

WWW.WALLYFINDLAY.COM



134423



UNTITLED, 1995 | 60 x 48 INCHES | ACRYLIC ON CANVAS

WALLY FINDLAY GALLERIES INTERNATIONAL, INC.

124 EAST 57TH STREET, NEW YORK, NY 10022 • (212) 421 5390

165 WORTH AVENUE, PALM BEACH, FL 33480 • (561) 655 2090

WWW.WALLYFINDLAY.COM



134431



UNTITLED, 1992 | 60 x 50 INCHES | ACRYLIC ON CANVAS

WALLY FINDLAY GALLERIES INTERNATIONAL, INC.

124 EAST 57TH STREET, NEW YORK, NY 10022 • (212) 421 5390

165 WORTH AVENUE, PALM BEACH, FL 33480 • (561) 655 2090

WWW.WALLYFINDLAY.COM



128142



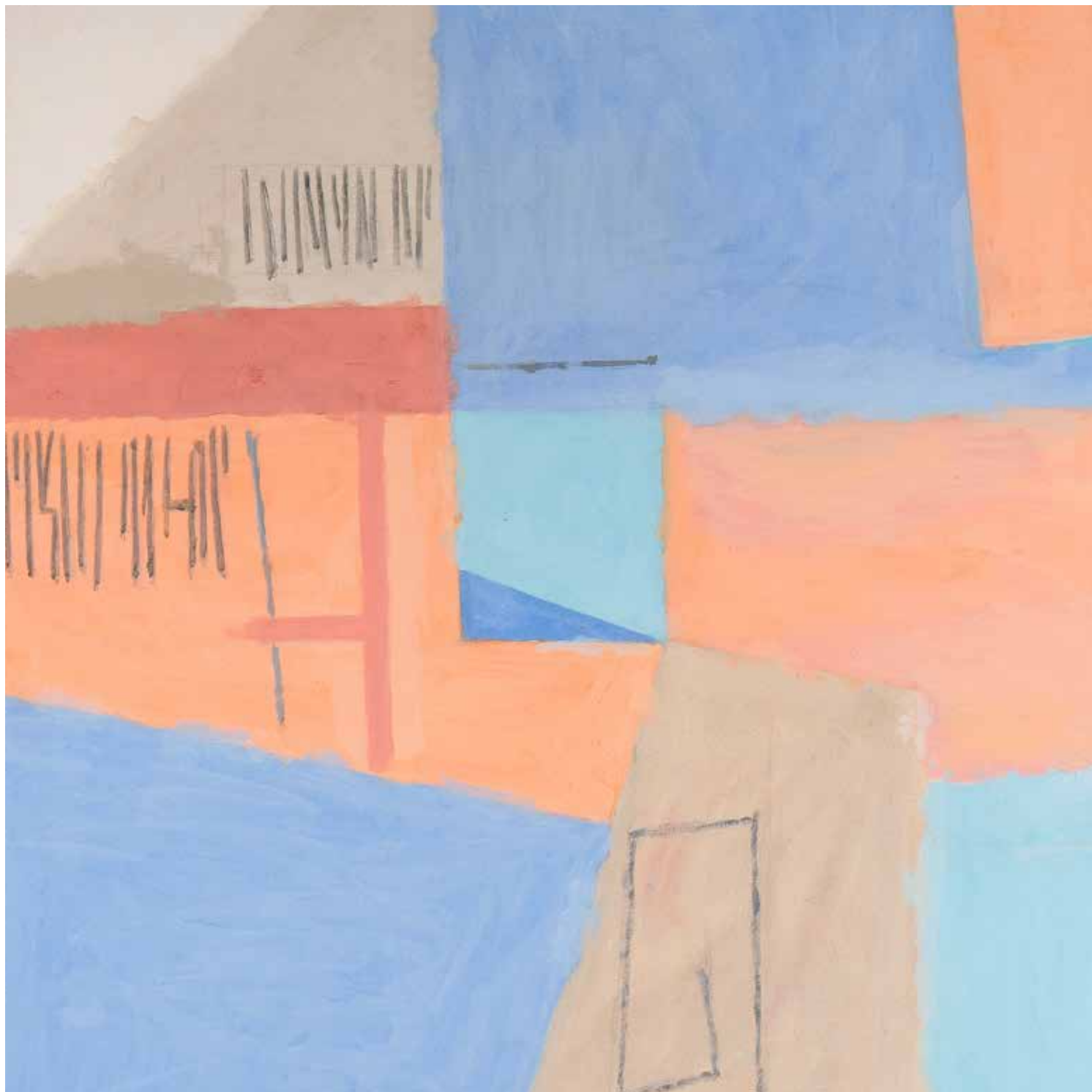
ABSTRACTION 79 | 48 x 60 INCHES | ACRYLIC ON CANVAS

WALLY FINDLAY GALLERIES INTERNATIONAL, INC.

124 EAST 57TH STREET, NEW YORK, NY 10022 • (212) 421 5390

165 WORTH AVENUE, PALM BEACH, FL 33480 • (561) 655 2090

WWW.WALLYFINDLAY.COM



134428



UNTITLED, 1992 | 60 x 48 INCHES | ACRYLIC ON CANVAS

WALLY FINDLAY GALLERIES INTERNATIONAL, INC.

124 EAST 57TH STREET, NEW YORK, NY 10022 • (212) 421 5390

165 WORTH AVENUE, PALM BEACH, FL 33480 • (561) 655 2090

WWW.WALLYFINDLAY.COM



134390



UNTITLED | 30 x 38 INCHES | ACRYLIC ON CANVAS

WALLY FINDLAY GALLERIES INTERNATIONAL, INC.

124 EAST 57TH STREET, NEW YORK, NY 10022 • (212) 421 5390

165 WORTH AVENUE, PALM BEACH, FL 33480 • (561) 655 2090

WWW.WALLYFINDLAY.COM



134412



UNTITLED | 30 x 38 INCHES | ACRYLIC ON CANVAS

WALLY FINDLAY GALLERIES INTERNATIONAL, INC.

124 EAST 57TH STREET, NEW YORK, NY 10022 • (212) 421 5390

165 WORTH AVENUE, PALM BEACH, FL 33480 • (561) 655 2090

WWW.WALLYFINDLAY.COM



134477



UNTITLED, 1993 | 64 x 50 INCHES | ACRYLIC ON CANVAS

WALLY FINDLAY GALLERIES INTERNATIONAL, INC.

124 EAST 57TH STREET, NEW YORK, NY 10022 • (212) 421 5390

165 WORTH AVENUE, PALM BEACH, FL 33480 • (561) 655 2090

WWW.WALLYFINDLAY.COM



134436



UNTITLED, 1994 | 64 x 50 INCHES | ACRYLIC ON CANVAS

WALLY FINDLAY GALLERIES INTERNATIONAL, INC.

124 EAST 57TH STREET, NEW YORK, NY 10022 • (212) 421 5390

165 WORTH AVENUE, PALM BEACH, FL 33480 • (561) 655 2090

WWW.WALLYFINDLAY.COM



134474



UNTITLED, 1993 | 64 x 50 INCHES | ACRYLIC ON CANVAS

WALLY FINDLAY GALLERIES INTERNATIONAL, INC.

124 EAST 57TH STREET, NEW YORK, NY 10022 • (212) 421 5390

165 WORTH AVENUE, PALM BEACH, FL 33480 • (561) 655 2090

WWW.WALLYFINDLAY.COM



134343



UNTITLED, 1992 | 60 x 48 INCHES | ACRYLIC ON CANVAS

WALLY FINDLAY GALLERIES INTERNATIONAL, INC.

124 EAST 57TH STREET, NEW YORK, NY 10022 • (212) 421 5390

165 WORTH AVENUE, PALM BEACH, FL 33480 • (561) 655 2090

WWW.WALLYFINDLAY.COM



134430



UNTITLED, 1992 | 60 x 48 INCHES | ACRYLIC ON CANVAS

WALLY FINDLAY GALLERIES INTERNATIONAL, INC.

124 EAST 57TH STREET, NEW YORK, NY 10022 • (212) 421 5390

165 WORTH AVENUE, PALM BEACH, FL 33480 • (561) 655 2090

WWW.WALLYFINDLAY.COM



134338



UNTITLED, 1994 | 60 x 48 INCHES | ACRYLIC ON CANVAS

WALLY FINDLAY GALLERIES INTERNATIONAL, INC.

124 EAST 57TH STREET, NEW YORK, NY 10022 • (212) 421 5390

165 WORTH AVENUE, PALM BEACH, FL 33480 • (561) 655 2090

WWW.WALLYFINDLAY.COM



134476



UNTITLED, 1992 | 64 x 50 INCHES | ACRYLIC ON CANVAS

WALLY FINDLAY GALLERIES INTERNATIONAL, INC.

124 EAST 57TH STREET, NEW YORK, NY 10022 • (212) 421 5390

165 WORTH AVENUE, PALM BEACH, FL 33480 • (561) 655 2090

WWW.WALLYFINDLAY.COM



132384



UNTITLED, 1994 | 50 x 64 INCHES | ACRYLIC ON CANVAS

WALLY FINDLAY GALLERIES INTERNATIONAL, INC.

124 EAST 57TH STREET, NEW YORK, NY 10022 • (212) 421 5390

165 WORTH AVENUE, PALM BEACH, FL 33480 • (561) 655 2090

WWW.WALLYFINDLAY.COM



128144



ABSTRACTION 84, 1995 | 48 x 60 INCHES | ACRYLIC ON CANVAS

WALLY FINDLAY GALLERIES INTERNATIONAL, INC.

124 EAST 57TH STREET, NEW YORK, NY 10022 • (212) 421 5390

165 WORTH AVENUE, PALM BEACH, FL 33480 • (561) 655 2090

WWW.WALLYFINDLAY.COM



134437



UNTITLED, 1990 | 64 x 50 INCHES | ACRYLIC ON CANVAS

WALLY FINDLAY GALLERIES INTERNATIONAL, INC.

124 EAST 57TH STREET, NEW YORK, NY 10022 • (212) 421 5390

165 WORTH AVENUE, PALM BEACH, FL 33480 • (561) 655 2090

WWW.WALLYFINDLAY.COM



132387



UNTITLED, 1991 | 50 x 64 INCHES | ACRYLIC ON CANVAS

WALLY FINDLAY GALLERIES INTERNATIONAL, INC.

124 EAST 57TH STREET, NEW YORK, NY 10022 • (212) 421 5390

165 WORTH AVENUE, PALM BEACH, FL 33480 • (561) 655 2090

WWW.WALLYFINDLAY.COM



132393



UNTITLED, 1993 | 64 x 50 INCHES | ACRYLIC ON CANVAS

WALLY FINDLAY GALLERIES INTERNATIONAL, INC.

124 EAST 57TH STREET, NEW YORK, NY 10022 • (212) 421 5390

165 WORTH AVENUE, PALM BEACH, FL 33480 • (561) 655 2090

WWW.WALLYFINDLAY.COM



132884



UNTITLED, 1994 | 50 x 64 INCHES | ACRYLIC ON CANVAS

WALLY FINDLAY GALLERIES INTERNATIONAL, INC.

124 EAST 57TH STREET, NEW YORK, NY 10022 • (212) 421 5390

165 WORTH AVENUE, PALM BEACH, FL 33480 • (561) 655 2090

WWW.WALLYFINDLAY.COM



134421



UNTITLED, 1994 | 60 x 48 INCHES | ACRYLIC ON CANVAS

WALLY FINDLAY GALLERIES INTERNATIONAL, INC.

124 EAST 57TH STREET, NEW YORK, NY 10022 • (212) 421 5390

165 WORTH AVENUE, PALM BEACH, FL 33480 • (561) 655 2090

WWW.WALLYFINDLAY.COM



134443



SUNRISE, 1991 | 64 x 50 INCHES | ACRYLIC ON CANVAS

WALLY FINDLAY GALLERIES INTERNATIONAL, INC.

124 EAST 57TH STREET, NEW YORK, NY 10022 • (212) 421 5390

165 WORTH AVENUE, PALM BEACH, FL 33480 • (561) 655 2090

WWW.WALLYFINDLAY.COM



134435



UNTITLED, 1990 | 64 x 50 INCHES | ACRYLIC ON CANVAS

WALLY FINDLAY GALLERIES INTERNATIONAL, INC.

124 EAST 57TH STREET, NEW YORK, NY 10022 • (212) 421 5390

165 WORTH AVENUE, PALM BEACH, FL 33480 • (561) 655 2090

WWW.WALLYFINDLAY.COM



FOR FURTHER INFORMATION AND PRICING OF THESE ARTWORKS
PLEASE CONTACT THE GALLERY:

NEW YORK

+ 1 (212) 421 5390

NEWYORK@WALLYFINDLAY.COM

GALLERY HOURS:

TUESDAY | SATURDAY : 10 AM | 6 PM

PALM BEACH

+ 1 (561) 655 2090

PALMBEACH@WALLYFINDLAY.COM

GALLERY HOURS:

MONDAY | SATURDAY : 10 AM | 6 PM

WALLY FINDLAY GALLERIES INTERNATIONAL, INC.

124 EAST 57TH STREET, NEW YORK, NY 10022 • (212) 421 5390

165 WORTH AVENUE, PALM BEACH, FL 33480 • (561) 655 2090

WWW.WALLYFINDLAY.COM