

The background is a complex, multi-layered collage. It features various textures and colors, including deep blues, purples, reds, and yellows. There are faint, overlapping images of architectural elements like windows and doors, as well as abstract shapes and patterns. A prominent vertical strip of purple and blue is on the left, and a large red area is on the right. The overall effect is one of depth and visual complexity.

# GORRITI

Gilles Gorriti, an avid disciple of the French Modernist movement, was born in Paris in 1939. The son of renowned artist Paul Aïzpiri, Gorriti grew up observing and learning from his father. His formal education began in 1955 at the Atelier de la Grande Chaumière, and continued at the Académie Julian in Paris.

At just seventeen, Gorriti organized his first one-man exhibition at the Galerie Morval. The following year, 1958, he became a member of the Salon d'Automne, where he would continue to exhibit throughout his career.

In 1962, he was invited to exhibit at the Salon de la Jeune Peinture. Later that year, in response to his widespread appeal and success, the city of Paris added one of his paintings to their influential collection. In 1965, his work appeared in the *Fourth International Exhibition of Figurative Art* in Japan.

Wally Findlay Galleries first exhibited the work of Gorriti in 1983 in Paris. The company's East Hampton location chose Gorriti as the artist for its Inaugural Exhibition in May of 1999.

Since then Wally Findlay Galleries has hosted exhibitions of the artist's work at their historical Chicago, Palm Beach and New York locations. Gorriti's one-man shows have received fame and success throughout the world, especially in France, Geneva, New York, Palm Beach, Los Angeles and Japan.

In addition to painting, Gorriti is an accomplished guitarist and piano player, reinforcing his belief that music and painting are intertwined. He believes that the two work together to assist in developing the creative process and often symbols of these influences can be discerned in his paintings. He is passionate about Flamenco and classical music and always has music playing while working in his atelier in Paris.

Color is of the utmost importance to Gorriti, more so than subject matter. As a colorist, Gorriti is a virtuoso in using the full range of his palette. He creates both subtle, unobtrusive fragments of delicate tones alongside vibrantly orchestrated blocks of color, which demand attention.

This striking interplay of colors is portrayed significantly and sets a stunning contrast to the generally serene subject matter, creating moods and stirring emotional responses from the viewer. His latest works highlight his genius as a colorist and as a master of texture.







©134918

*Les feuilles vertes, 2013*

76 <sup>3</sup>/<sub>4</sub> x 51 <sup>3</sup>/<sub>16</sub> inches

Oil on canvas with mixed media

WALLY FINDLAY GALLERIES INTERNATIONAL, INC.

124 EAST 57<sup>TH</sup> STREET, NEW YORK, NY 10022 • (212) 421 5390

165 WORTH AVENUE, PALM BEACH, FL 33480 • (561) 655 2090

[WWW.WALLYFINDLAY.COM](http://WWW.WALLYFINDLAY.COM)





©134920

*Fond rouge, 2013*

39 <sup>3</sup>/<sub>8</sub> x 31 <sup>7</sup>/<sub>8</sub> inches

Oil on canvas with mixed media

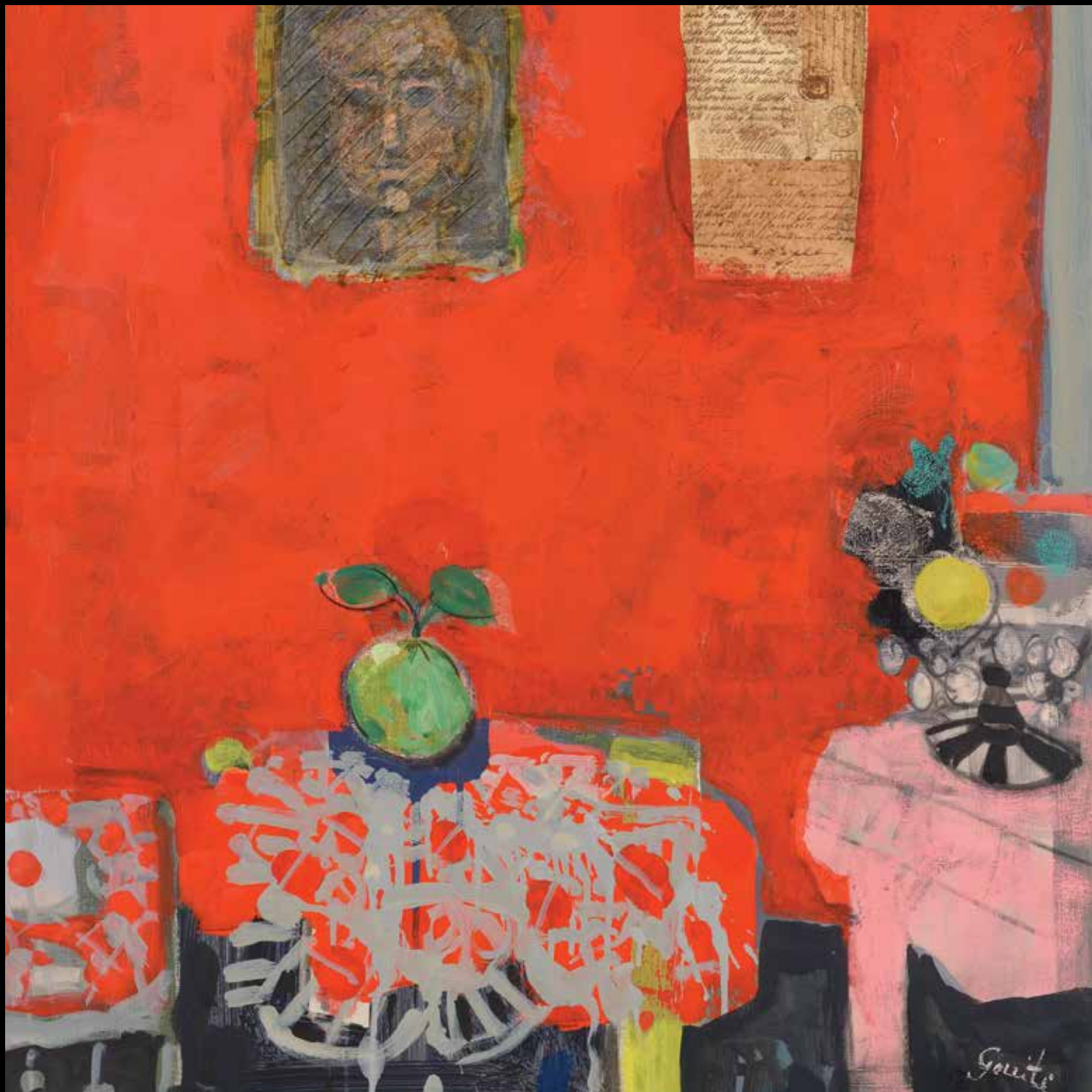
WALLY FINDLAY GALLERIES INTERNATIONAL, INC.

124 EAST 57<sup>TH</sup> STREET, NEW YORK, NY 10022 • (212) 421 5390

165 WORTH AVENUE, PALM BEACH, FL 33480 • (561) 655 2090

[WWW.WALLYFINDLAY.COM](http://WWW.WALLYFINDLAY.COM)







©134869

*La pomme verte, 2013*

39 <sup>3</sup>/<sub>8</sub> x 31 <sup>7</sup>/<sub>8</sub> inches

Oil on canvas with mixed media

WALLY FINDLAY GALLERIES INTERNATIONAL, INC.  
124 EAST 57<sup>TH</sup> STREET, NEW YORK, NY 10022 • (212) 421 5390  
165 WORTH AVENUE, PALM BEACH, FL 33480 • (561) 655 2090  
[WWW.WALLYFINDLAY.COM](http://WWW.WALLYFINDLAY.COM)









©134859

*La Partion de Musique I, 2013*

76 <sup>3</sup>/<sub>4</sub> x 51 <sup>3</sup>/<sub>16</sub> inches

Oil on canvas with mixed media

WALLY FINDLAY GALLERIES INTERNATIONAL, INC.

124 EAST 57<sup>TH</sup> STREET, NEW YORK, NY 10022 • (212) 421 5390

165 WORTH AVENUE, PALM BEACH, FL 33480 • (561) 655 2090

[WWW.WALLYFINDLAY.COM](http://WWW.WALLYFINDLAY.COM)







©134866

*La tenture a carreaux, 2013*

35 <sup>1</sup>/<sub>16</sub> x 45 <sup>11</sup>/<sub>16</sub> inches

Oil on canvas with mixed media

WALLY FINDLAY GALLERIES INTERNATIONAL, INC.

124 EAST 57<sup>TH</sup> STREET, NEW YORK, NY 10022 • (212) 421 5390

165 WORTH AVENUE, PALM BEACH, FL 33480 • (561) 655 2090

[WWW.WALLYFINDLAY.COM](http://WWW.WALLYFINDLAY.COM)







©134864

*La Plante Verte, 2013*

35 <sup>1</sup>/<sub>16</sub> x 45 <sup>11</sup>/<sub>16</sub> inches

Oil on canvas with mixed media

WALLY FINDLAY GALLERIES INTERNATIONAL, INC.

124 EAST 57<sup>TH</sup> STREET, NEW YORK, NY 10022 • (212) 421 5390

165 WORTH AVENUE, PALM BEACH, FL 33480 • (561) 655 2090

[WWW.WALLYFINDLAY.COM](http://WWW.WALLYFINDLAY.COM)







©134871

*La Partion de Musique II, 2013*

31 <sup>7</sup>/<sub>8</sub> x 39 <sup>3</sup>/<sub>8</sub> inches

Oil on canvas with mixed media

WALLY FINDLAY GALLERIES INTERNATIONAL, INC.

124 EAST 57<sup>TH</sup> STREET, NEW YORK, NY 10022 • (212) 421 5390

165 WORTH AVENUE, PALM BEACH, FL 33480 • (561) 655 2090

[WWW.WALLYFINDLAY.COM](http://WWW.WALLYFINDLAY.COM)







©134919

*L'assiette aux fruits, 2013*

36 <sup>1</sup>/<sub>4</sub> x 28 <sup>3</sup>/<sub>4</sub> inches

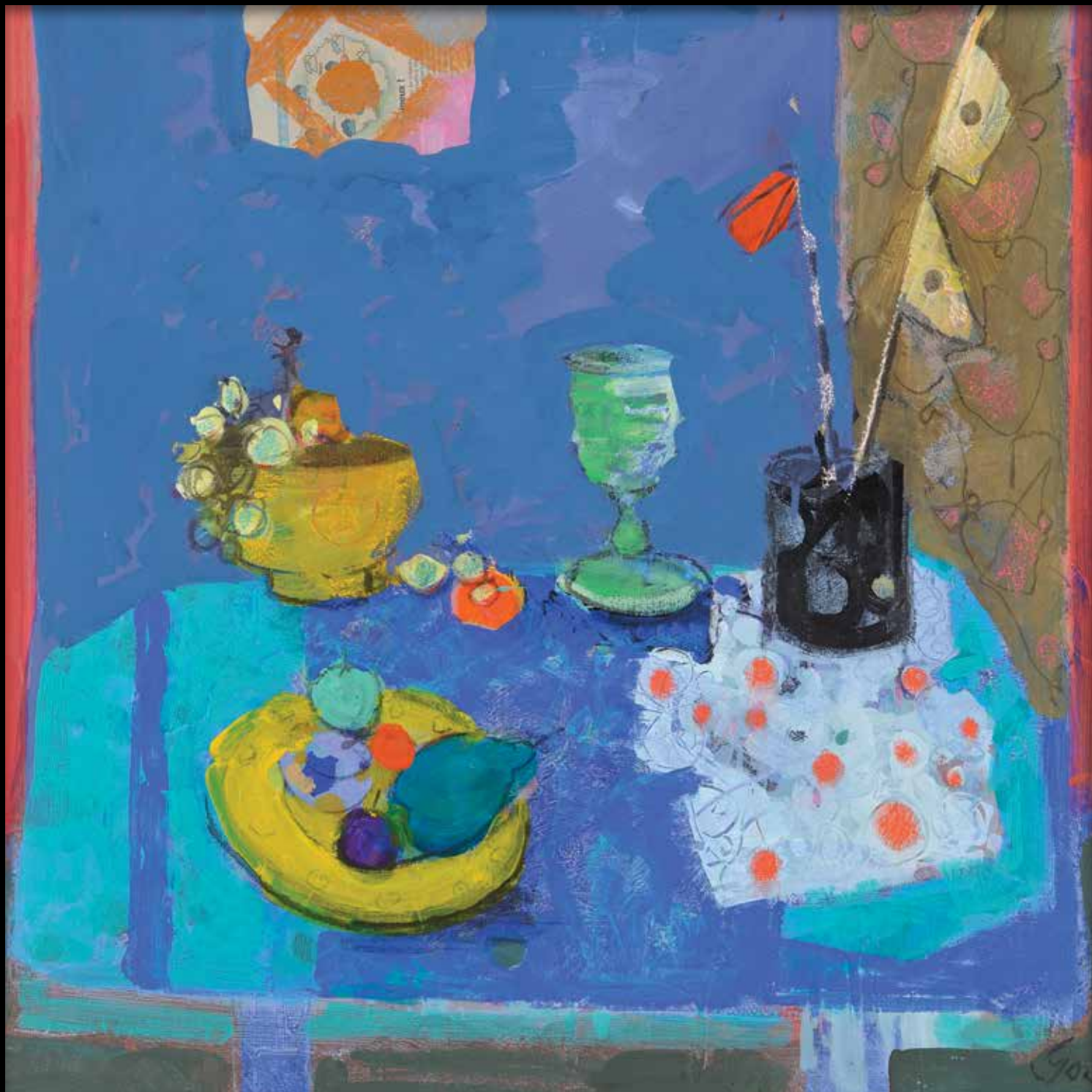
Oil on canvas with mixed media

WALLY FINDLAY GALLERIES INTERNATIONAL, INC.

124 EAST 57<sup>TH</sup> STREET, NEW YORK, NY 10022 • (212) 421 5390

165 WORTH AVENUE, PALM BEACH, FL 33480 • (561) 655 2090

[WWW.WALLYFINDLAY.COM](http://WWW.WALLYFINDLAY.COM)







©134929

*Deux Roses, 2013*

39 <sup>1</sup>/<sub>8</sub> x 53 inches, (triptych)  
Oil on canvas with mixed media

WALLY FINDLAY GALLERIES INTERNATIONAL, INC.  
124 EAST 57<sup>TH</sup> STREET, NEW YORK, NY 10022 • (212) 421 5390  
165 WORTH AVENUE, PALM BEACH, FL 33480 • (561) 655 2090  
[WWW.WALLYFINDLAY.COM](http://WWW.WALLYFINDLAY.COM)







©134921

*L'etagere, 2013*

45 <sup>11</sup>/<sub>16</sub> x 35 <sup>1</sup>/<sub>16</sub> inches

Oil on canvas with mixed media

WALLY FINDLAY GALLERIES INTERNATIONAL, INC.

124 EAST 57<sup>TH</sup> STREET, NEW YORK, NY 10022 • (212) 421 5390

165 WORTH AVENUE, PALM BEACH, FL 33480 • (561) 655 2090

[WWW.WALLYFINDLAY.COM](http://WWW.WALLYFINDLAY.COM)







©134865

*L'éventail II, 2011*

39 <sup>3</sup>/<sub>8</sub> x 31 <sup>7</sup>/<sub>8</sub> inches

Oil on canvas with mixed media

WALLY FINDLAY GALLERIES INTERNATIONAL, INC.

124 EAST 57<sup>TH</sup> STREET, NEW YORK, NY 10022 • (212) 421 5390

165 WORTH AVENUE, PALM BEACH, FL 33480 • (561) 655 2090

[WWW.WALLYFINDLAY.COM](http://WWW.WALLYFINDLAY.COM)



Gonzi





©134870

*Le pot noir, 2012*

31 <sup>7</sup>/<sub>8</sub> x 39 <sup>3</sup>/<sub>8</sub> inches

Oil on canvas with mixed media

WALLY FINDLAY GALLERIES INTERNATIONAL, INC.

124 EAST 57<sup>TH</sup> STREET, NEW YORK, NY 10022 • (212) 421 5390

165 WORTH AVENUE, PALM BEACH, FL 33480 • (561) 655 2090

[WWW.WALLYFINDLAY.COM](http://WWW.WALLYFINDLAY.COM)







134872

*Les deux pommes, 2012*

36 <sup>1</sup>/<sub>4</sub> x 28 <sup>3</sup>/<sub>4</sub> inches

Oil on canvas with mixed media

WALLY FINDLAY GALLERIES INTERNATIONAL, INC.

124 EAST 57<sup>TH</sup> STREET, NEW YORK, NY 10022 • (212) 421 5390

165 WORTH AVENUE, PALM BEACH, FL 33480 • (561) 655 2090

[WWW.WALLYFINDLAY.COM](http://WWW.WALLYFINDLAY.COM)







©134926

*Nature morte à la nappe rouge, 2013*

51 <sup>3</sup>/<sub>16</sub> x 63 <sup>3</sup>/<sub>4</sub> inches

Oil on canvas with mixed media

WALLY FINDLAY GALLERIES INTERNATIONAL, INC.

124 EAST 57<sup>TH</sup> STREET, NEW YORK, NY 10022 • (212) 421 5390

165 WORTH AVENUE, PALM BEACH, FL 33480 • (561) 655 2090

[WWW.WALLYFINDLAY.COM](http://WWW.WALLYFINDLAY.COM)







©134927

*Le piano noir, 2013*

51 <sup>3</sup>/<sub>16</sub> x 63 <sup>3</sup>/<sub>4</sub> inches

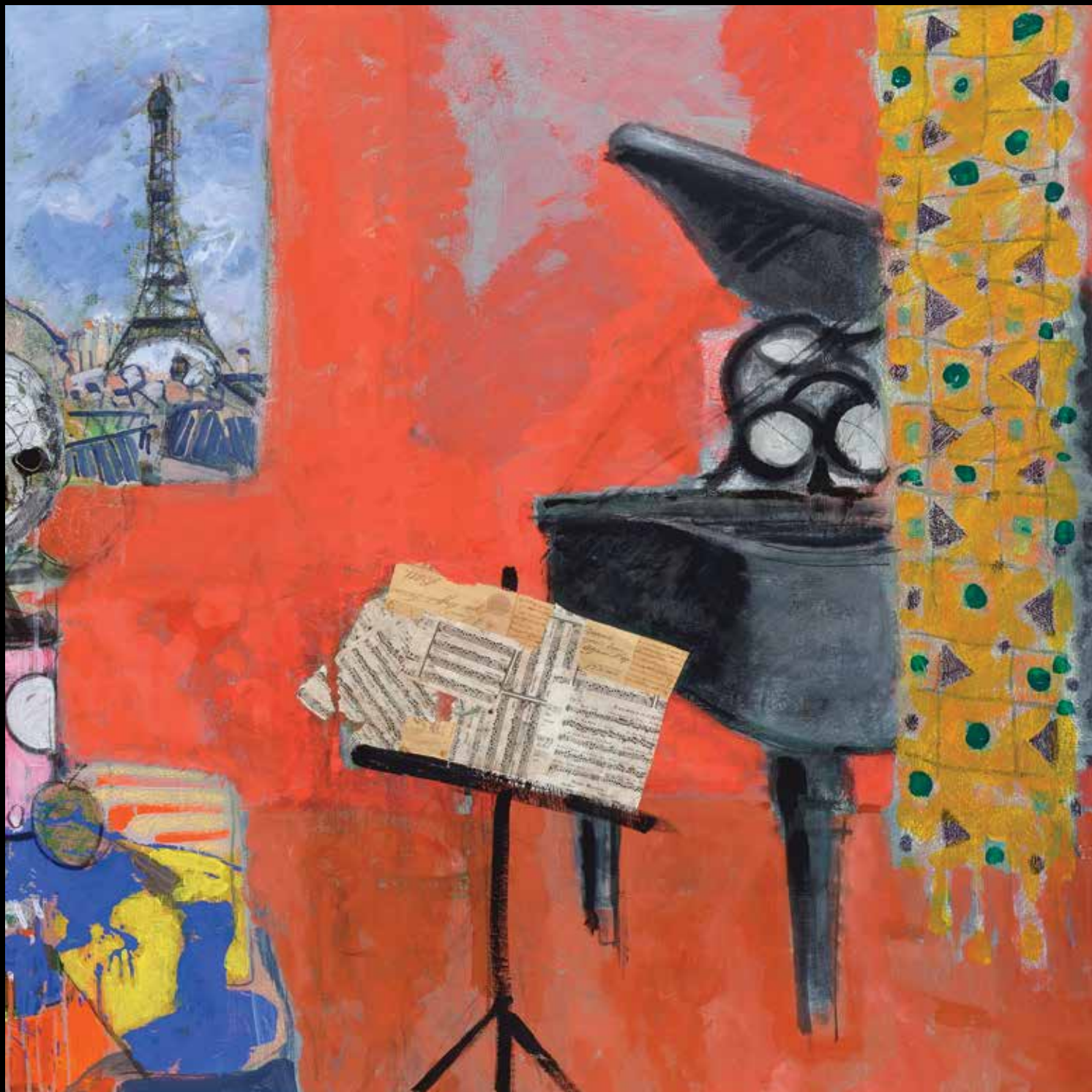
Oil on canvas with mixed media

WALLY FINDLAY GALLERIES INTERNATIONAL, INC.

124 EAST 57<sup>TH</sup> STREET, NEW YORK, NY 10022 • (212) 421 5390

165 WORTH AVENUE, PALM BEACH, FL 33480 • (561) 655 2090

[WWW.WALLYFINDLAY.COM](http://WWW.WALLYFINDLAY.COM)







©134924

*La plante verte II*

51 <sup>3/16</sup> x 76 <sup>3/4</sup> inches

Oil on canvas with mixed media

WALLY FINDLAY GALLERIES INTERNATIONAL, INC.

124 EAST 57<sup>TH</sup> STREET, NEW YORK, NY 10022 • (212) 421 5390

165 WORTH AVENUE, PALM BEACH, FL 33480 • (561) 655 2090

WWW.WALLYFINDLAY.COM







©134923

*La petit cheval, 2013*

35 <sup>1</sup>/<sub>16</sub> x 45 <sup>11</sup>/<sub>16</sub> inches

Oil on canvas with mixed media

WALLY FINDLAY GALLERIES INTERNATIONAL, INC.

124 EAST 57<sup>TH</sup> STREET, NEW YORK, NY 10022 • (212) 421 5390

165 WORTH AVENUE, PALM BEACH, FL 33480 • (561) 655 2090

[WWW.WALLYFINDLAY.COM](http://WWW.WALLYFINDLAY.COM)







©134861

*Les tentures Indiennes, 2012*

35 <sup>1</sup>/<sub>16</sub> x 45 <sup>11</sup>/<sub>16</sub> inches

Oil on canvas with mixed media

WALLY FINDLAY GALLERIES INTERNATIONAL, INC.

124 EAST 57<sup>TH</sup> STREET, NEW YORK, NY 10022 • (212) 421 5390

165 WORTH AVENUE, PALM BEACH, FL 33480 • (561) 655 2090

[WWW.WALLYFINDLAY.COM](http://WWW.WALLYFINDLAY.COM)







©134860

*New York, 2013*

51 <sup>3</sup>/<sub>16</sub> x 38 <sup>3</sup>/<sub>16</sub> inches

Oil on canvas with mixed media

WALLY FINDLAY GALLERIES INTERNATIONAL, INC.

124 EAST 57<sup>TH</sup> STREET, NEW YORK, NY 10022 • (212) 421 5390

165 WORTH AVENUE, PALM BEACH, FL 33480 • (561) 655 2090

[WWW.WALLYFINDLAY.COM](http://WWW.WALLYFINDLAY.COM)







©134862

*Passage Vivienne, 2011*

35 <sup>1</sup>/<sub>16</sub> x 45 <sup>11</sup>/<sub>16</sub> inches

Oil on canvas with mixed media

WALLY FINDLAY GALLERIES INTERNATIONAL, INC.

124 EAST 57<sup>TH</sup> STREET, NEW YORK, NY 10022 • (212) 421 5390

165 WORTH AVENUE, PALM BEACH, FL 33480 • (561) 655 2090

[WWW.WALLYFINDLAY.COM](http://WWW.WALLYFINDLAY.COM)







©134922

*New York II, 2013*  
45 <sup>11/16</sup> x 35 <sup>1/16</sup> inches  
Oil on canvas with mixed media

WALLY FINDLAY GALLERIES INTERNATIONAL, INC.  
124 EAST 57<sup>TH</sup> STREET, NEW YORK, NY 10022 • (212) 421 5390  
165 WORTH AVENUE, PALM BEACH, FL 33480 • (561) 655 2090  
[WWW.WALLYFINDLAY.COM](http://WWW.WALLYFINDLAY.COM)







©134868

*La Japonaierie, 2012*

39 <sup>3</sup>/<sub>8</sub> x 31 <sup>7</sup>/<sub>8</sub> inches

Oil on canvas with mixed media

WALLY FINDLAY GALLERIES INTERNATIONAL, INC.  
124 EAST 57<sup>TH</sup> STREET, NEW YORK, NY 10022 • (212) 421 5390  
165 WORTH AVENUE, PALM BEACH, FL 33480 • (561) 655 2090  
[WWW.WALLYFINDLAY.COM](http://WWW.WALLYFINDLAY.COM)





# Gilles Gorriti

- 1939** Born in Paris
- 1955** Enrolled to study design and painting at l'Atelier de la Grand Chaumière and at l'Académie Julian
- 1956** First solo exhibition, Gallery Norval
- 1957** Becomes a member of Salon d'Automne
- 1958** Exhibition, Gallery Pédrîdès, Paris  
Exhibition, Salon d'Automne, Salon de la Jeune Peinture, Paris
- 1962** City of Paris acquires Gorriti's work
- 1965** Exhibition, *Art Figuratif International*, Tokyo
- 1967** Exhibition, Gallery Hakuho, Osaka  
Exhibition, Gallery Romanet, Paris
- 1970** Exhibition, Japan  
Exhibition, Gallery Jourmet, Cannes  
Exhibition, Monte-Carlo
- 1978** Exhibition, *European Contemporary Master*, Tokyo  
Exhibition, Gallery Tamenaga, Tokyo, Osaka
- 1979** Exhibition, Salon d'Automne  
Exhibition, *Art Figuratif International*, Tokyo
- 1980** Exhibition, Hilde Gerst Gallery, New York, Palm Beach  
Numerous editions of lithographs for Vision Nouvelle, Japan, U.S.A.  
Private Collection U.S.A., France, Japan
- 1982** Exhibition, Gallery Nichido, Tokyo
- 1983** Exhibition, Wally Findlay Galleries, Paris
- 1984** Exhibition, Wally Findlay Galleries, Chicago  
Exhibition, Gallery Nichido, Tokyo
- 1985** Exhibition, Wally Findlay Galleries, Palm Beach  
Exhibition, Gallery Longchamp, Nice
- 1986** Exhibition, Wally Findlay Galleries, New York  
Exhibition, Gallery Vision Nouvelle
- 1987** Exhibition, Wally Findlay Galleries, Paris  
Exhibition, Gallery Couleur du Temps, Geneva
- 1988** Exhibition, Gallery Vision Nouvelle, Tokyo
- 1989** Exhibition, Gallery Couleur du Temps, Geneva  
Exhibition, Gallery Flora Janssen, Paris
- 1990** Exhibition, Gallery l'Ami des Lettres, Bordeaux  
Exhibition, Gallery Longchamps, Nice
- 1991** Exhibition, Gallery Vision Nouvelle, Paris
- 1992** Exhibition, Gallery Salvany, Clermont-Ferrand  
Exhibition, Gallery Couleurs du temps, Geneva  
Exhibition, Gallery Guerstein-Montimer, Biarritz
- 1994** Exhibition, Gallery Moyon-Avenar, Nantes
- 1995** Exhibition, Gallery Saint-Hubert, Lyon  
Exhibition, Gallery Franck Elbaz, Paris
- 1996** Exhibition, Shimose Fine Art, Tokyo  
Exhibition, Printemps Ginza, Tokyo
- 1997** Exhibition, Gantois, Cannes
- 1998** Exhibition, Wally Findlay Galleries, Chicago  
Exhibition, Gallery Tamenaga, Paris  
Exhibition, Mitsukoshi, Tokyo  
Exhibition, Gallery Shimose Fine Art, Tokyo  
Exhibition, Matsuzakaya, Nagoya
- 1999** Exhibition, Wally Findlay Galleries, Chicago  
Exhibition, Tenmany, Okayama  
Exhibition, Tenmany, Hiroshima
- 2000** Exhibition, Wally Findlay Galleries, Palm Beach
- 2001** Exhibition, Gallery Tamenaga, Paris  
Exhibition, Wally Findlay Galleries, New York
- 2002** Exhibition, Wally Findlay Galleries, New York  
Exhibition, Gallery Saint-Hubert, Lyon
- 2004** Exhibition, *French Interpretations*, Wally Findlay Galleries, Palm Beach  
Exhibition, Wally Findlay Galleries, New York
- 2005** Exhibition, Gallery Tamenaga, Paris
- 2006** Exhibition, Gallery Saint-Hubert, Lyon
- 2008** Exhibition, Gallery Saint-Hubert, Lyon  
Exhibition, Gallery Cimaïse et du Theatre, Besançon
- 2010** Exhibition, Mitsukoshi, Tokyo  
Exhibition, Wally Findlay Galleries, New York  
Exhibition, Wally Findlay Galleries, Palm Beach
- 2012** Exhibition, Musée de Guethary, Guethary
- 2013** *30th Anniversary Exhibition*, Wally Findlay Galleries, New York

The background is a complex, multi-layered abstract collage. It features various textures, colors, and shapes. Notable elements include a large, vibrant red shape in the upper right, a vertical purple band on the left, and a grid-like pattern in the upper right. There are also smaller, more detailed elements like a figure in a purple outfit and a book titled 'LE JOURNAL DE' visible within the collage.

For additional information and pricing  
please contact the gallery

New York 212.421.5390  
Palm Beach 561.655.2090

WALLY FINDLAY GALLERIES INTERNATIONAL, INC.  
124 EAST 57<sup>TH</sup> STREET, NEW YORK, NY 10022 • (212) 421 5390  
165 WORTH AVENUE, PALM BEACH, FL 33480 • (561) 655 2090  
[WWW.WALLYFINDLAY.COM](http://WWW.WALLYFINDLAY.COM)