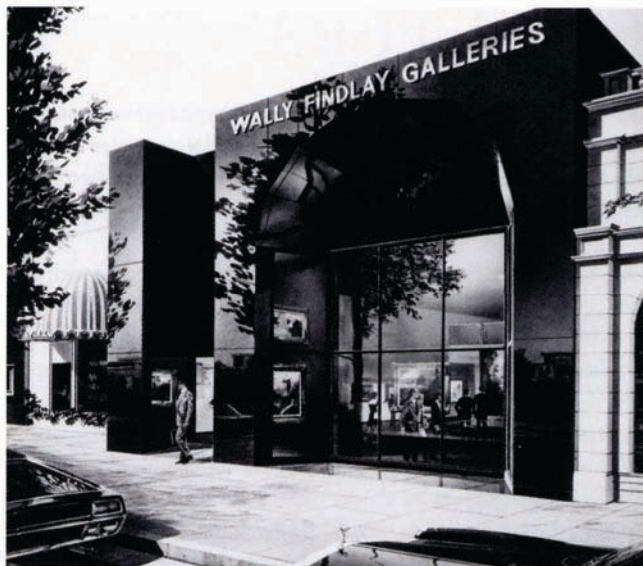




# RETURN TO LOS ANGELES



THE WALLY FINDLAY GALLERIES have had a presence on the west coast's art scene since Wally Findlay himself began presenting traveling exhibitions at the Beverly Hills Hotel in the 1950s. And in December of last year, the galleries officially returned with the opening of a new gallery in Los Angeles, located at 461 North Robertson Boulevard in West Hollywood.

"Returning to Los Angeles offers our established and new clientele on the west coast a gallery that enables them access to comprehensive exhibitions and our full range of services, says Wally Findlay Galleries International Chairman and C.E.O. James Borynack.

The new gallery celebrated its opening in February with the "Connoisseurs Collection" exhibition, featuring "exceptional works from our collection of Impressionist and Modern Masters, with highlights from our distinctive stable of contemporary

*This page, top: The new Wally Findlay Galleries in Los Angeles. Bottom: A rendering of the Beverly Hills gallery that was on Rodeo Drive, circa 1976.*



artists," Borynack says. Works by Van Gogh, Picasso, and Wyeth were presented, and the evening honored the National Hospice Foundation. More than 250 art collectors, curators, journalists, and prominent social figures came out to celebrate in the new 4,000-square-foot gallery. In the seven salons, spread out across one floor, the gallery expects to simultaneously show multiple exhibitions of contemporary works as well as rotating exhibitions of Impressionist and Modern Masters throughout the year.

Wally Findlay Galleries first expanded to Chicago in 1930, then grew throughout the twentieth century, opening galleries in Palm Beach, New York, Beverly Hills, Paris, Tokyo, East Hampton, London, and Barcelona. "Not all of the locations are operational, but the legacy continues with a distinctive heritage," Borynack says. Each of the galleries represents renowned contemporary artists and builds collections for the city's individual, institutional, and corporate collectors alike. Wally Findlay's new gallery in Los Angeles will also help the company forge new relationships with contemporary west coast-based artists.

For those who missed the "Connoisseurs Collection," this month opens with an important exhibition of paintings by Lluís Ribas, which debuted in the Barcelona gallery in conjunction with the Museu de Sant Cugat. And from April through the summer months, Angelenos can look forward to exhibitions of the galleries' highly-collected contemporary artists: Gilles Gorriti, Charles Neal, Mary Sipp-Green, and Nicola Simbari. Each exhibition will feature the extraordinary artists Wally Findlay is famous for. ♦



*Top to bottom: Adolfo Zaralegui, Fred Clark, Stephanie Borynack, and James R. Borynack at the opening reception; Views inside the new gallery.*

